

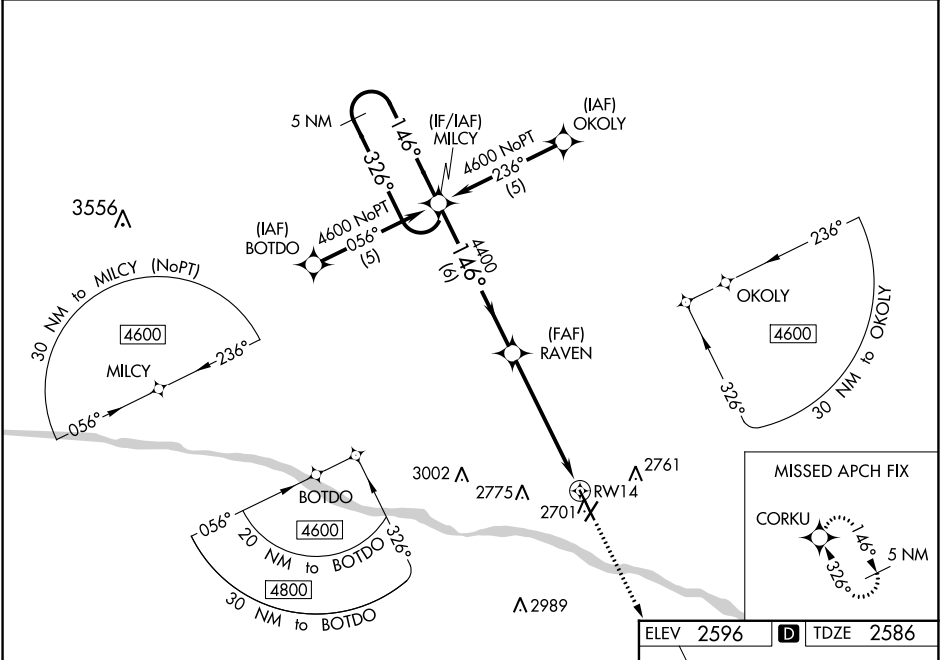
WAAS CH 65609 W14A	APP CRS 146°	Rwy Idg TDZE Apt Elev	6329 2586 2596
--	------------------------	-----------------------------	---

RNAV (GPS) RWY 14

DODGE CITY RGNL (DDC)

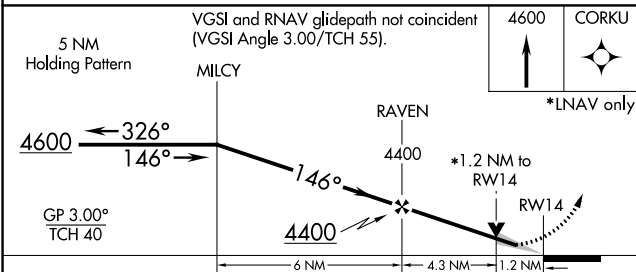
⚠ DME/DME RNP-0.3 NA. For uncompensated Baro-VNAV systems, LNAV/VNAV NA below -19°C (-2°F) or above 54°C (130°F). For inop ALS, increase LPV all Cats visibility to 7/8 SM and LNAV/VNAV all Cats visibility to 1 3/8 SM.	MALSR 	MISSED APPROACH: Climb to 4600 direct CORKU and hold.
--	-----------	---

ASOS 118.525	KANSAS CITY CENTER 125.2 285.425	UNICOM 122.7 (CTAF) 0
------------------------	--	---------------------------------



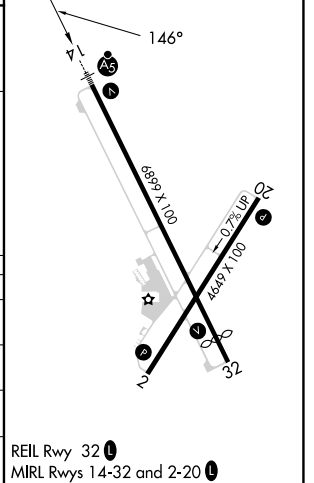
NC-2, 28 NOV 2024 to 26 DEC 2024

NC-2, 28 NOV 2024 to 26 DEC 2024



ELEV 2596	D TDZE 2586
-----------	--------------------

CATEGORY	A	B	C	D
LPV DA		2836-1/2	250 (300-1/2)	
LNAV/VNAV DA		2991-1	405 (400-1)	
LNAV MDA	3020-1/2	434 (500-1/2)	3020-3/4	434 (500-3/4)
C CIRCLING	3040-1 444 (500-1)	3080-1 484 (500-1)	3320-2 724 (800-2)	3320-2 1/4 724 (800-2 1/4)



REIL Rwy 32 **0**
MIRL Rwy 14-32 and 2-20 **0**