

# RNAV (GPS) RWY 23

WAAS Chan <b>56203</b> <b>W23A</b>	APCH CRS <b>225°</b>	Rwy ldg <b>10,926</b> TDZE <b>571</b> Arprt Elev <b>571</b>
--	-------------------------	---

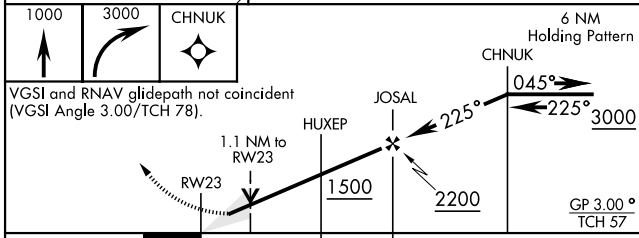
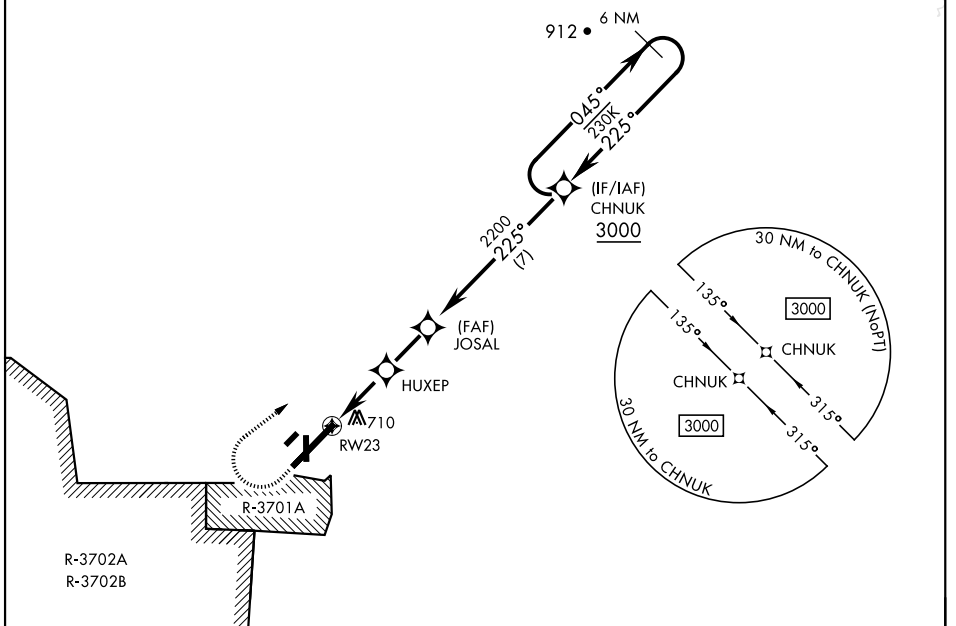
[USA]

CAMPBELL AAF (KHOP)

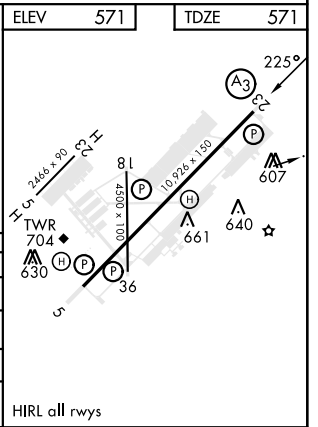
RNP APCH - GPS	SSALR (A3)	MISSED APPROACH: Climb to 1000 then climbing right turn to 3000 direct CHNUK and hold.
<p>▼ * When ALS inop, increase RVR to 40, vis to 3/4 mile.                  ** When ALS inop, increase RVR to 55, vis to 1 mile.                  *** When ALS inop, increase CAT AB RVR to 55, vis to 1 mile, CAT CDE RVR to 60, vis to 1 1/2 miles.                  **** Circling NA SE of Rwy 5-23.</p>		

ATIS <b>125.175 308.4</b>	APP CON <b>118.1 269.525</b>	TOWER <b>120.9 278.8</b>	GND CON <b>121.8 266.8</b>	CLNC DEL <b>138.8</b>	ASR/PAR
------------------------------	---------------------------------	-----------------------------	-------------------------------	--------------------------	---------

For uncompensated BARO-VNAV systems, LNAV/VNAV NA below -19°C (-2°F) or above 54°C (130°F).



CATEGORY	A	B	C	D	E
LPV DA *	771/24		200	(200-1/2)	
LNAV/VNAV DA **	949/35		378	(400-3/4)	
LNAV MDA ***	960/24	389 (400-1/2)	960/35		389 (400-3/4)
CIRCLING ****	1060-1	489 (500-1)	1060-1 1/2	1140-2	569 (600-2)



# RNAV (GPS) RWY 23

SE-1, 28 NOV 2024 to 26 DEC 2024

SE-1, 28 NOV 2024 to 26 DEC 2024