

TACAN RWY 23

TACAN HXW Chan 96	APCH CRS 228°	Rwy Idg 10,926 TDZE 571 Arprt Elev 571
-----------------------------	-------------------------	---

[USA]

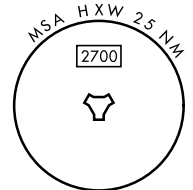
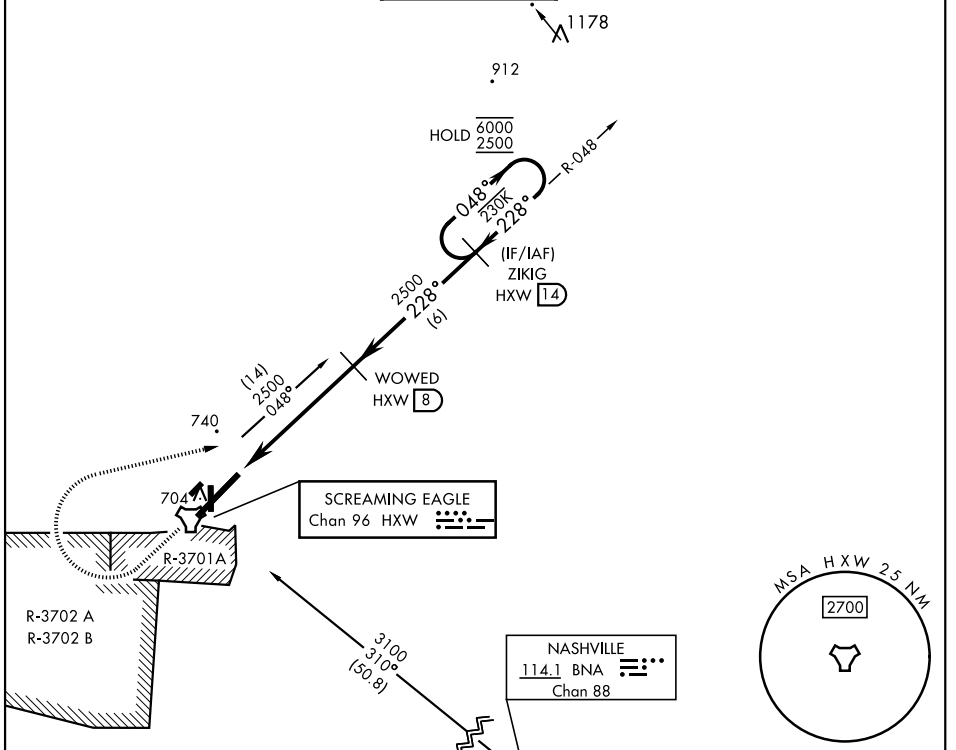
CAMPBELL AAF (KHOP)

▼ * When ALS inop, increase CAT AB RVR to 55, vis to 1 mile; CAT CDE vis to 1 3/8 mile.
 ** Circling not authorized SE of Rwy 5-23.

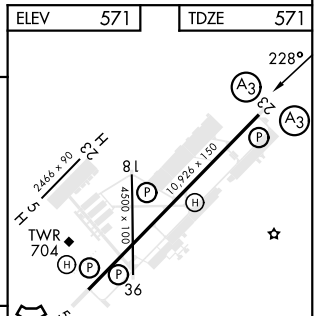
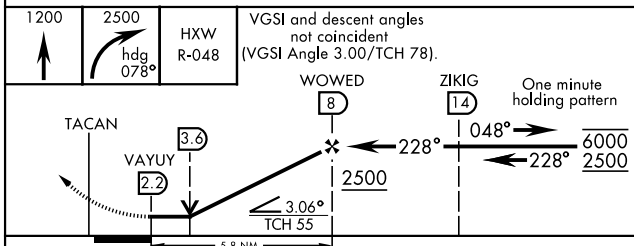
SSALR
 (A3)

MISSED APPROACH: Climb to 1200 then climbing right turn to 2500 on hdg 078° and HXW TACAN R-048 to ZIKIG/HXW 14 DME and hold.

ATIS 125.175 308.4	APP CON 118.1 269.525	TOWER 120.9 278.8	GND CON 121.8 266.8	CLNC DEL 138.8	ASR/PAR
------------------------------	---------------------------------	-----------------------------	-------------------------------	--------------------------	---------



ELEV	571	TDZE	571
------	-----	------	-----



CATEGORY	A	B	C	D	E
S-23 *	1080/24 509 (600-3/4)		1080/55 509 (600-1 1/4)		
CIRCLING **	1080-1 509 (600-1)		1080-1 1/2 509 (600-1 1/2)	1140-2 569 (600-2)	

HIRL all rwys

TACAN RWY 23

SE-1, 28 NOV 2024 to 26 DEC 2024

SE-1, 28 NOV 2024 to 26 DEC 2024