

LOC/DME I-PVU <b>110.3</b> Chan <b>40</b>	APP CRS <b>134°</b>	Rwy Idg <b>8599</b> TDZE <b>4497</b> Apt Elev <b>4497</b>
---	------------------------	---

# ILS or LOC RWY 13

PROVO MUNI (PVU)

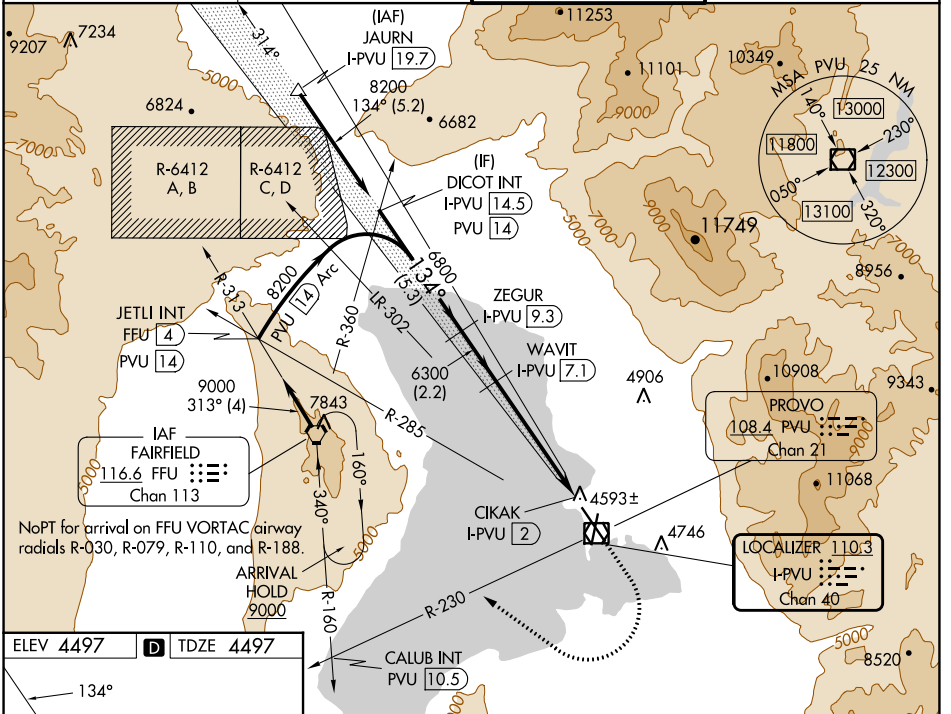
DME required.

**⚠** Circling NA east of Rwy 18-36. Circling Rwy 18, 36 NA at night.

**⚠** Rwy 13 helicopter visibility reduction below 3/4 SM NA. When local altimeter setting not received, procedure NA.

MISSED APPROACH: Climb to 6200 then climbing right turn to 9000 on heading 301° and on PVU VOR/DME R-230 to CALUB INT/PVU 10.5 DME then right turn on FFU VORTAC R-160 to FFU VORTAC and hold.

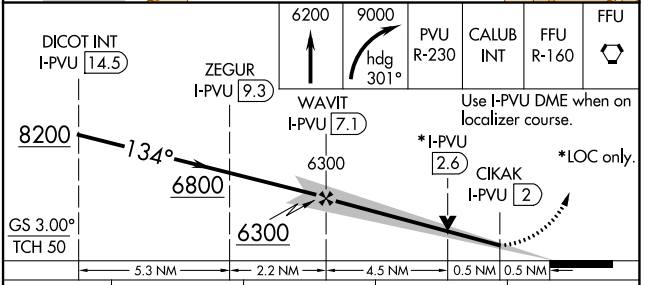
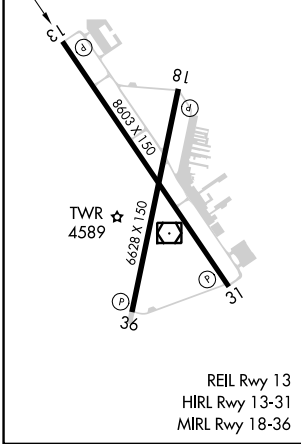
ATIS* <b>135.175</b>	SALT LAKE CITY APP CON <b>118.85 233.7</b>	PROVO TOWER* <b>125.3 (CTAF)</b>	GND CON <b>119.4</b>
-------------------------	---	-------------------------------------	-------------------------



SW-4, 28 NOV 2024 to 26 DEC 2024

SW-4, 28 NOV 2024 to 26 DEC 2024

ELEV 4497	<b>D</b>	TDZE 4497
-----------	----------	-----------



CATEGORY	A	B	C	D
S-ILS 13	4756-3/4 259 (300-3/4)			
S-LOC 13	4860-1 363 (400-1)			
<b>C</b> CIRCLING	4920-1 423 (500-1)	4980-1 483 (500-1)	5140-1 3/4 643 (700-1 3/4)	5280-2 1/2 783 (800-2 1/2)