

WAAS CH <b>97307</b> <b>W13A</b>	APP CRS <b>134°</b>	Rwy Idg TDZE Apt Elev	<b>8599</b> <b>4497</b> <b>4497</b>
--	------------------------	-----------------------------	---

# RNAV (GPS) RWY 13

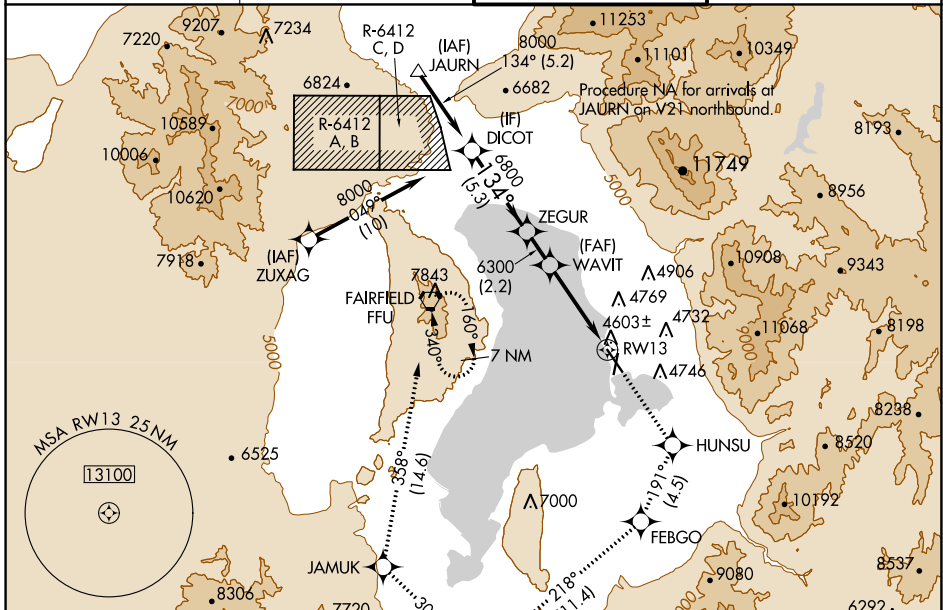
PROVO MUNI (PVU)

RNP APCH - GPS.

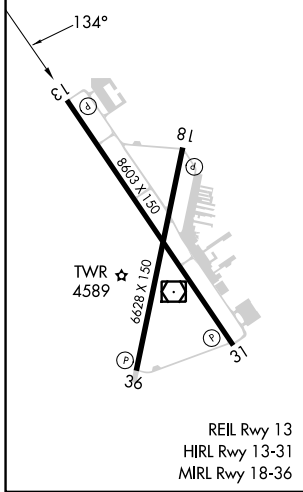
⚠ Circling NA east of Rwy 18-36. Circling Rwy 18, 36 NA at night.  
 ⚠ Rwy 13 helicopter visibility reduction below 3/4 SM NA. For uncompensated Baro-VNAV systems, LNAV/VNAV NA below -23°C or above 54°C. When local altimeter setting not received, procedure NA.

MISSED APPROACH: Climb to 9000 direct HUNSU and on track 191° to FEBGO and on track 218° to ZARAK and on track 302° to JAMUK and on track 358° to FFU VORTAC and hold.

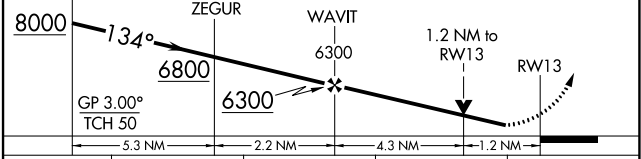
ATIS ★ <b>135.175</b>	SALT LAKE CITY APP CON <b>118.85 233.7</b>	PROVO TOWER ★ <b>125.3 (CTAF)</b>	GND CON <b>119.4</b>
--------------------------	---	--------------------------------------	-------------------------



ELEV 4497	<b>D</b>	TDZE 4497
-----------	----------	-----------



9000 HUNSU	FEBGO	ZARAK	JAMUK	FFU
DICOT	tr 191°	tr 218°	tr 302°	tr 358°



CATEGORY	A	B	C	D
LPV DA	4756-3/4 259 (300-3/4)			
LNAV/VNAV DA	4838-1 341 (400-1)			
LNAV MDA	4940-1	443 (500-1)	4940-1 3/8	443 (500-1 3/8)
<b>C</b> CIRCLING	4940-1 443 (500-1)	4980-1 483 (500-1)	5140-1 3/4 643 (700-1 3/4)	5280-2 1/2 783 (800-2 1/2)

SW-4, 28 NOV 2024 to 26 DEC 2024

SW-4, 28 NOV 2024 to 26 DEC 2024