

WAAS CH 90233 W13A	APP CRS 134°	Rwy Idg TDZE Apt Elev	6200 5046 5096
--	------------------------	-----------------------------	---

RNAV (GPS) RWY 13

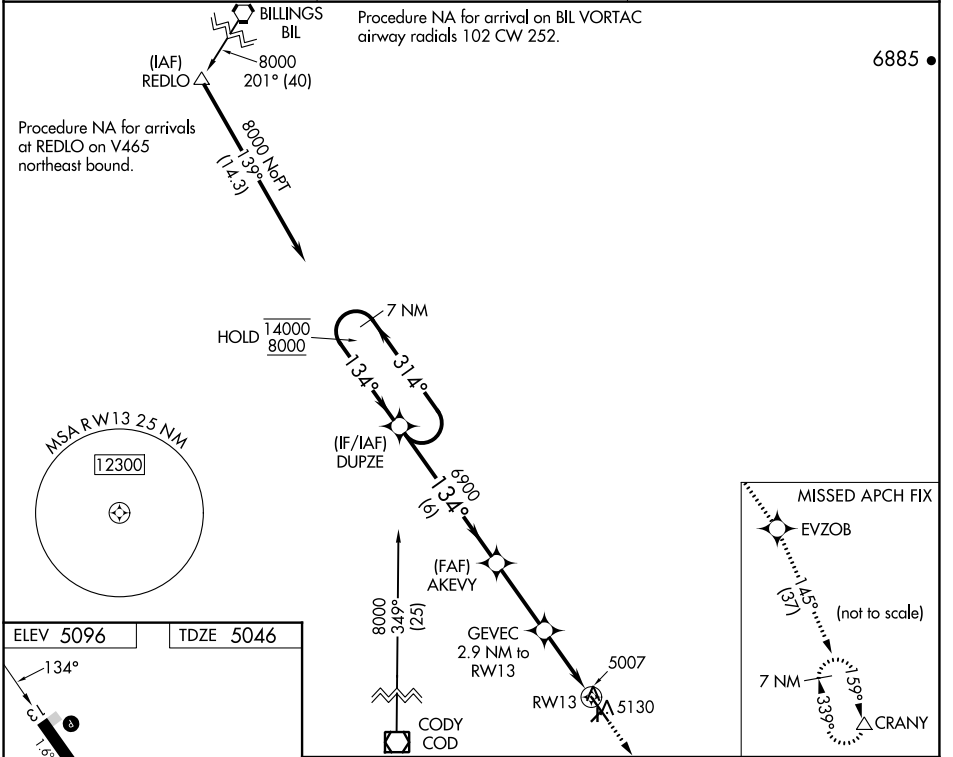
POWELL MUNI (POY)

RNP APCH.

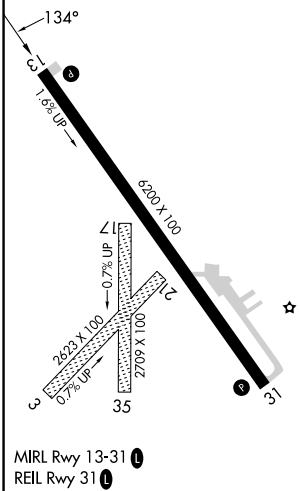
NA Circling NA to Rwys 3, 17, 21 and 35. For uncompensated Baro-VNAV systems, LNAV/VNAV NA below -25°C or above 51°C. Baro-VNAV and VDP NA when using Cody altimeter setting. When local altimeter setting not received, use Cody altimeter setting and increase all DA 54 feet and all MDA 60 feet.

MISSED APPROACH: Climb to 8500 direct EVZOB and on track 145° to CRANY and hold.

AWOS-3 119.275	SALT LAKE CENTER 127.75 351.9	UNICOM 122.7 (CTAF) 0
--------------------------	---	---------------------------------



ELEV 5096	TDZE 5046
-----------	-----------



7 NM Holding Pattern	DUPZE	AKEVY	8500	EVZOB	tr 145°	CRANY
14000	8000	6900	6900	GEVEC 2.9 NM to RW13	*LNAV only	
GP 3.00°	TCH 38	*5940	6 NM	3 NM	2.2 NM	0.7
CATEGORY	A	B	C	D		
LPV DA	5296-1		250 (200-1)			
LNAV/VNAV DA	5296-1		250 (200-1)			
LNAV MDA	5300-1		254 (300-1)			
CIRCLING	5500-1 404 (500-1)	5560-1 464 (500-1)	5560-1½ 464 (500-1½)	5660-2 564 (600-2)		

NW-1, 28 NOV 2024 to 26 DEC 2024

NW-1, 28 NOV 2024 to 26 DEC 2024