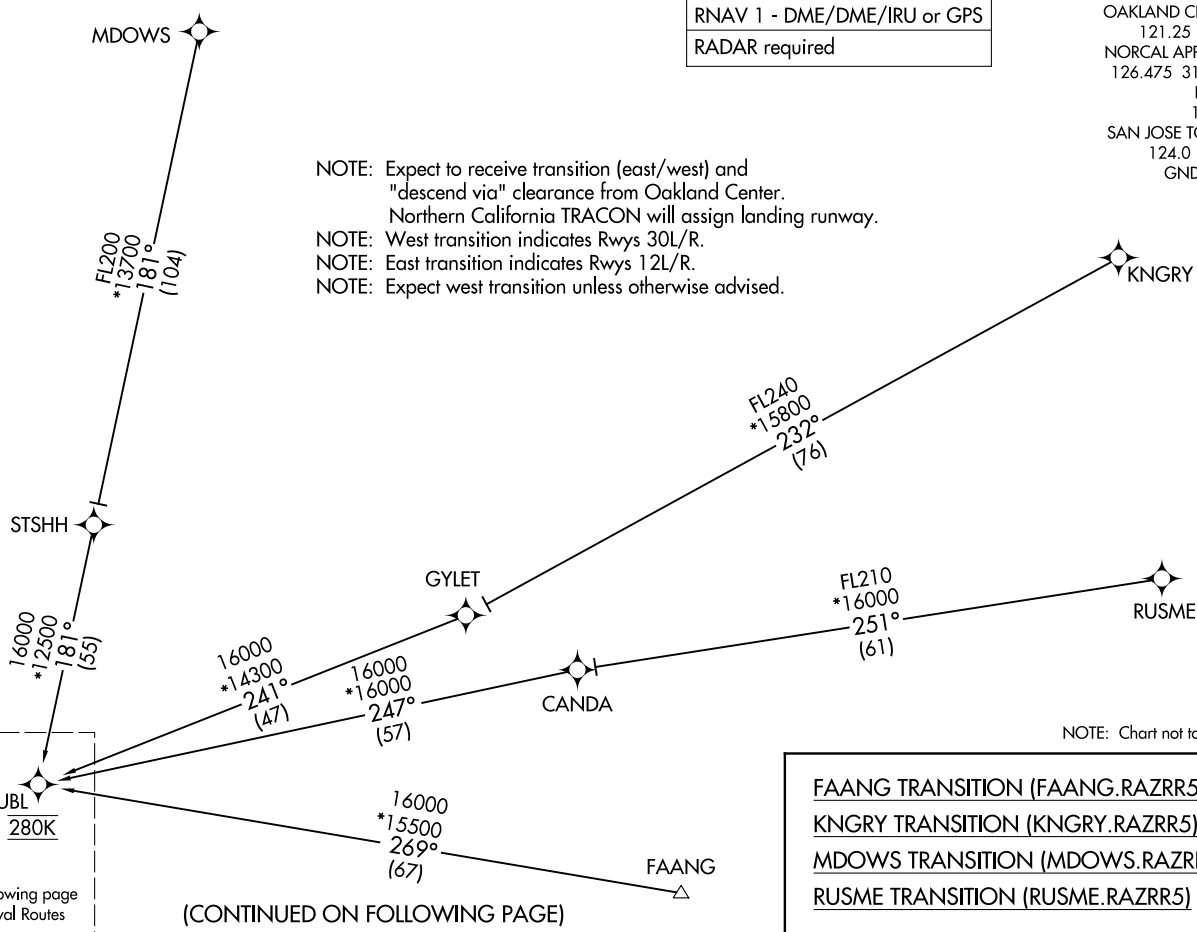


RNAV 1 - DME/DME/IRU or GPS  
RADAR required

OAKLAND CENTER  
121.25 327.0  
NORCAL APP CON  
126.475 317.775  
D-ATIS  
126.95  
SAN JOSE TOWER\*  
124.0 257.6  
GND CON  
121.7

NOTE: Expect to receive transition (east/west) and "descend via" clearance from Oakland Center. Northern California TRACON will assign landing runway.  
NOTE: West transition indicates Rwy's 30L/R.  
NOTE: East transition indicates Rwy's 12L/R.  
NOTE: Expect west transition unless otherwise advised.

(STUBL.RAZRR5) 22195  
AL-693 (FAA) NORMAN Y MINETA SAN JOSE INTL (SJC)  
SAN JOSE, CALIFORNIA  
RAZRR FIVE ARRIVAL (RNAV) Transition Routes



NOTE: Chart not to scale.

FAANG TRANSITION (FAANG.RAZRR5)  
KNGRY TRANSITION (KNGRY.RAZRR5)  
MDOWS TRANSITION (MDOWS.RAZRR5)  
RUSME TRANSITION (RUSME.RAZRR5)

(CONTINUED ON FOLLOWING PAGE)

RAZRR FIVE ARRIVAL (RNAV) Transition Routes  
SAN JOSE, CALIFORNIA  
NORMAN Y MINETA SAN JOSE INTL (SJC)  
(STUBL.RAZRR5) 144U122

RAZRR FIVE ARRIVAL (RNAV) (STUBL, RAZRR5) 140U22  
 SAN JOSE, CALIFORNIA  
 NORMAN Y MINETA SAN JOSE INTL (SJC)

(STUBL, RAZRR5) 22195  
 RAZRR FIVE ARRIVAL (RNAV) Arrival Routes  
 AL-693 (FAA)  
 NORMAN Y MINETA SAN JOSE INTL (SJC)  
 SAN JOSE, CALIFORNIA

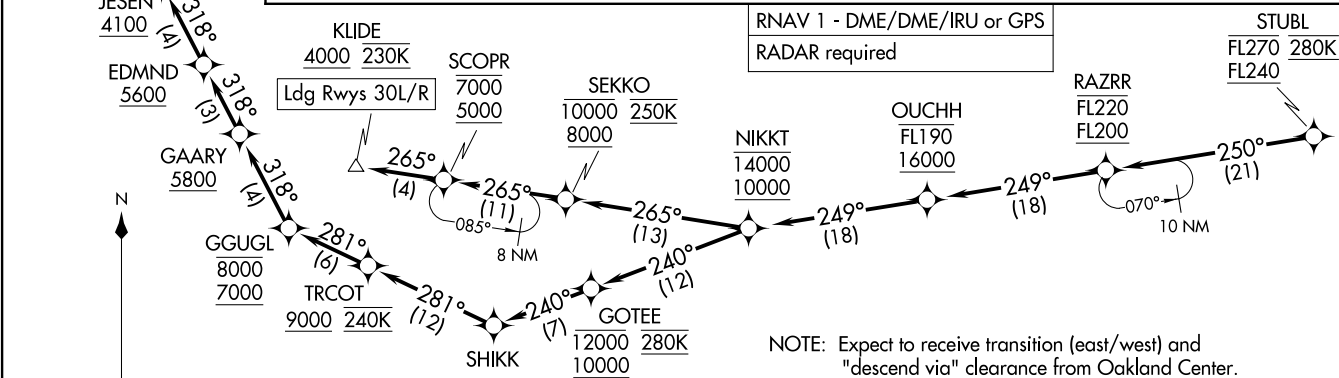
### ARRIVAL ROUTE DESCRIPTION

From STUBL on track 250° to cross RAZRR between FL200 and FL220, then on track 249° to cross OUCHH between 16000 and FL190, then on track 249° to cross NIKKT between 10000 and 14000.

EAST TRANSITION LANDING RUNWAYS 12L/R: From NIKKT on track 240° to cross GOTEE between 10000 and 12000 and at 280K, then on track 240° to SHIKK, then on track 281° to cross TRCOT at or above 9000 and at 240K, then on track 281° to cross GGUGL between 7000 and 8000, then on track 318° to cross GAARY at or above 5800, then on track 318° to cross EDMND at or above 5600, then on track 318° to cross JESEN at or above 4100, then on track 306° to cross HITIR at 4000. Expect RADAR vectors to final approach course.

WEST TRANSITION LANDING RUNWAYS 30L/R: From NIKKT on track 265° to cross SEKKO between 8000 and 10000 and at 250K, then on track 265° to cross SCOPR between 5000 and 7000, then on track 265° to cross KLIDE at or above 4000 and at 230K. Expect assigned instrument approach or RADAR vectors to final approach course.

OAKLAND CENTER  
 121.25 327.0  
 NORCAL APP CON  
 126.475 317.775  
 D-ATIS  
 126.95  
 SAN JOSE TOWER\*  
 124.0 257.6  
 GND CON  
 121.7



RNAV 1 - DME/DME/IRU or GPS  
 RADAR required

- NOTE: Expect to receive transition (east/west) and "descend via" clearance from Oakland Center. Northern California TRACON will assign landing runway.
- NOTE: West transition indicates Rwy's 30L/R.
- NOTE: East transition indicates Rwy's 12L/R.
- NOTE: Expect west transition unless otherwise advised.

NOTE: Chart not to scale.