

WAAS CH 90106 W12A	APP CRS 126°	Rwy ldg TDZE Apt Elev	12R 8587 46 62	12L 8831 44 62
--	------------------------	-----------------------------	--	--

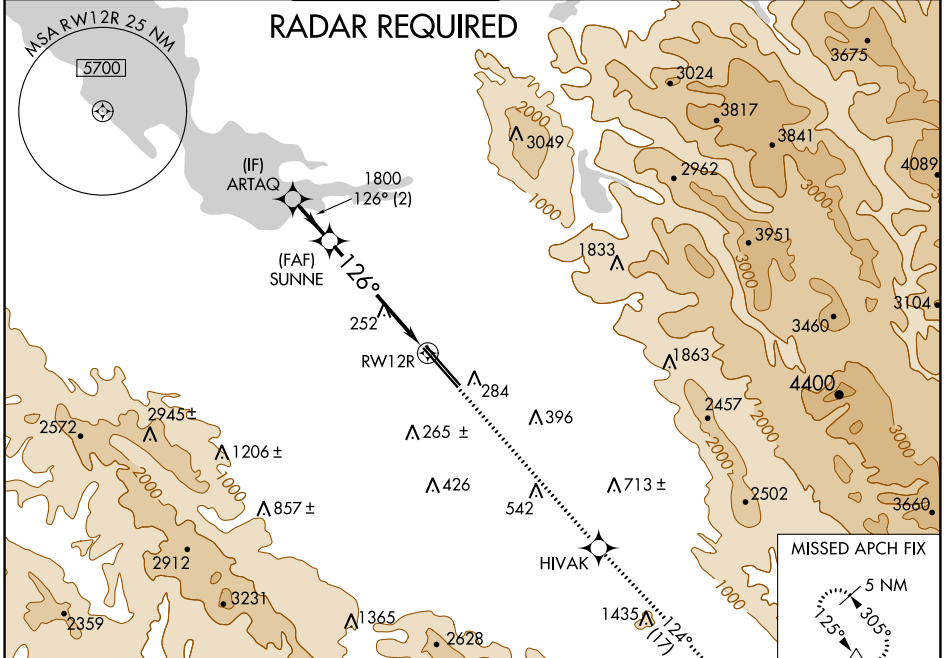
RNAV (GPS) Y RWY 12R

NORMAN Y MINETA SAN JOSE INTL (SJC)

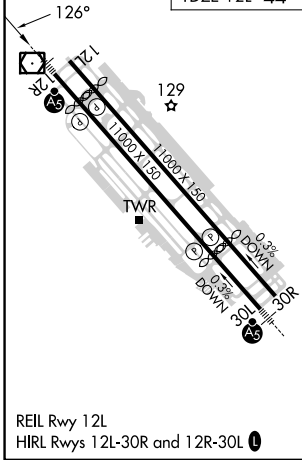
For uncompensated Baro-VNAV systems, LNAV/VNAV NA below -1°C (31°F) or above 54°C (130°F). DME/DME RNP-0.3 NA. For inoperative MALSR, increase LNAV/VNAV all Cats visibility to 1 mile and LNAV Cats C/D visibility to 1 3/8 mile.

MALSR Rwy 12R
MISSED APPROACH: Climb to 4600 direct HIVAK and on track 124° to GILRO and hold.

D-ATIS 126.95	NORCAL APP CON 120.1 290.25	SAN JOSE TOWER * 124.0 (CTAF) 0 257.6	GND CON 121.7	CLNC DEL 118.0	CPDLC	UNICOM 122.95
-------------------------	---------------------------------------	---	-------------------------	--------------------------	-------	-------------------------



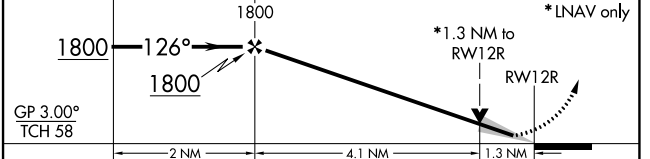
ELEV 62	D TDZE 12R 46 TDZE 12L 44
---------	-------------------------------------



VGSI and RNAV glidepath not coincident (VGSI Angle 3.00/TCH 75).

4600	HIVAK	tr 124°	GILRO
------	-------	---------	-------

*LNAV only



GP 3.00° TCH 58	ARTAQ	SUNNE	1800	1800	1800
CATEGORY	A	B	C	D	
LPV DA	246-1/2		200 (200-1/2)		
LNAV/VNAV DA	371-5/8 325 (400-5/8)		371-1 325 (400-1)		
LNAV MDA	520-1/2 474 (500-1/2)		520-1 474 (500-1)		
SIDESTEP 12L	520-1 476 (500-1)		520-1 1/2 476 (500-1 1/2)		520-2 476 (500-2)

SW-2, 28 NOV 2024 to 26 DEC 2024

SW-2, 28 NOV 2024 to 26 DEC 2024