

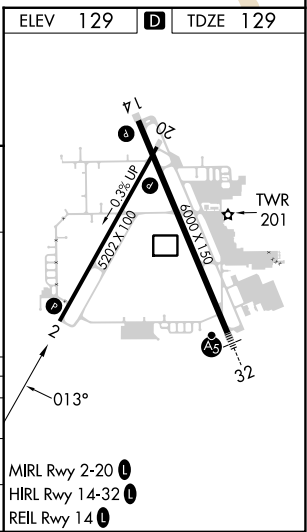
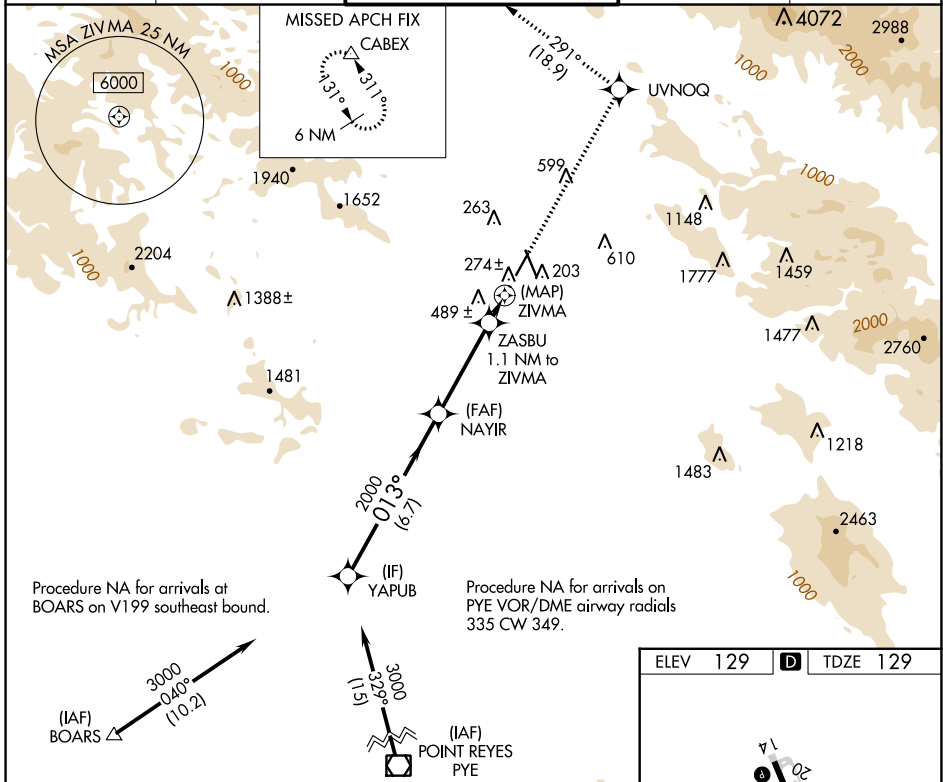
WAAS CH 69230 W02A	APP CRS 013°	Rwy Idg TDZE 129 Apt Elev 129	4802
--	------------------------	---	-------------

RNAV (GPS) RWY 2

CHARLES M SCHULZ/SONOMA COUNTY (STS)

RNP APCH.	MISSED APPROACH: Climb to 6000 direct UVNOQ and on track 291° to CABEX and hold, continue climb-in-hold to 6000.
▼ ▲ Rwy 2 helicopter visibility reduction below ¾ SM NA.	

ATIS 120.55	OAKLAND CENTER 127.8 353.5	SANTA ROSA TOWER* 118.5 (CTAF) 0 363.0	GND CON 121.9	UNICOM 122.95
-----------------------	--------------------------------------	--	-------------------------	-------------------------



VGSI and descent angles not coincident (VGSI Angle 3.00/TCH 50).

YAPUB	NAYIR	ZASBU	ZIVMA	UVNOQ	CABEX
3000	2000	800		tr 291°	△
013°	3.00° TCH 45				
6.7 NM	3.7 NM	1.1 NM	0.9 NM		
500-1	371 (400-1)	660-1½	531 (600-1½)		
660-1	531 (600-1)	660-1½	531 (600-1½)		
660-1	680-1	1080-3	1420-3		
531 (600-1)	551 (600-1)	951 (1000-3)	1291 (1300-3)		

SW-2, 28 NOV 2024 to 26 DEC 2024

SW-2, 28 NOV 2024 to 26 DEC 2024