

LOC/DME I-UKI	APP CRS	Rwy Idg	4423
109.1	155°	TDZE	617
Chan 28		Apt Elev	617

LOC RWY 15

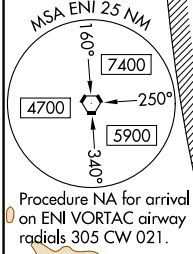
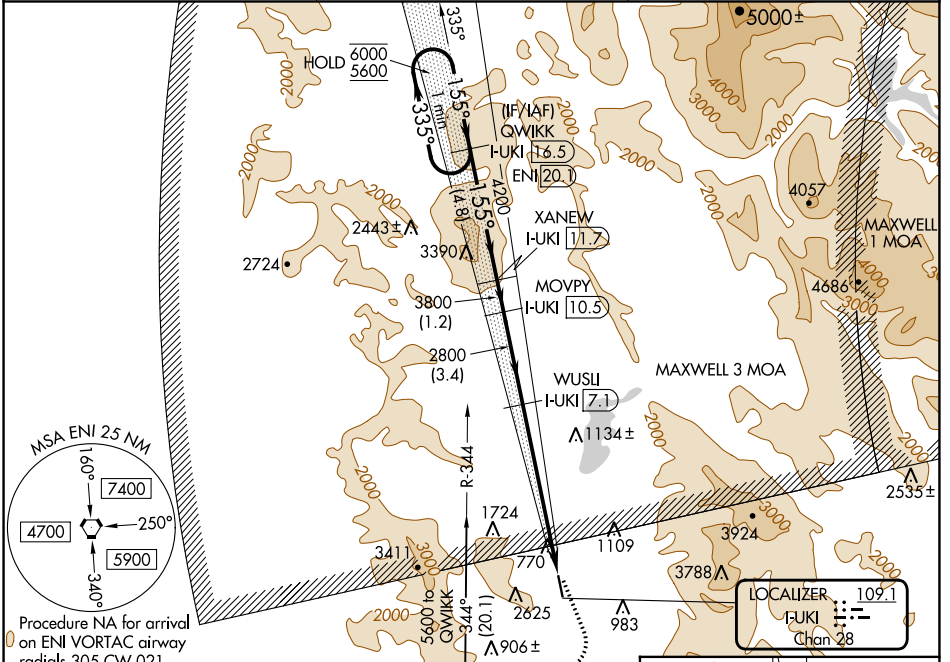
UKIAH MUNI (UKI)

DME required.

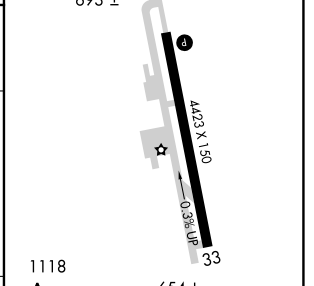
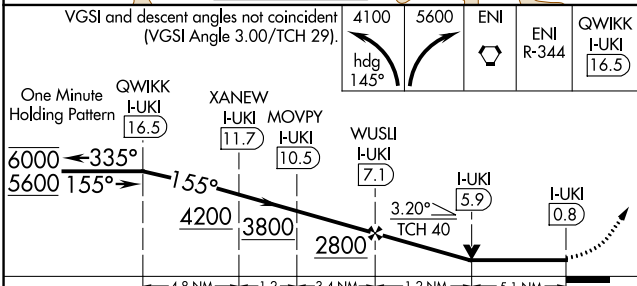
▼ Circling NA southwest of Rwy 15-33. Circling Rwy 33 NA at night. Rwy 15 helicopter visibility reduction below 3/4 SM NA. When local altimeter setting not received, procedure NA.

▲ MISSED APPROACH: Climbing left turn to 4100 on heading 145° then climbing right turn to 5600 direct ENI VORTAC and on ENI VORTAC R-344 to QWIKK /I-UKI 16.5 DME and hold.

ASOS 119.275	OAKLAND CENTER 127.8 353.5	UNICOM 123.0 (CTAF) 0
------------------------	--------------------------------------	---------------------------------



ELEV 617	TDZE 617
	155°



CATEGORY	A	B	C	D
S-LOC 15	2300-1¼ 1683 (1700-1¼)	2300-1½ 1683 (1700-1½)	2300-3 1683 (1700-3)	1683 (1700-3)
C CIRCLING	2300-1¼ 1683 (1700-1¼)	2300-1½ 1683 (1700-1½)	2300-3 1683 (1700-3)	2780-3 2163 (2200-3)

MIRL Rwy 15-33	REIL Rws 15 and 33	FAF to MAP 6.3 NM
Knots	60 90 120 150 180	
Min:Sec	6:18 4:12 3:09 2:31 2:06	

SW-2, 28 NOV 2024 to 26 DEC 2024

SW-2, 28 NOV 2024 to 26 DEC 2024