

VALPARAISO, FLORIDA

RNAV (GPS) Z RWY 18

APCH CRS	Rwy Idg	8025
184°	TDZE	191
	Arprt Elev	195

AL-699 (USAF)

DUKE FIELD (EGLIN AF AUX NR 3) (KEGI)

RNP APCH

ALSf-1

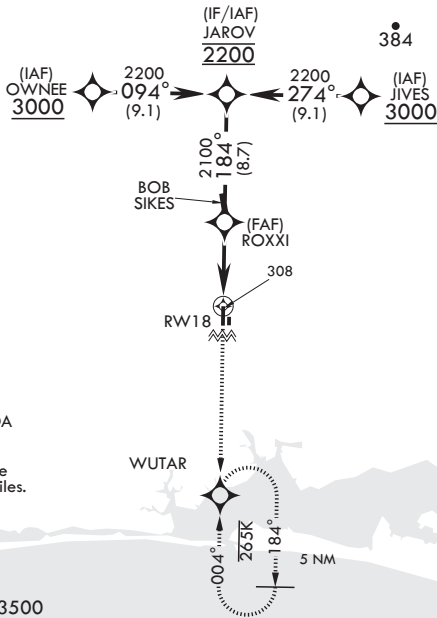
MISSED APPROACH: Climb to 3000 direct WUTAR and hold.

* When ALS inop, increase RVR to 40, vis to 3/4 mile.
 ** When ALS inop, increase RVR to 55, vis to 1 mile.



ATIS* 244.575	APP CON 125.1 281.45 271°-089° 132.1 360.6 090°-270°	TOWER* 133.2 290.425	GND CON 123.25 251.125
-------------------------	--	--------------------------------	----------------------------------

*** When ALS inop, increase CAT AB RVR to 55, vis to 1 mile; CAT CDE RVR to 60, vis to 1 1/8 miles.



Circling Visibility Reduction by Helicopters NA.

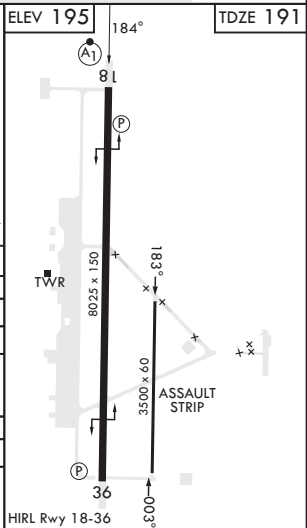
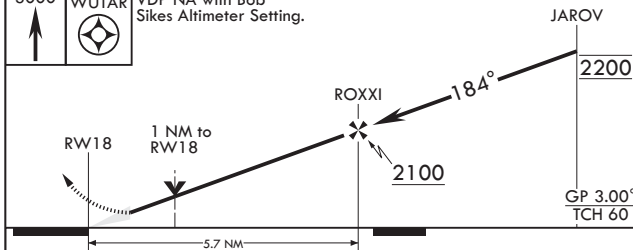
For uncompensated Baro-VNAV systems, LNAV/VNAV NA below -15°C or above 54°C.

When Local altimeter setting not received, use Bob Sikes altimeter setting.

With Bob Sikes altimeter setting:
 Increase LNAV/VNAV DA by 21 and HAT by 21
 LNAV not authorized.
 When ALS inop, increase RVR to 45, vis to 7/8 miles.

EMERG SAFE ALT 100 NM 3500

3000 WUTAR VDP NA with Bob Sikes Altimeter Setting.



CATEGORY	A	B	C	D	E
LNAV/VNAV DA*	441/24		250	(300-1/2)	
LNAV MDA**	560/24	369 (400-1/2)	560/35	369	(400-3/8)
C CIRCLING	660-1 465 (500-1)	700-1 505 (600-1)	700-1 1/2 505 (600-1 1/2)	760-2 565 (600-2)	780-2 585 (600-2)
BOB SIKES ALTIMETER SETTING MINIMUMS					
LNAV MDA***	580/24	389 (400-1/2)	580/35	389	(400-3/8)
C CIRCLING	680-1 485 (500-1)	740-1 545 (600-1)	740-1 1/2 545 (600-1 1/2)	760-2 565 (600-2)	800-2 1/4 605 (700-2 1/4)

VALPARAISO, FLORIDA

30°39'N - 86°31'W

DUKE FIELD (EGLIN AF AUX NR 3) (KEGI)

Orig 23MAR23
TERPS

RNAV (GPS) Z RWY 18

SE-3, 28 NOV 2024 to 26 DEC 2024

SE-3, 28 NOV 2024 to 26 DEC 2024