

VALPARAISO, FLORIDA

# RNAV (GPS) Z RWY 36

APCH CRS <b>004°</b>	Rwy Idg TDZE Arprt Elev	<b>8025</b> <b>191</b> <b>195</b>
-------------------------	-------------------------------	---

AL-699 (USAF)

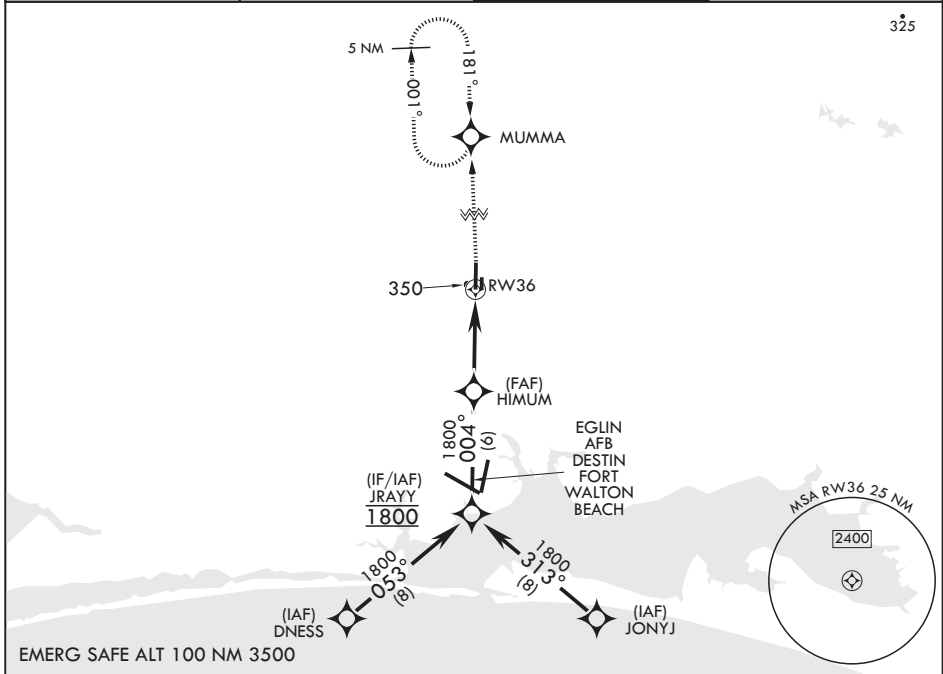
DUKE FIELD (EGLIN AF AUX NR 3) (KEGI)

RNP APCH

MISSED APPROACH: Climb to 700, then climbing left turn to 2000 direct MUMMA and hold.

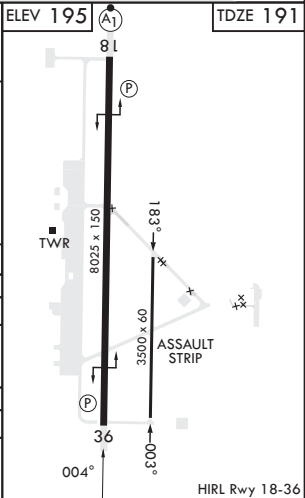
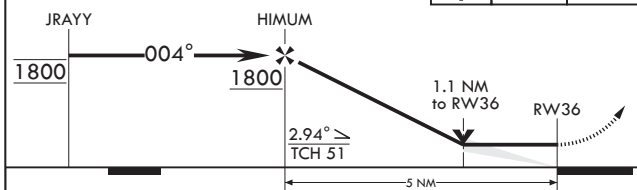
Circling Visibility Reduction by Helicopters NA.  
When Local altimeter setting not received, use Bob Sikes altimeter setting.

ATIS* <b>244.575</b>	APP CON <b>125.1 281.45 271°-089°</b> <b>132.1 360.6 090°-270°</b>	TOWER* <b>133.2 290.425</b>	GND CON <b>123.25 251.125</b>
-------------------------	--	--------------------------------	----------------------------------



VDP NA with Bob Sikes Altimeter Setting.

700	2000	MUMMA	ELEV 195	(A1)	TDZE 191
-----	------	-------	----------	------	----------



CATEGORY	A	B	C	D	E
LNAV MDA	600/55	409 (500-1)	600/60	409	(500-1½)
<b>C</b> CIRCLING	660-1 465 (500-1)	700-1 505 (600-1)	700-1½ 505 (600-1½)	760-2 565 (600-2)	780-2 585 (600-2)
BOB SIKES ALTIMETER SETTING MINIMUMS					
LNAV MDA	640/55	449 (500-1)	640-1½	449	(500-1½)
<b>C</b> CIRCLING	680-1 485 (500-1)	740-1 545 (600-1)	740-1½ 545 (600-1½)	760-2 565 (600-2)	800-2¼ 605 (700-2¼)

VALPARAISO, FLORIDA

30°39'N - 86°31'W

DUKE FIELD (EGLIN AF AUX NR 3) (KEGI)

Orig 23MAR23  
TERPS

# RNAV (GPS) Z RWY 36

SE-3, 28 NOV 2024 to 26 DEC 2024

SE-3, 28 NOV 2024 to 26 DEC 2024