

VORTAC CEW <b>115.9</b> Chan <b>106</b>	APCH CRS <b>140°</b>	Rwy Idg THRE Arprt Elev <b>NA</b> <b>NA</b> <b>195</b>
---	-------------------------	---

[USAF]

DUKE FLD (EGLIN AF AUX NR3) (KEGI)

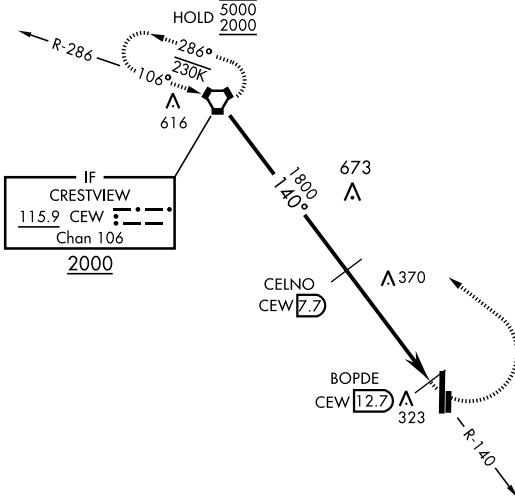
DME required

MISSED APPROACH: Climbing left turn to 2000 direct CEW VORTAC and hold.

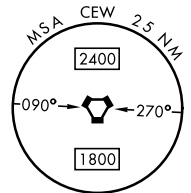
ATIS ★ <b>244.575</b>	EGLIN APP CON <b>125.1 281.45</b> (271° - 089°) <b>132.1 360.6</b> (090° - 270°)	DUKE TOWER ★ <b>133.2 290.425</b>	GND CON <b>123.25 251.125</b>
--------------------------	--	--------------------------------------	----------------------------------

358

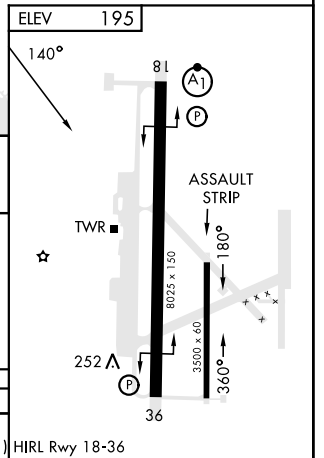
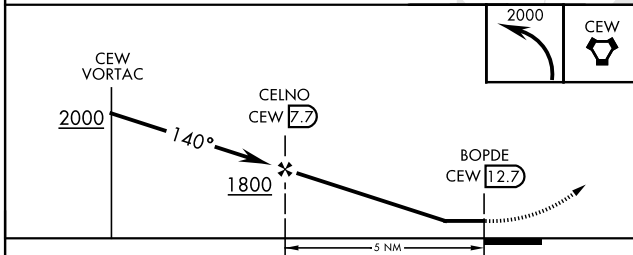
630  
A



IF  
CRESTVIEW  
115.9 CEW  
Chan 106  
2000



EMERG SAFE ALT 100 NM 3500



CATEGORY	A	B	C	D	E	
CIRCLING	680-1	485 (500-1)	680-1½ 485 (500-1½)	820-2 625 (700-2)	820-2¼ 625 (700-2¼)	HIRL Rwy 18-36

SE-3, 28 NOV 2024 to 26 DEC 2024

SE-3, 28 NOV 2024 to 26 DEC 2024