

WAAS CH 70405 W18A	APP CRS 185°	Rwy Idg TDZE Apt Elev	6499 813 813
--	------------------------	-----------------------------	---

RNAV (GPS) RWY 18

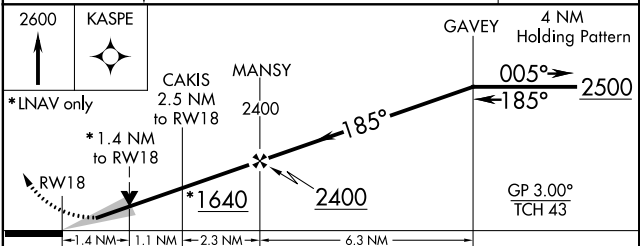
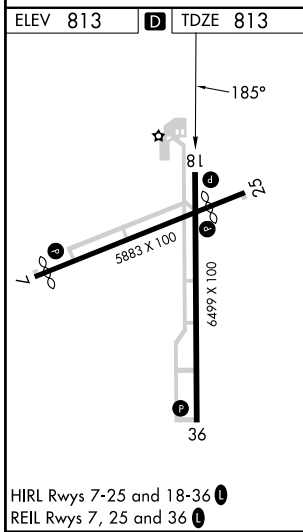
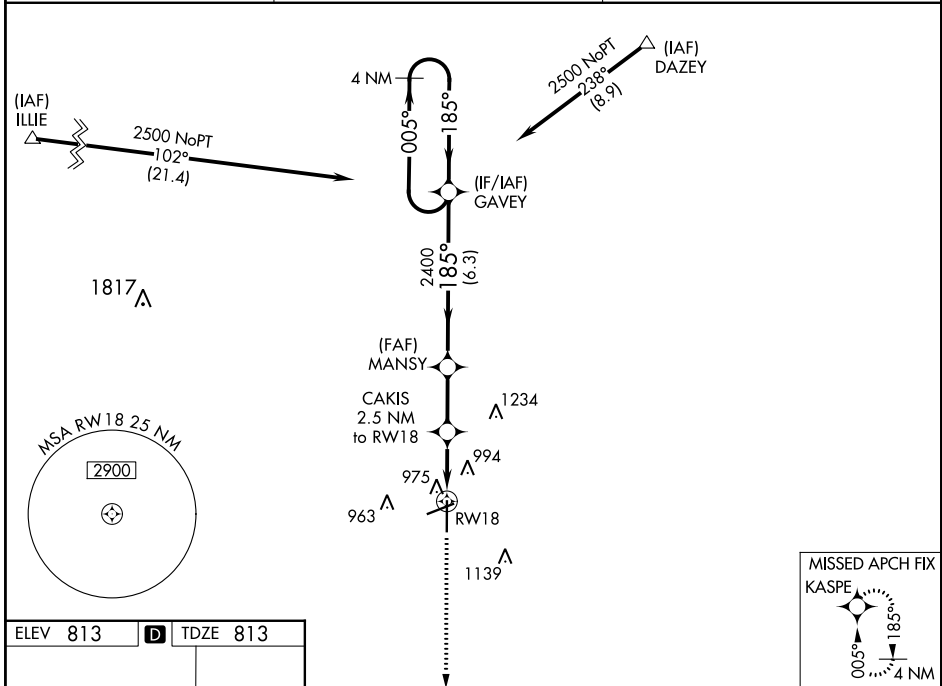
FINDLAY (F'DY)

RNP APCH-GPS.

⚠ For uncompensated Baro-VNAV systems, LNAV/VNAV NA below -16°C or above 47°C. Baro-VNAV and VDP NA when using Lima Allen County altimeter setting. When local altimeter setting not received, use Lima Allen County altimeter setting; increase all DAs/MDAs 80 feet; increase LNAV Cat C/D and Circling Cat C/D visibility ¼ SM. Circling Rwy 7 NA at night.

MISSED APPROACH: Climb to 2600 direct KASPE and hold.

ASOS 132.85	TOLEDO APP CON 120.8 317.55	UNICOM 122.725 (CTAF) 0
-----------------------	---------------------------------------	-----------------------------------



CATEGORY	A	B	C	D
LPV DA	1063-1		250 (300-1)	
LNAV/VNAV DA	1320-1¾		507 (600-1¾)	
LNAV MDA	1300-1	487 (500-1)	1300-1⅜ 487 (500-1⅜)	1300-1½ 487 (500-1½)
CIRCLING	1440-1	627 (700-1)	1440-1¾ 627 (700-1¾)	1540-2¼ 727 (800-2¼)

FINDLAY, OHIO
Amdt 1C 19MAY22

41°01'N-83°40'W

RNAV (GPS) RWY 18

EC-2, 28 NOV 2024 to 26 DEC 2024

EC-2, 28 NOV 2024 to 26 DEC 2024