

WAAS CH <b>72705</b> <b>W36A</b>	APP CRS <b>005°</b>	Rwy Idg TDZE Apt Elev	<b>6499</b> <b>809</b> <b>813</b>
--	------------------------	-----------------------------	---

# RNAV (GPS) RWY 36

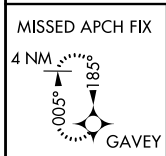
FINDLAY (F'DY)

RNP APCH-GPS.

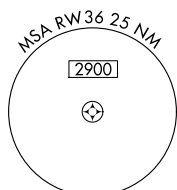
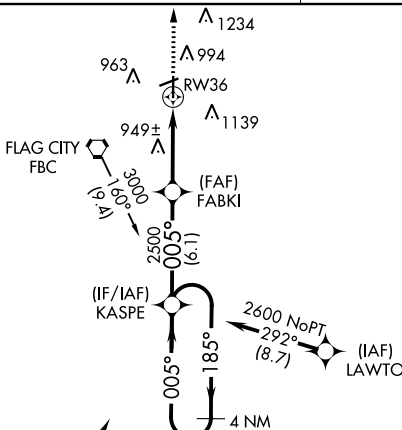
**▼** For uncompensated Baro-VNAV systems, LNAV/VNAV NA below -16°C or above 47°C.  
**▲** Baro-VNAV and VDP NA when using Lima Allen County altimeter setting.  
 When local altimeter setting not received, use Lima Allen County altimeter setting; increase all DAs/MDAs 80 feet; increase LNAV Cat C/D visibility 1/8 SM and Circling Cat C/D visibility 1/4 SM.  
 Circling Rwy 7 NA at night.

**MISSED APPROACH:**  
 Climb to 2500 direct GAVEY and hold.

ASOS <b>132.85</b>	TOLEDO APP CON <b>120.8 317.55</b>	UNICOM <b>122.725 (CTAF)</b>
-----------------------	---------------------------------------	---------------------------------



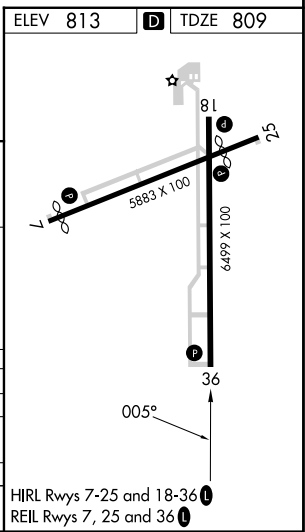
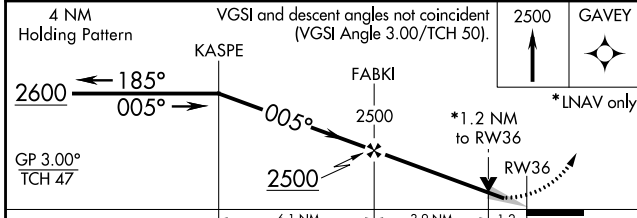
Procedure NA for arrival on FBC VORTAC airway radials 148 CW 200.



▲ 1982



Procedure NA for arrival on ROD VORTAC airway radials 023 CW 088.



4 NM Holding Pattern	VGSI and descent angles not coincident (VGSI Angle 3.00/TCH 50).		2500	GAVEY
GP 3.00° TCH 47	← 185°	→ 005°	← 005°	*LNAV only
	2600	2500	2500	*1.2 NM to RW36
	← 6.1 NM	← 3.9 NM	← 1.2	
CATEGORY	A	B	C	D
LPV DA		1106-1	297 (300-1)	
LNAV/VNAV DA		1229-1½	420 (500-1½)	
LNAV MDA	1220-1	411 (500-1)	1220-1¼	411 (500-1¼)
CIRCLING	1440-1	627 (700-1)	1440-1¾	1540-2¼
		627 (700-1¾)	727 (800-2¼)	

HIRL Rwy 7-25 and 18-36  
 REIL Rwy 7, 25 and 36

EC-2, 28 NOV 2024 to 26 DEC 2024

EC-2, 28 NOV 2024 to 26 DEC 2024