

# VOR RWY 35

VORTAC RQZ <b>112.2</b> Chan <b>59</b>	APCH CRS <b>015°</b>	Rwy ldg TDZE <b>661</b> Arpt Elev <b>685</b>
--	-------------------------	---

AL-703 [USA]

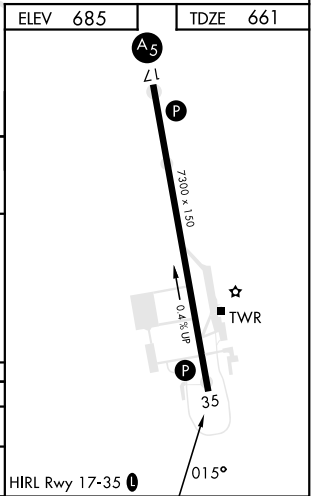
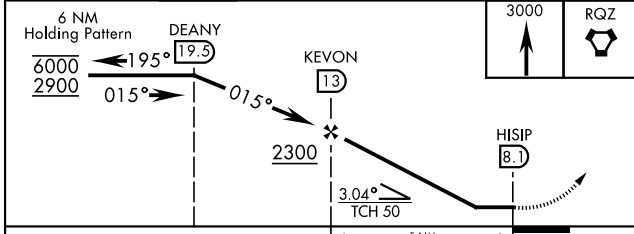
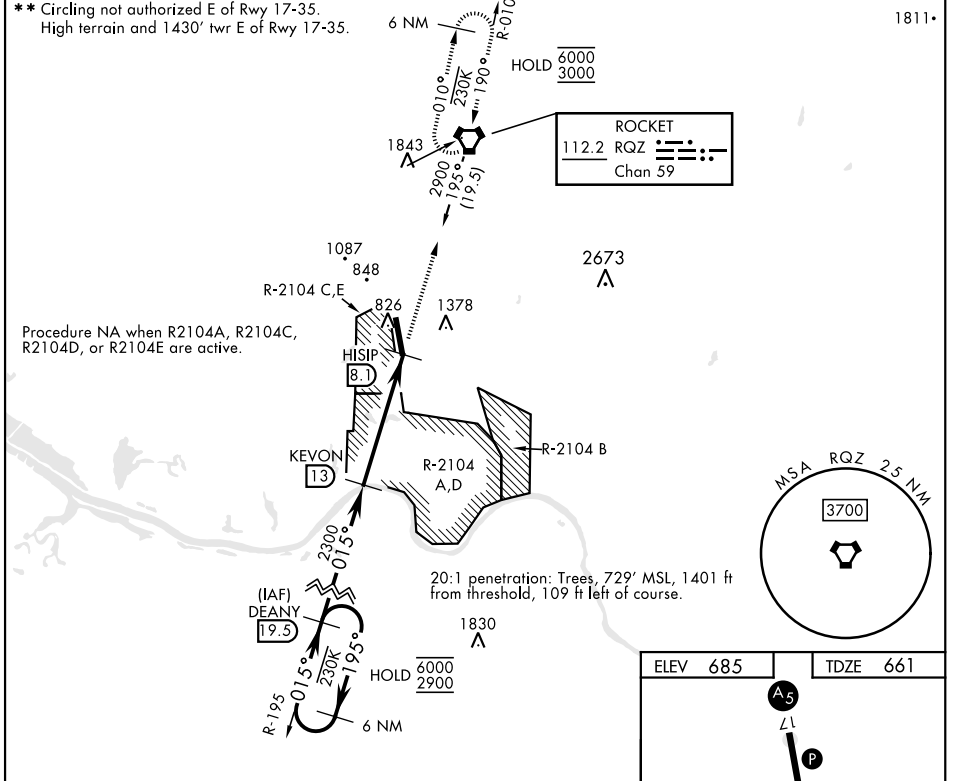
REDSTONE AAF (KHUA)

DME required

- ▼ \* At night, operational VGSI required, remain on or above VGSI glidepath until threshold.
- ▲ Helicopter visibility reduction NA.

MISSED APPROACH: Climb to 3000 direct RQZ VORTAC and hold. Do not exceed 230 KIAS.

ATIS <b>120.65</b>	HUNTSVILLE APP CON <b>125.6 354.1</b>	TOWER * <b>126.95</b> (CTAF) <b>290.275</b>	PAR
-----------------------	--	--	-----



CATEGORY	A	B	C	D	E
S-35 *	1500-1 839 (900-1)	1500-1¼ 839 (900-1¼)	1500-2½	839	(900-2½)
■ CIRCLING **	1500-1¼	815 (900-1¼)	1500-2½ 815 (900-2½)	1740-3	1055 (1100-3)

# VOR RWY 35

SE-4, 28 NOV 2024 to 26 DEC 2024

SE-4, 28 NOV 2024 to 26 DEC 2024