


LOC I-BWD 109.1	APP CRS 175°	Rwy Idg 5599
		TDZE 1387
		Apt Elev 1387

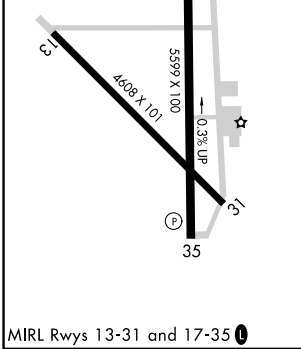
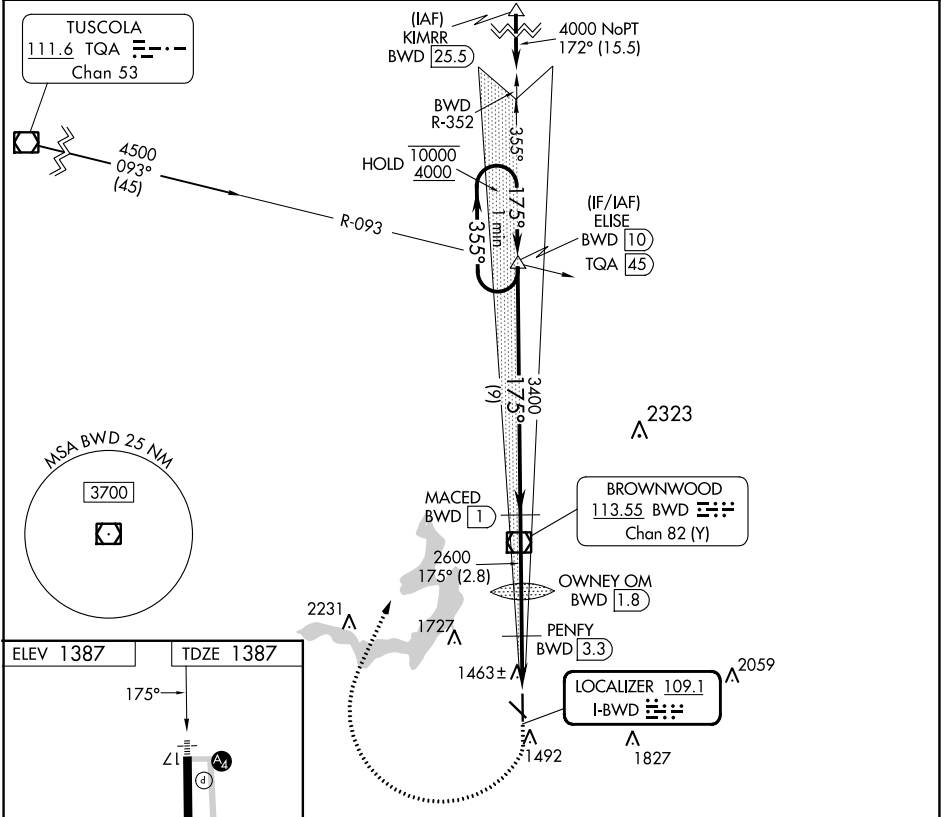
LOC RWY 17

BROWNWOOD RGNL (BWD)

DME required. RADAR required for procedure entry at KIMRR.

MALS  MISSED APPROACH: Climb to 1800 then climbing right turn to 4000 on heading 021° and on BWD VOR/DME R-356 to ELISE INT/BWD 10 DME and hold.

AWOS-3 118.325	FORT WORTH CENTER 127.45 290.3	UNICOM 122.8 (CTAF) 
--------------------------	--	---



CATEGORY	A	B	C	D
S-LOC 17		1760- ³ / ₄	373 (400- ³ / ₄)	
CIRCLING	1820-1 433 (500-1)	1840-1 453 (500-1)	2040-1 ³ / ₄ 653 (700-1 ³ / ₄)	2160-2 ¹ / ₂ 773 (800-2 ¹ / ₂)

SC-3, 28 NOV 2024 to 26 DEC 2024

SC-3, 28 NOV 2024 to 26 DEC 2024