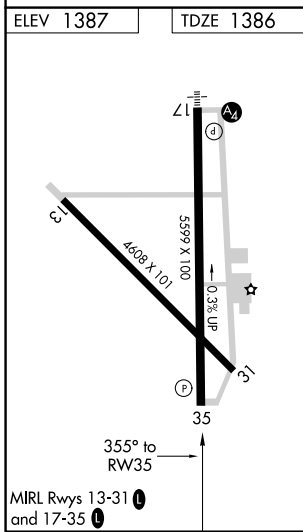
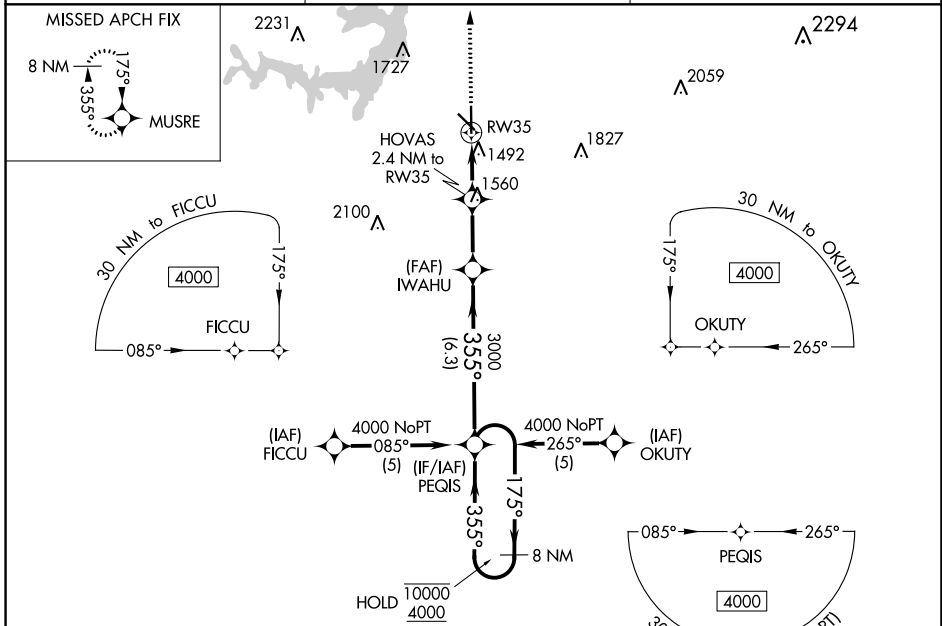


WAAS CH <b>77525</b> <b>W35A</b>	APP CRS <b>355°</b>	Rwy Idg TDZE Apt Elev	<b>5599</b> <b>1386</b> <b>1387</b>
--	------------------------	-----------------------------	---

# RNAV (GPS) RWY 35

BROWNWOOD RGNL (BWD)

RNP APCH. ▼ Rwy 35 helicopter visibility reduction below ¾ SM NA.		MISSED APPROACH: Climb to 4000 direct MUSRE and hold.
AWOS-3 <b>118.325</b>	FORT WORTH CENTER <b>127.45 290.3</b>	UNICOM <b>122.8 (CTAF)</b>



ELEV 1387	TDZE 1386
4000	MUSRE
*LNAV only.	
HOVAS 2.4 NM to RW35	IWAHU 3000
*1.1 NM to RW35	PEQIS 8 NM Holding Pattern
RW35	175° → 10000
	← 355° 4000
	GP 3.00°
	TCH 45
	1.1   1.3 NM   2.5 NM   6.3 NM
CATEGORY	A   B   C   D
LPV DA	1636-1   250 (300-1)
LNAV MDA	1780-1   394 (400-1)   1780-1½   1780-1¼
	394 (400-1½)   394 (400-1¼)

SC-3, 28 NOV 2024 to 26 DEC 2024

SC-3, 28 NOV 2024 to 26 DEC 2024