

VOR/DME BWD <b>113.55</b> Chan <b>82 (Y)</b>	APP CRS <b>351°</b>	Rwy Idg <b>5599</b> TDZE <b>1386</b> Apt Elev <b>1387</b>
--	------------------------	---

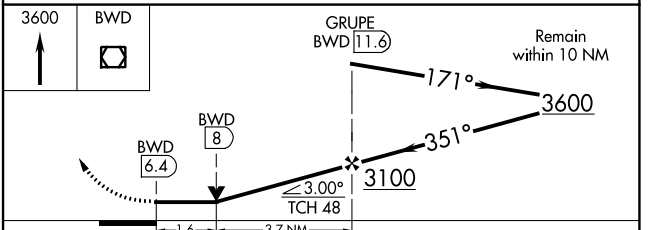
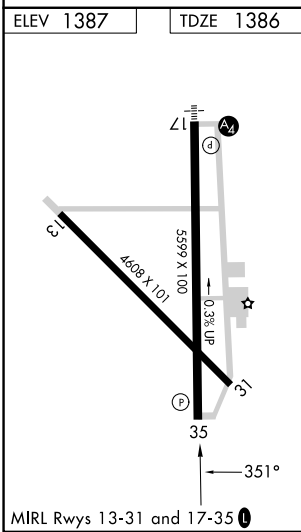
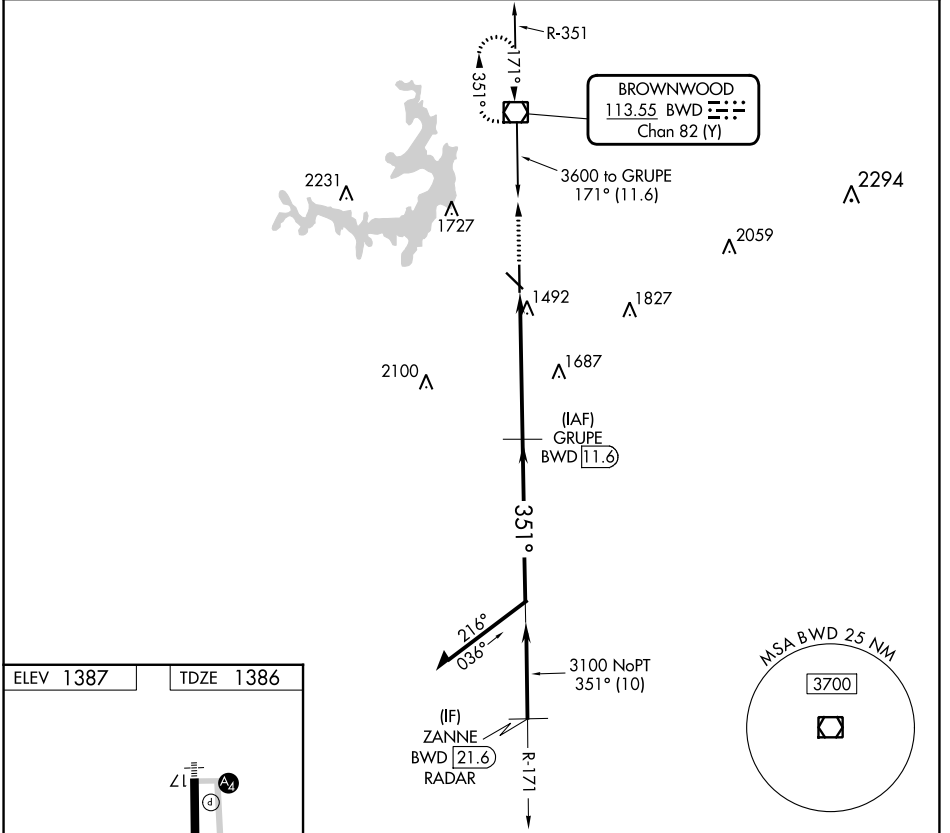
# VOR RWY 35

BROWNWOOD RGNL (BWD)

RADAR required for procedure entry. DME required.

MISSED APPROACH: Climb to 3600 direct BWD VOR/DME and hold, continue climb-in-hold to 3600.

AWOS-3 <b>118.325</b>	FORT WORTH CENTER <b>127.45 290.3</b>	UNICOM <b>122.8 (CTAF)</b>
--------------------------	--	-------------------------------



CATEGORY	A	B	C	D
S-35	1940-1	554 (600-1)	1940-1½	554 (600-1½)
CIRCLING	1940-1	553 (600-1)	2040-1¾ 653 (700-1¾)	2160-2½ 773 (800-2½)

SC-3, 28 NOV 2024 to 26 DEC 2024

SC-3, 28 NOV 2024 to 26 DEC 2024