

(HKY4.HKY) 24249

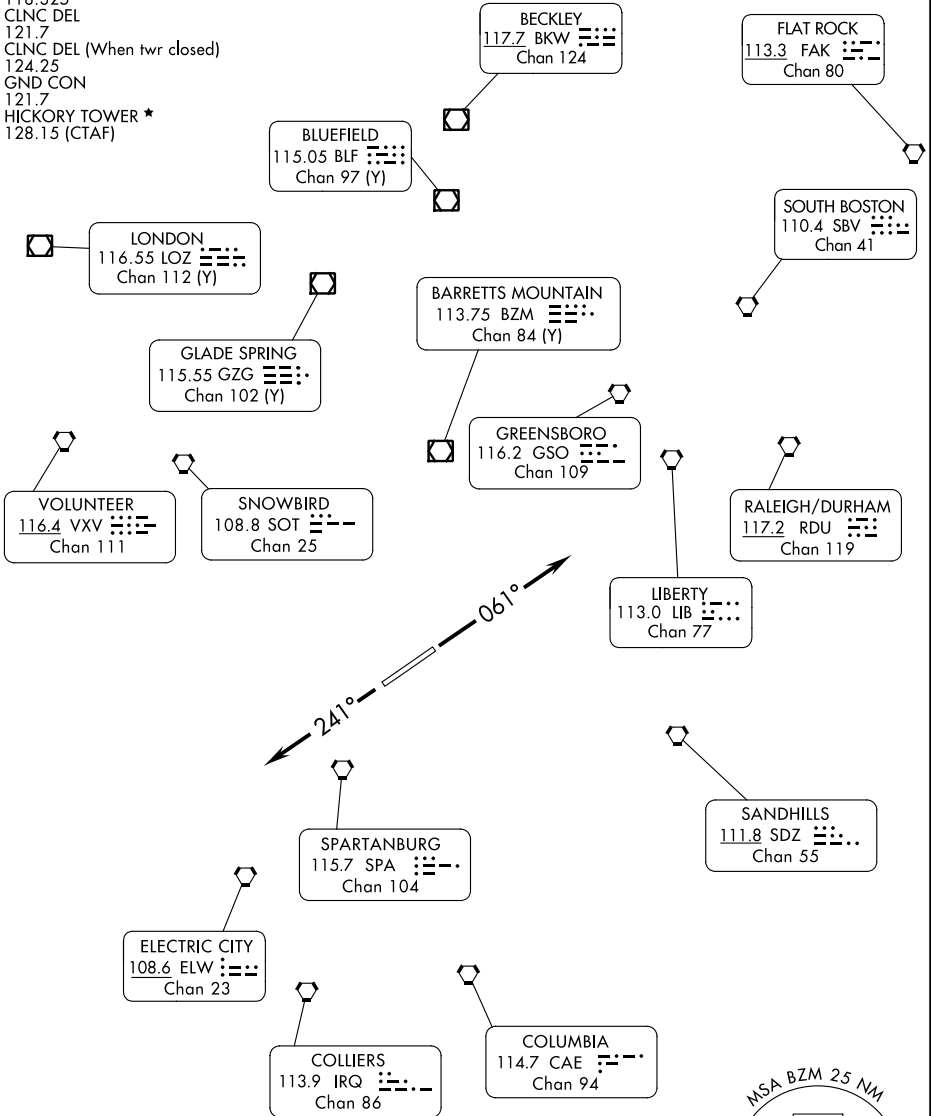
AL-706 (FAA)

# HICKORY FOUR DEPARTURE (OBSTACLE)

HICKORY RGNL (HKY)  
HICKORY, NORTH CAROLINA

ATLANTA CENTER  
125.15 263.0  
ASOS  
118.325  
CLNC DEL  
121.7  
CLNC DEL (When twr closed)  
124.25  
GND CON  
121.7  
HICKORY TOWER ★  
128.15 (CTAF)

RADAR required.



SE-2, 28 NOV 2024 to 26 DEC 2024

SE-2, 28 NOV 2024 to 26 DEC 2024

### TAKEOFF MINIMUMS

Rwys 6, 24: Standard with minimum climb of 340'/NM to 4000.

NOTE: Chart not to scale.

(CONTINUED ON FOLLOWING PAGE)

# HICKORY FOUR DEPARTURE (OBSTACLE)

HICKORY, NORTH CAROLINA  
HICKORY RGNL (HKY)

(HKY4.HKY) 05SEP24

# HICKORY FOUR DEPARTURE (OBSTACLE)

## DEPARTURE ROUTE DESCRIPTION

TAKEOFF RUNWAY 6: Climb on heading 061°, or heading assigned by ATC, Thence . . . .

TAKEOFF RUNWAY 24: Climb on heading 241°, or heading assigned by ATC, Thence . . . .

. . . . expect RADAR vectors to join filed route. Maintain 4000 or assigned altitude, expect filed altitude/flight level ten minutes after departure.

### TAKEOFF OBSTACLE NOTES:

Rwy 6: Trees beginning 60' from DER, 307' left of centerline, up to 31' AGL/1209' MSL.  
Tree 1269' from DER, 782' right of centerline, 1241' MSL.  
Trees beginning 1428' from DER, 765' right of centerline, up to 1259' MSL.

Rwy 24: Trees, vehicle on road and pole beginning 17' from DER, 398' left of centerline, up to 1193' MSL.  
Trees beginning 153' from DER, 337' right of centerline, up to 1158' MSL.  
Tree 303' from DER, 478' left of centerline, 1217' MSL.  
Trees and NAVAID beginning 558' from DER, on centerline, up to 1161' MSL.  
Trees beginning 645' from DER, 459' left of centerline, up to 1227' MSL.  
Trees beginning 868' from DER, 562' left of centerline, up to 1229' MSL.  
Trees beginning 1040' from DER, 425' left of centerline, up to 1232' MSL.  
Trees beginning 1101' from DER, 559' right of centerline, up to 1180' MSL.  
Trees and transmission line beginning 1248' from DER, 38' right of centerline, up to 1181' MSL.  
Trees and pole beginning 1311' from DER, 4' left of centerline, up to 1243' MSL.  
Tree 1732' from DER, 193' right of centerline, 83' AGL/1183' MSL.  
Trees and pole beginning 1741' from DER, 3' right of centerline, up to 98' AGL/1208' MSL.  
Trees beginning 2162' from DER, 1' right of centerline, up to 101' AGL/1221' MSL.  
Trees beginning 2227' from DER, on centerline, up to 95' AGL/1225' MSL.  
Trees beginning 2262' from DER, 130' right of centerline, up to 98' AGL/1230' MSL.  
Trees beginning 2301' from DER, 28' right of centerline, up to 1243' MSL.  
Trees, power lines and pole beginning 2501' from DER, 1' left of centerline, up to 1245' MSL.  
Trees beginning 2525' from DER, 31' right of centerline, up to 102' AGL/1248' MSL.  
Trees and poles beginning 2596' from DER, 1' left of centerline, up to 1254' MSL.  
Trees beginning 2671' from DER, on and right of centerline, up to 119' AGL/1255' MSL.  
Trees beginning 3062' from DER, 171' left of centerline, up to 1260' MSL.  
Trees beginning 3272' from DER, 42' left of centerline, up to 1263' MSL.  
Trees and poles beginning 3394' from DER, 8' left of centerline, up to 1270' MSL.

SE-2, 28 NOV 2024 to 26 DEC 2024

SE-2, 28 NOV 2024 to 26 DEC 2024