

WAAS CH 78216 W18A	APP CRS 182°	Rwy Idg 8000 TDZE 407 Apt Elev 407
--	------------------------	---

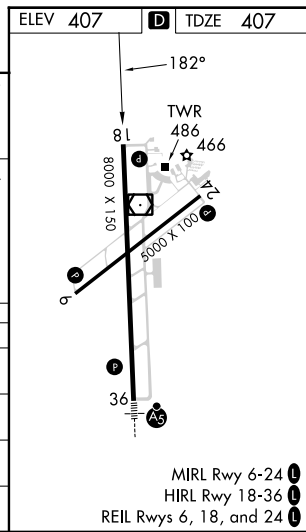
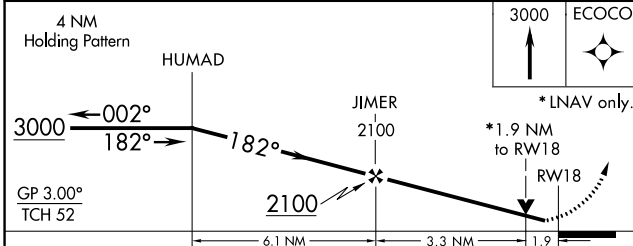
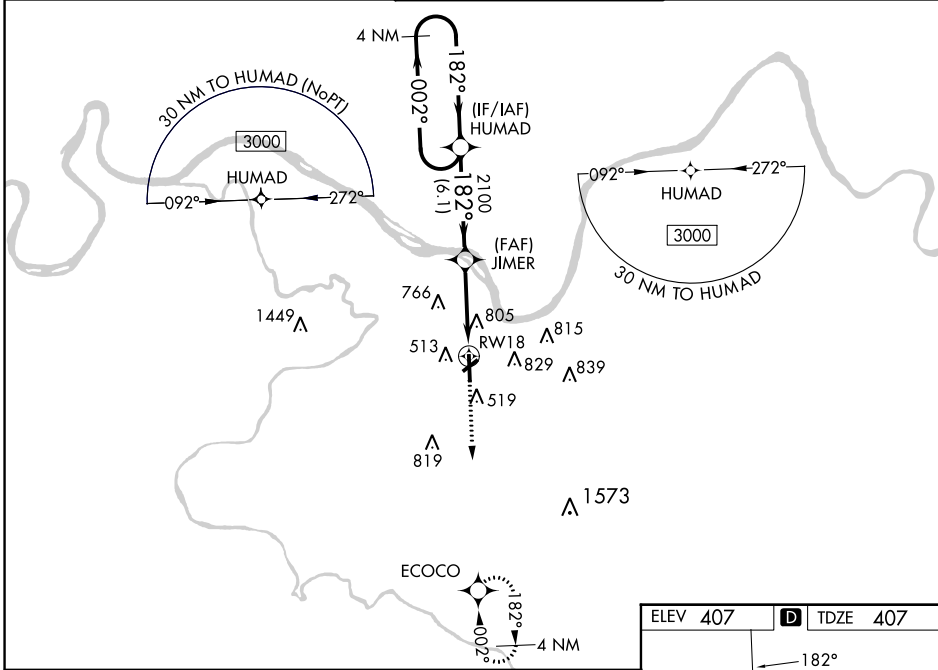
RNAV (GPS) RWY 18

OWENSBORO/DAVIESS COUNTY RGNL (OWB)

⚠ For uncompensated Baro-VNAV systems, LNAV/VNAV NA below -15° C (5°F) or above 54°C (130°F). DME/DME RNP-0.3 NA. Rwy 18 helicopter visibility reduction below 3/4 SM NA. When local altimeter setting not received, use Evansville altimeter setting: increase LPV DA to 666 feet; increase LNAV/VNAV DA to 1204 feet and all Cats visibility 1/4 mile; increase all MDA 60 feet and LNAV Cats C/D visibility 1/8 mile and Circling Cats C/D visibility 1/4 mile. Baro-VNAV and VDP NA when using Evansville altimeter setting.

MISSED APPROACH:
Climb to 3000 direct ECOCO and hold.

AWOS-3PT 119.025	EVANSVILLE APP CON * 124.025 290.9	OWENSBORO TOWER * 120.7 (CTAF) 251.15	GND CON 121.7	UNICOM 122.95
----------------------------	--	---	-------------------------	-------------------------



CATEGORY	A	B	C	D
LPV DA	607-3/4 200 (200-3/4)			
LNAV/DA VNAV	1145-2 1/2 738 (800-2 1/2)			
LNAV MDA	1060-1	653 (700-1)	1060-1 7/8	653 (700-1 7/8)
CIRCLING	1060-1 653 (700-1)	1120-1 713 (800-1)	1140-2 733 (800-2)	1140-2 1/4 733 (800-2 1/4)

MIRL Rwy 6-24
HIRL Rwy 18-36
REIL Rws 6, 18, and 24

SE-1, 28 NOV 2024 to 26 DEC 2024

SE-1, 28 NOV 2024 to 26 DEC 2024