

WAAS CH 40430 W06A	APP CRS 056°	Rwy Idg TDZE Apt Elev	5000 405 407
--	------------------------	-----------------------------	---

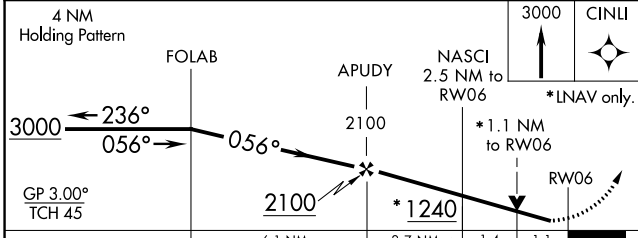
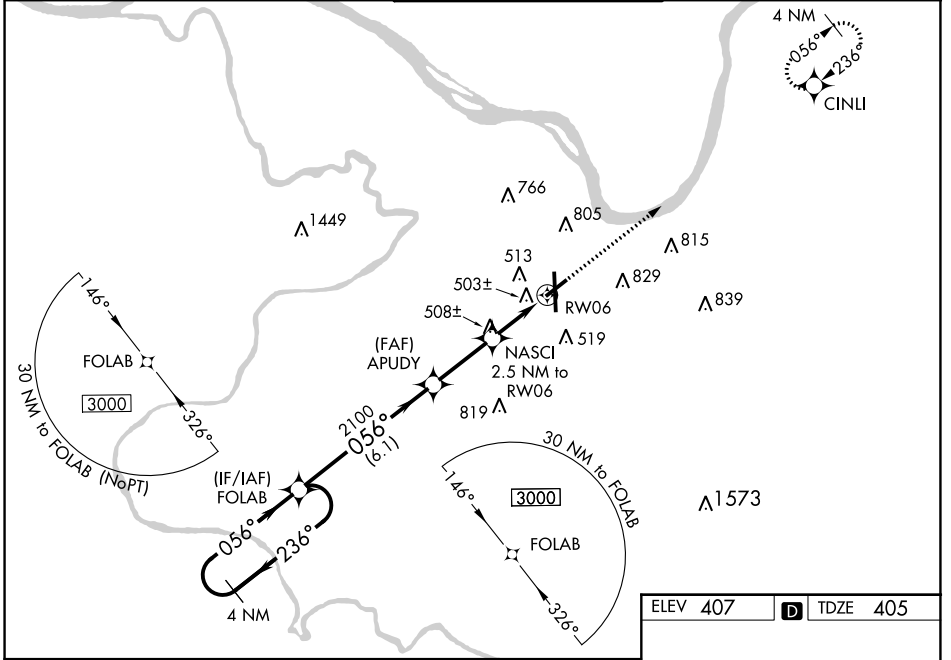
RNAV (GPS) RWY 6

OWENSBORO/DAVIESS COUNTY RGNL (OWB)

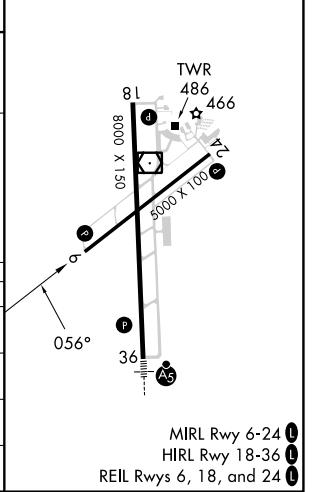
⚠ For uncompensated Baro-VNAV systems, LNAV/VNAV NA below -15°C (5°F) or above 54°C (130°F). DME/DME RNP-0.3 NA. Rwy 6 helicopter visibility reduction below 3/4 SM NA. When local altimeter setting not received, use Evansville altimeter setting: increase LPV DA to 719 feet and all Cats visibility 1/8 mile; increase LNAV/VNAV DA to 734 feet and all Cats visibility 1/4 mile; increase all MDA 60 feet and LNAV Cats C/D and Circling Cats C/D visibility 1/4 mile. Baro-VNAV and VDP NA when using Evansville altimeter setting.

MISSED APPROACH:
Climb to 3000 direct CINLI and hold.

AWOS-3PT 119.025	EVANSVILLE APP CON * 124.025 290.9	OWENSBORO TOWER * 120.7 (CTAF) 251.15	GND CON 121.7	UNICOM 122.95
----------------------------	--	---	-------------------------	-------------------------



ELEV 407	TDZE 405
----------	----------



CATEGORY	A	B	C	D
LPV DA		660-7/8	255 (300-7/8)	
LNAV/VNAV DA		675-7/8	270 (300-7/8)	
LNAV MDA	800-1	395 (400-1)	800-1 1/8	395 (400-1 1/8)
CIRCLING	860-1 453 (500-1)	1120-1 713 (800-1)	1140-2 733 (800-2)	1140-2 1/4 733 (800-2 1/4)

RNAV (GPS) RWY 6

SE-1, 28 NOV 2024 to 26 DEC 2024

SE-1, 28 NOV 2024 to 26 DEC 2024

MIRL Rwy 6-24
HIRL Rwy 18-36
REIL Rws 6, 18, and 24