

WAAS CH <b>70408</b> <b>W36A</b>	APP CRS <b>003°</b>	Rwy Idg TDZE Apt Elev	<b>5001</b> <b>662</b> <b>663</b>
--	------------------------	-----------------------------	---

# RNAV (GPS) RWY 36

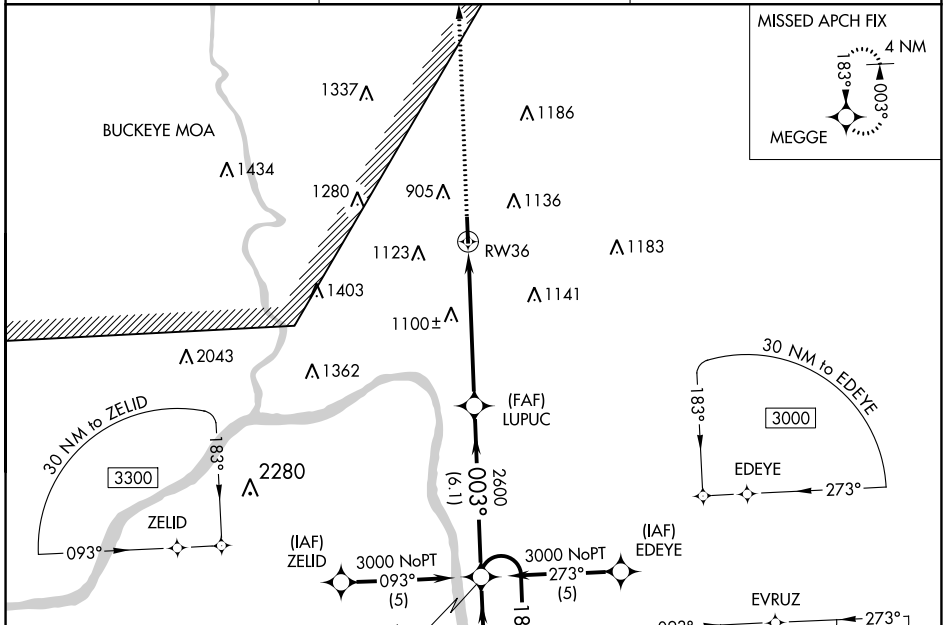
GREATER PORTSMOUTH RGNL (PMH)

**▼** When local altimeter setting not received, use Huntington altimeter setting and increase DA to 1008 feet and LPV visibility ¼ SM all Cats; increase all MDA 100 feet and LNAV Cat B visibility ¼ SM, Cat C/D visibility ½ SM and increase Circling visibility ¼ SM all Cats. Visibility reduction by helicopters NA. DME/DME RNP-0.3 NA.

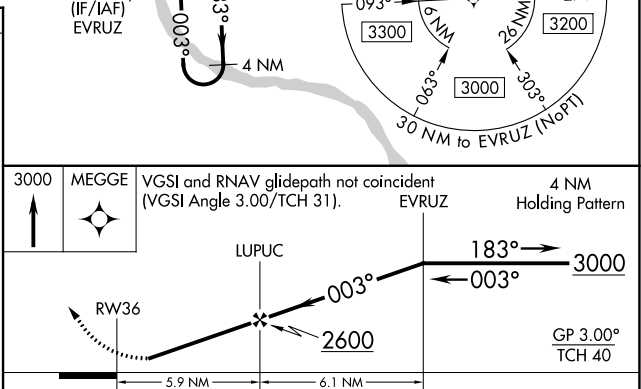
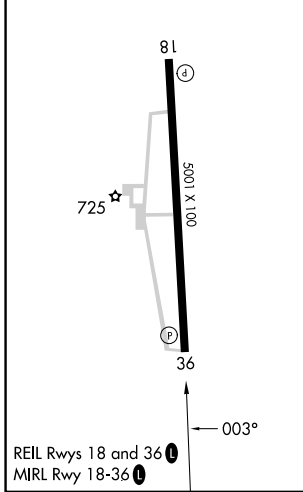
**▲ NA**

**MISSED APPROACH:**  
Climb to 3000 direct MEGGE and hold.

AWOS-3 <b>125.175</b>	HUNTINGTON APP CON <b>128.4 270.1</b>	UNICOM <b>122.8 (CTAF) 0</b>
--------------------------	--	---------------------------------



ELEV 663	TDZE 662
----------	----------



CATEGORY	A	B	C	D
LPV DA	912-1 250 (300-1)			
LNAV MDA	1400-1	738 (800-1)	1400-2	1400-2½
			738 (800-2)	738 (800-2½)
CIRCLING	1400-1	1440-1	1440-2½	1540-2¾
	737 (800-1)	777 (800-1)	777 (800-2½)	877 (900-2¾)

EC-2, 28 NOV 2024 to 26 DEC 2024

EC-2, 28 NOV 2024 to 26 DEC 2024