

WAAS CH 78134 W14A	APP CRS 140°	Rwy Idg TDZE Apt Elev	4002 826 832
--	------------------------	-----------------------------	---

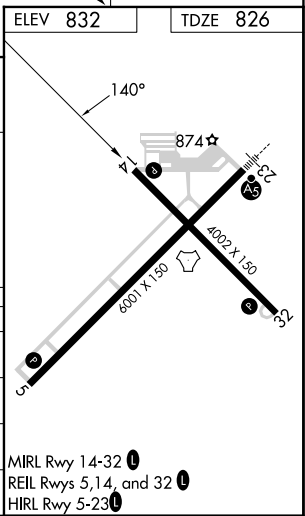
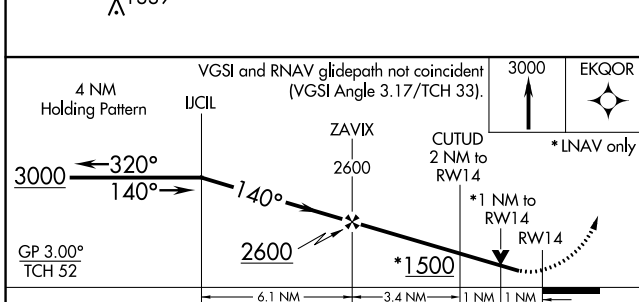
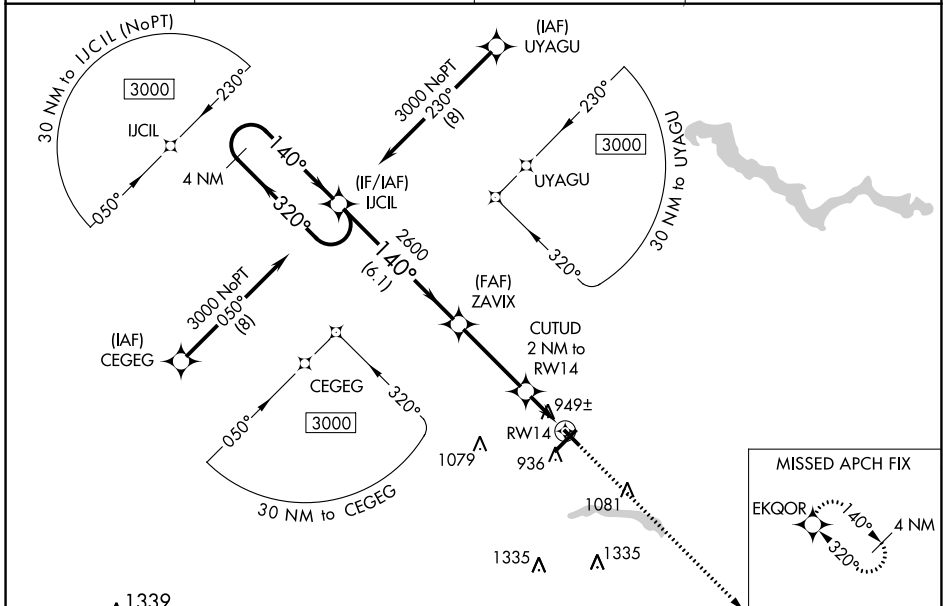
RNAV (GPS) RWY 14

KOKOMO MUNI (OKK)

⚠ For uncompensated Baro-VNAV systems, LNAV/VNAV NA below -1.6°C (4°F) or above 54°C (130°F). DME/DME RNP-0.3 NA. Helicopter visibility reduction below ¾ SM NA.

MISSED APPROACH: Climb to 3000 direct EKGOR and hold.

AWOS-3PT 128.675	GRISSOM APP CON* 121.05 338.275	CLNC DEL 120.0	UNICOM 123.0 (CTAF)
----------------------------	---	--------------------------	-------------------------------



CATEGORY	A	B	C	D
LPV DA		1076-1	250 (300-1)	
LNAV/VNAV DA		1199-1¼	373 (400-1¼)	
LNAV MDA		1200-1	374 (400-1)	
C CIRCLING	1260-1 428 (500-1)	1300-1 468 (500-1)	1400-1½ 568 (600-1½)	1640-2½ 808 (900-2½)

MIRL Rwy 14-32
 REIL Rwys 5, 14, and 32
 HIRL Rwy 5-23

EC-2, 28 NOV 2024 to 26 DEC 2024

EC-2, 28 NOV 2024 to 26 DEC 2024