

# HI-TACAN RWY 27

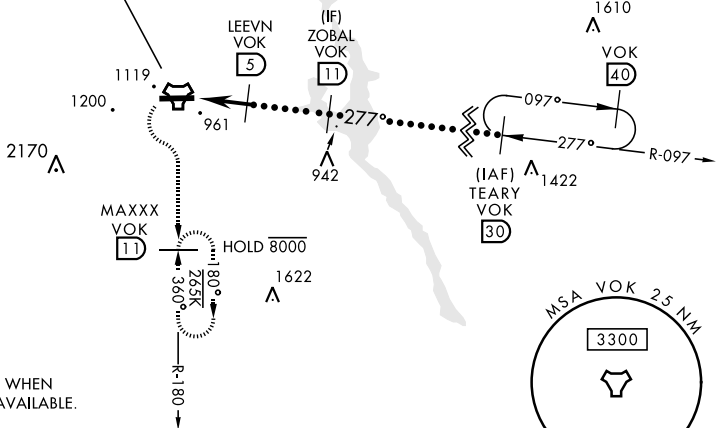
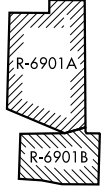
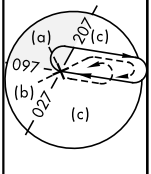
TACAN VOK Chan 41	APCH CRS 277°	Rwy Idg THRE Arprt Elev 9000 904 912	AL-714 [USAF]	VOLK FLD (KVOK)
----------------------	------------------	---	---------------	-----------------

▼ \* When ALS inop, increase vis to 1½ miles.  
 \*\* Circling not authorized South of Rwy 9-27.  
 \*\*\* When ALS inop, increase vis to 1¾ miles.



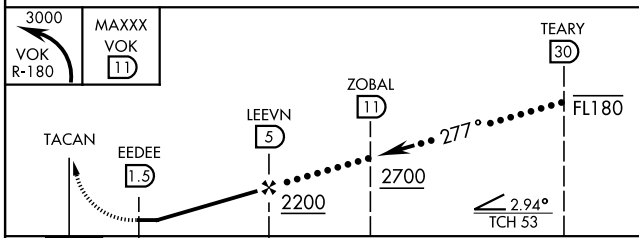
**MISSED APPROACH:** Climbing left turn to 3000 intercept VOK TACAN R-180 to MAXXX and hold.

ATIS <b>134.35 257.85</b>	APP CON <b>135.25 244.875</b>	TOWER★ <b>127.5</b> (CTAF) <b>239.25</b>	GND CON <b>121.9 275.8</b>
------------------------------	----------------------------------	---	-------------------------------

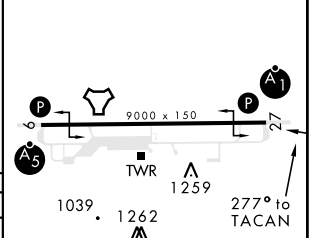


USE LA CROSSE ALTIMETER WHEN LOCAL ALTIMETER IS NOT AVAILABLE.

EMERG SAFE ALT 100 NM 4200



ELEV 912	THRE 904
----------	----------



CATEGORY	C	D	E
S-27 *	1360/45	456 (500-7%)	
CIRCLING **	1500-1½ 588 (600-1½)	1500-2 588 (600-2)	1580-2¼ 668 (700-2¼)
LA CROSSE ALTIMETER SETTING MINIMUMS			
S-27 ***	1500-1¼	596 (600-1¼)	
CIRCLING **	1640-2 728 (800-2)	1640-2¼ 728 (800-2¼)	1720-2¾ 808 (900-2¾)

HIRL Rwy 9-27

# HI-TACAN RWY 27

EC-3, 28 NOV 2024 to 26 DEC 2024

EC-3, 28 NOV 2024 to 26 DEC 2024

