

CAMP DOUGLAS, WISCONSIN

ILS or LOC/DME RWY 27

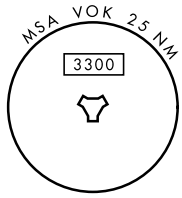
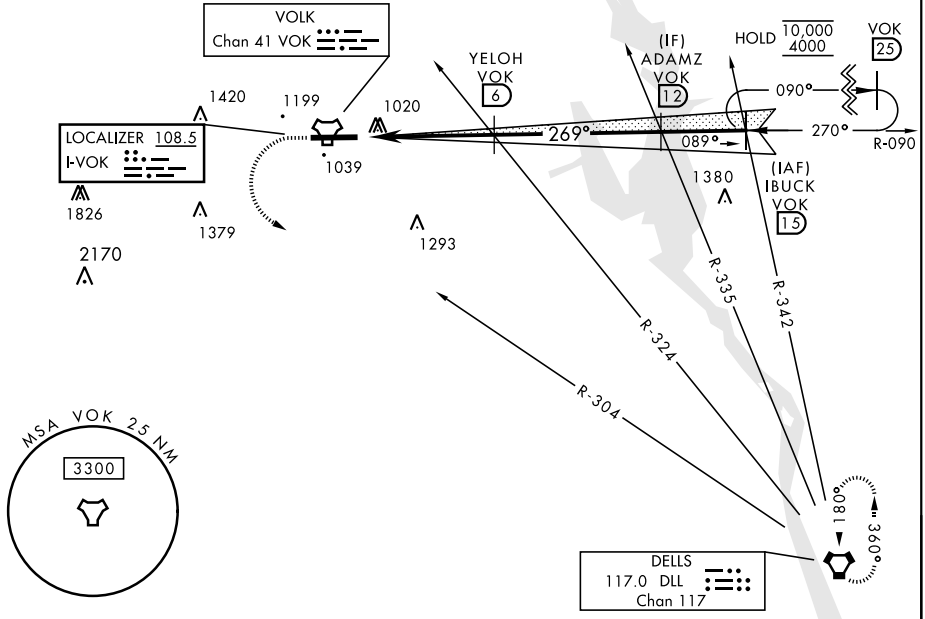
LOC I-VOK 108.5	APCH CRS 269°	Rwy Idg THRE Arprt Elev 9000 904 912	AL-714 [USAF]	VOLK FLD (KVOK)
---------------------------	-------------------------	--	---------------	-----------------

▼ * When ALS inop, increase vis to ¾ mile.
 ** When ALS inop, increase CAT AB vis to 1 mile, CAT CDE vis to 1½ miles.

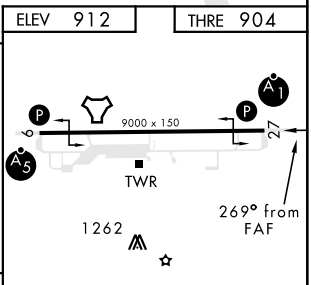
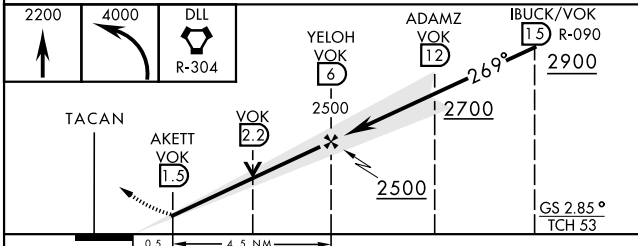
ALSF-1 MISSED APPROACH: Climb to 2200, then climbing left turn to 4000 via DLL VORTAC R-304 direct DLL and hold.

ATIS 134.35 257.85	APP CON 135.25 244.875	TOWER ★ 127.5 (CTAF) 239.25	GND CON 121.9 275.8
------------------------------	----------------------------------	--	-------------------------------

*** Circling NA South of Rwy 9-27.



EMERG SAFE ALT 100 NM 4200



	ELEV 912	THRE 904			
CATEGORY	A	B	C	D	E
S-ILS 27 *	1104/24		200	(200-½)	
S-LOC 27 **	1320/24	416 (500-½)	1320/40	416 (500-¾)	
CIRCLING ***	1400-1 488 (500-1)	1500-1 588 (600-1)	1500-1½ 588 (600-1½)	1500-2 588 (600-2)	1580-2¼ 668 (700-2¼)
HIRL Rwy 9-27					
FAF to MAP 4.5 NM					
Knots					
60 90 120 150 180					
Min:Sec					
4:30 3:00 2:15 1:48 1:30					

CAMP DOUGLAS, WISCONSIN 43°56'N-90°15'W VOLK FLD (KVOK)

ILS or LOC/DME RWY 27

EC-3, 28 NOV 2024 to 26 DEC 2024

EC-3, 28 NOV 2024 to 26 DEC 2024

Amdt 4