

LOC/DME I-DCU 110.55 Chan 42 (Y)	APP CRS 185°	Rwy ldg 6107 TDZE 592 Apt Elev 592
-----------------------------------------------	------------------------	---------------------------------------------------------------

ILS or LOC RWY 18

PRYOR FLD RGNL (DCU)

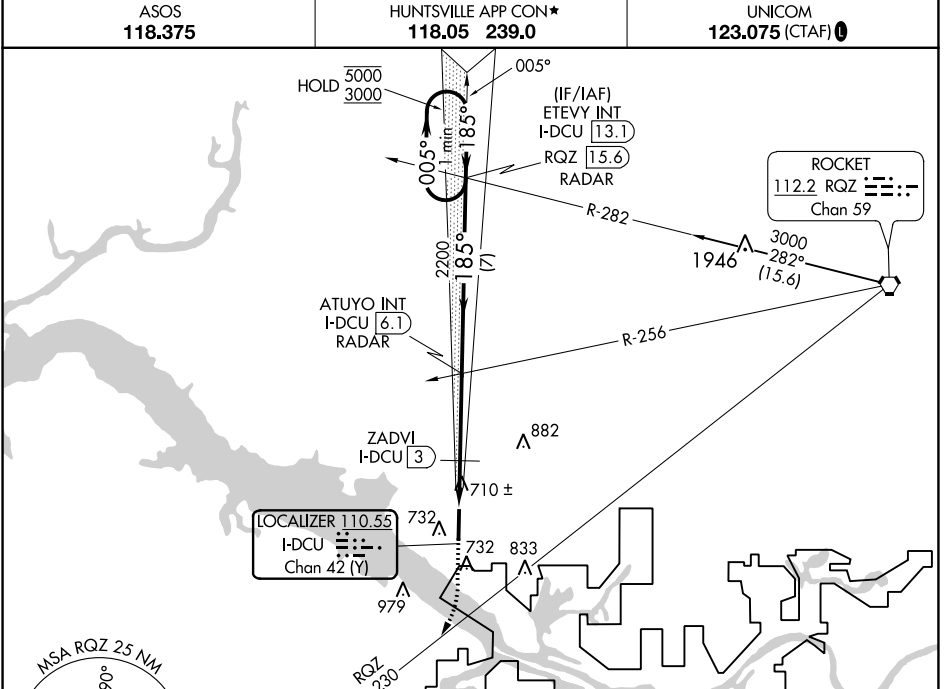
DME required.

ASOS 118.375

HUNTSVILLE APP CON* 118.05 239.0

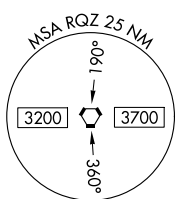
UNICOM 123.075 (CTAF) 0

MISSED APPROACH: Climb to 1700, then climbing right turn to 3000 on RQZ VORTAC R-230 to JUVLO/RQZ 28.7 DME and hold.

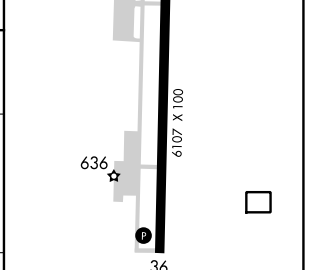
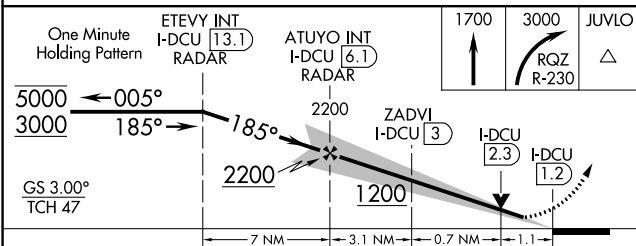


SE-4, 28 NOV 2024 to 26 DEC 2024

SE-4, 28 NOV 2024 to 26 DEC 2024



ELEV 592	TDZE 592
185° 4.9 NM from FAF	81



CATEGORY	A	B	C	D
S-ILS 18		792- ³ / ₄	200 (200- ³ / ₄)	
S-LOC 18	980-1	388 (400-1)	980-1 ¹ / ₈	388 (400-1 ¹ / ₈)
CIRCLING	1040-1	1060-1	1340-2 ¹ / ₄	1340-2 ¹ / ₂
	448 (500-1)	468 (500-1)	748 (800-2 ¹ / ₄)	748 (800-2 ¹ / ₂)

HIRL Rwy 18-36 0					
REIL Rwys 18 and 36 0					
FAF to MAP 4.9 NM					
Knots	60	90	120	150	180
Min:Sec	4:54	3:16	2:27	1:58	1:38