

MAYPORT, FLORIDA

COPTER RNAV (GPS) RWY 5

WAAS CH 84778 W05A	APCH CRS 049°	Rwy ldg TDZE Arprt Elev	8001 12 15
--------------------------	------------------	-------------------------------	------------------

-(USN)

MAYPORT NS (ADM DAVID L MC DONALD FLD) (KNRB)

RNP APCH

RADAR required

⚠ * Circling not authorized at night when the VGSI is inop, unless the St. Johns River is clear of vessels from the mouth of Haulover Creek to St. Johns Point. ATC will advise aircraft on final approach if a conflict is present and coordinate a missed approach as required.

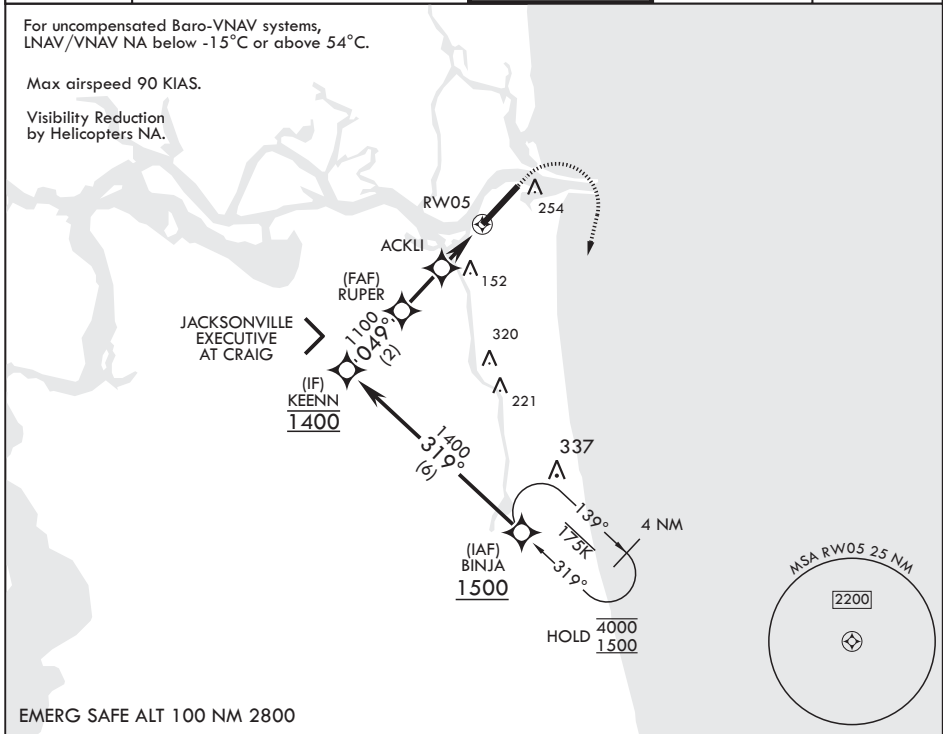
MISSED APPROACH: Climb to 600 then climbing right turn to 1500 direct BINJA and hold.

ATIS★ 236.775	JACKSONVILLE APP CON/DEP CON 124.9 308.4	TOWER★ 118.75 239.3 0	GND CON 126.5 233.7	ASR/PAR
------------------	---	--------------------------	------------------------	---------

For uncompensated Baro-VNAV systems, LNAV/VNAV NA below -15°C or above 54°C.

Max airspeed 90 KIAS.

Visibility Reduction by Helicopters NA.



EMERG SAFE ALT 100 NM 2800

BINJA		VGSI and RNAV glidepath not coincident (VGSI Angle 3.00/TCH 48).		600	1500	BINJA	ELEV 15	TDZE 12	
1500		319°		KEENN		1400		049°	
GP 3.30°		TCH 48		RUPER		1100		580	
ACKLI		RWY 5		1.5 NM		1.5 NM		BCN TWR	
CATEGORY		COPTER		H 3 H		8001 x 200		H 3 H	
LPV DA	212-3/4	200	(200-3/4)	049°		H 3 H		H 3 H	
LNAV/VNAV DA	280-7/8	268	(300-7/8)	H 3 H		H 3 H		H 3 H	
LNAV MDA	400-1	388	(400-1)	H 3 H		H 3 H		H 3 H	
C CIRCLING*	560-1	545	(600-1)	H 3 H		H 3 H		H 3 H	

MAYPORT, FLORIDA

30°23'N - 81°25'W MAYPORT NS (ADM DAVID L MC DONALD FLD) (KNRB)

Amdt 1 05SEP24

COPTER RNAV (GPS) RWY 5

SE-3, 28 NOV 2024 to 26 DEC 2024

SE-3, 28 NOV 2024 to 26 DEC 2024

HIRL all Rwys
REIL all Rwys