

MAYPORT, FLORIDA

COPTER TACAN Z RWY 5

TACAN NRB Chan 51	APCH CRS 055°	Rwy Ldg TDZE Arpt Elev 8001 12 15
-----------------------------	-------------------------	---

[USN]

MAYPORT NS (ADM DAVID L. MC DONALD FLD) (KNRB)

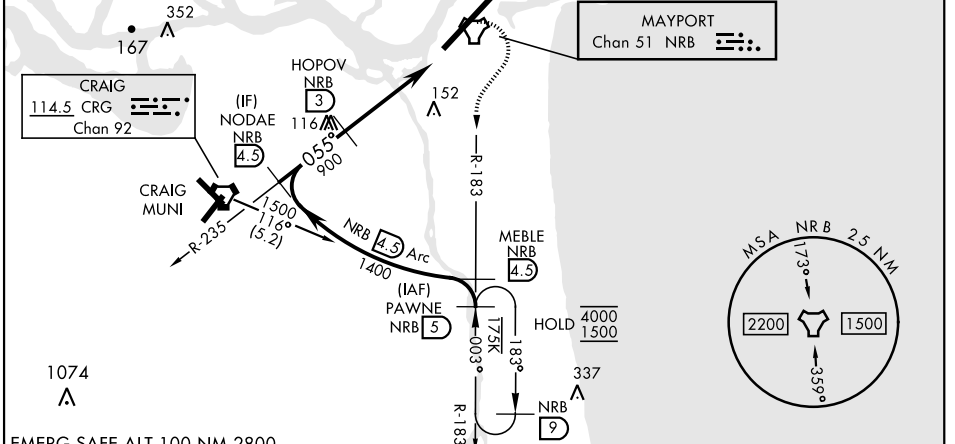
MISSED APPROACH: Climb to 500. Then climbing right turn to 1500 via NRB TACAN R-183 to PAWNE and hold.

ATIS ★ 236.775	JACKSONVILLE APP CON 124.9 308.4	TOWER ★ 118.75 239.30	GND CON 126.5 233.7	ASR/PAR
--------------------------	--	---------------------------------	-------------------------------	---------

CAUTION: When Rwy 23 VGSI inop, Circling to Rwy 23 NA at night.

Max airspeed 90 KIAS

Final approach course is 317' from rwy centerline at 3000' from threshold.



EMERG SAFE ALT 100 NM 2800

PAWNE NRB (5)	MEBLE NRB (4.5)	NODAE NRB (4.5)	HOPOV NRB (3)	INEKE NRB (1.8)	NRB TACAN	PAWNE NRB (5)	ELEV 15	TDZE 12	
<p>VGSI and descent angle not coincident (VGSI Angle 3.00/TCH 48).</p> <p>1500 — 003° — 1500</p> <p>1400 Arc 055° 900</p> <p>3.30° TCH 48</p> <p>2 NM — 0.4</p>									
CATEGORY	COPTER								
S-5	440-½	428	(500-½)						
C CIRCLING	560-1	545	(600-1)					REIL Rwy 5-23 HIRL Rwy 5-23	

MAYPORT, FLORIDA
Amdt 5 05SEP24

30°23'N-81° 25'W

MAYPORT NS (ADM DAVID L. MC DONALD FLD) (KNRB)

COPTER TACAN Z RWY 5

SE-3, 28 NOV 2024 to 26 DEC 2024

SE-3, 28 NOV 2024 to 26 DEC 2024