

MAYPORT, FLORIDA

TACAN Y RWY 23

TACAN NRB Chan 51	APCH CRS 221°	Rwy Ldg TDZE Arpt Elev 8001 15 15
-----------------------------	-------------------------	--

[USN]

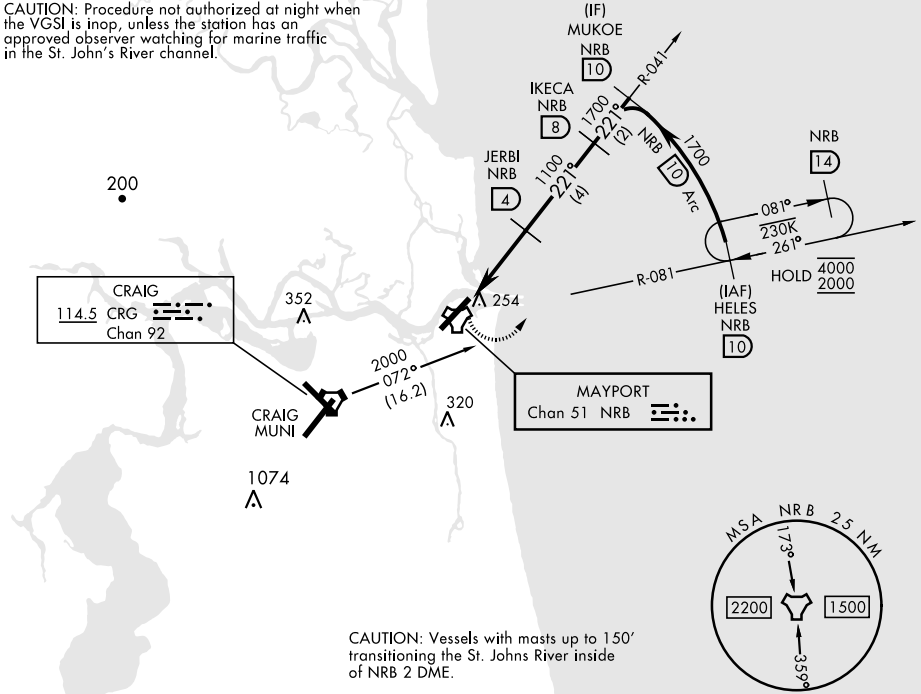
MAYPORT NS (ADM DAVID L. MC DONALD FLD) (KNRB)

<p>▼ Visibility reduction by helicopters NA.</p>	<p>MISSED APPROACH: Climbing left turn to 2000 via NRB TACAN R-081 to HELES and hold.</p>
---	---

<p>ATIS ★ 236.775</p>	<p>JACKSONVILLE APP CON 124.9 308.4</p>	<p>TOWER ★ 118.75 239.30</p>	<p>GND CON 126.5 233.7</p>	<p>ASR/PAR</p>
----------------------------------	--	---	---------------------------------------	----------------

CRG feeder route requires turn in hold.

CAUTION: Procedure not authorized at night when the VGSI is inop, unless the station has an approved observer watching for marine traffic in the St. John's River channel.



CAUTION: Vessels with masts up to 150' transiting the St. Johns River inside of NRB 2 DME.

EMERG SAFE ALT 100 NM 2800

<p>2000 NRB R-081</p> <p>HELES NRB 10</p> <p>LEBAF NRB 1</p> <p>JERBI NRB 4</p> <p>IKECA NRB 8</p> <p>MUKOIE NRB 10</p> <p>1100</p> <p>1700</p> <p>1700</p> <p>3.01° TCH 48</p> <p>3 NM</p>	<p>ELEV 15</p> <p>TDZE 15</p> <p>221°</p> <p>8001 2000</p> <p>TWR</p>															
<table border="1"> <thead> <tr> <th>CATEGORY</th> <th>A</th> <th>B</th> <th>C</th> <th>D</th> </tr> </thead> <tbody> <tr> <td>S-23</td> <td>520-1 505 (600-1)</td> <td>520-1½ 505 (600-1½)</td> <td></td> <td></td> </tr> <tr> <td>CIRCLING</td> <td>560-1 545 (600-1)</td> <td>560-1½ 545 (600-1½)</td> <td>620-2 605 (700-2)</td> <td></td> </tr> </tbody> </table>	CATEGORY	A	B	C	D	S-23	520-1 505 (600-1)	520-1½ 505 (600-1½)			CIRCLING	560-1 545 (600-1)	560-1½ 545 (600-1½)	620-2 605 (700-2)		<p>REIL Rwy 5-23</p> <p>HIRL Rwy 5-23</p>
CATEGORY	A	B	C	D												
S-23	520-1 505 (600-1)	520-1½ 505 (600-1½)														
CIRCLING	560-1 545 (600-1)	560-1½ 545 (600-1½)	620-2 605 (700-2)													

MAYPORT, FLORIDA

30°23'N-81°25'W MAYPORT NS (ADM DAVID L. MC DONALD FLD) (KNRB)

Amtd 6 05SEP24

TACAN Y RWY 23

SE-3, 28 NOV 2024 to 26 DEC 2024

SE-3, 28 NOV 2024 to 26 DEC 2024