

TACAN Y RWY 5

TACAN NRB Chan 51	APCH CRS 055°	Rwy Ldg TDZE Arpt Elev 8001 12 15
-----------------------------	-------------------------	---

[USN] MAYPORT NS (ADM DAVID L. MC DONALD FLD) (KNRB)

▽ MISSED APPROACH: Climb to 500. Then climbing right turn to 3000 via NRB TACAN R-081 to BENG and hold, continue climb in hold to 3000.

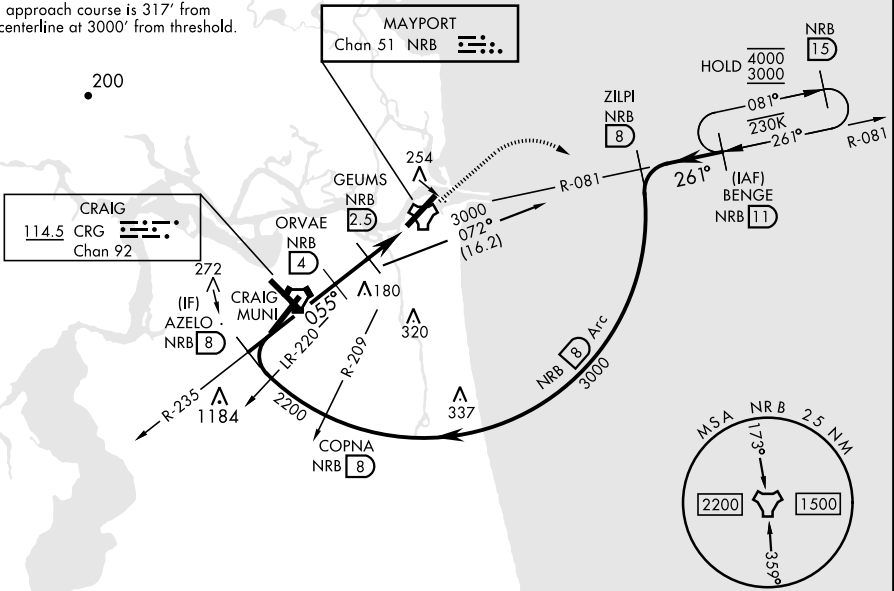
ATIS ★ 236.775	JACKSONVILLE APP CON 124.9 308.4	TOWER ★ 118.75 239.30	GND CON 126.5 233.7	ASR/PAR
--------------------------	--	---------------------------------	-------------------------------	---------

CAUTION: Circling not authorized to Rwy 23 at night when VGS1 inop on Rwy 23, unless the station has an approved observer watching for marine traffic in the St. John's River channel.

CAUTION: Intmed seg len 4 NM.

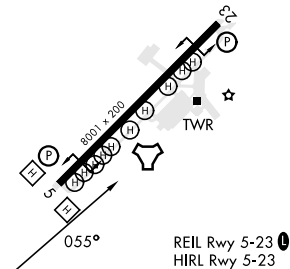
CRG feeder requires turn in hold.

Final approach course is 317' from rwy centerline at 3000' from threshold.



EMERG SAFE ALT 100 NM 2800

	ELEV 15		TDZE 12	
CATEGORY	A	B	C	D
S-5	440-1	428 (500-1)	440-1¼	428 (500-1¼)
CIRCLING	560-1	545 (600-1)	560-1½	620-2 605 (700-2)



SE-3, 28 NOV 2024 to 26 DEC 2024

SE-3, 28 NOV 2024 to 26 DEC 2024

TACAN Y RWY 5