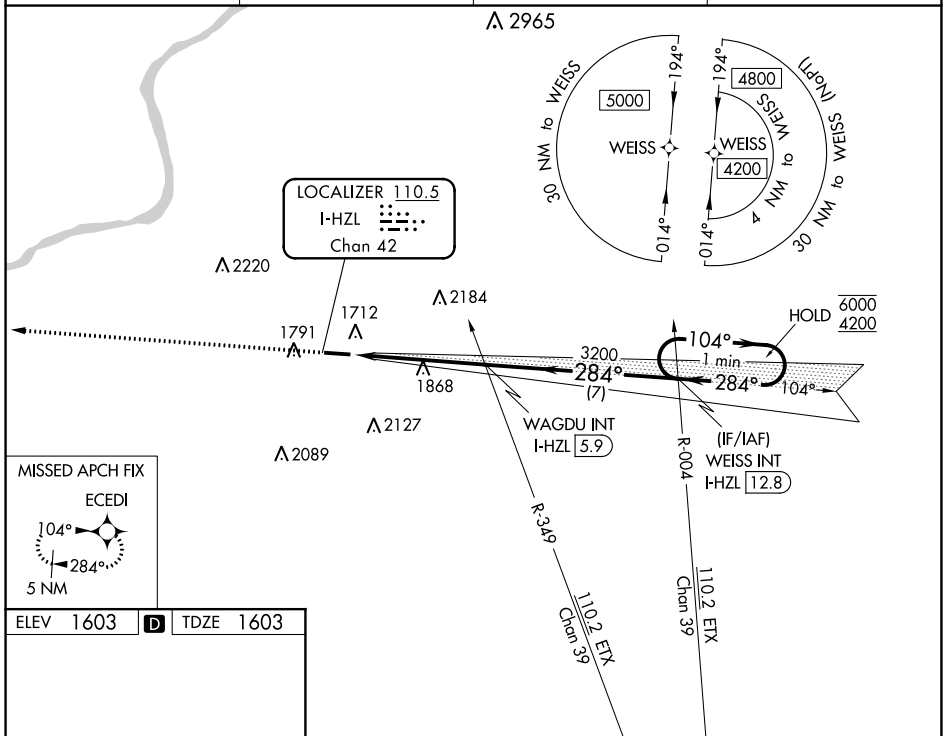


LOC/DME I-HZL <b>110.5</b> Chan <b>42</b>	APP CRS <b>284°</b>	Rwy Idg <b>4898</b> TDZE <b>1603</b> Apt Elev <b>1603</b>
---	------------------------	---

**LOC RWY 28**  
HAZLETON RGNL (HZL)

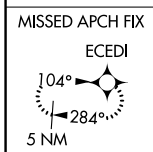
RNAV 1-GPS required for procedure entry. RNAV 1-GPS required from MAP to ECEDI.	MALS ☉	MISSED APPROACH: Climb to 4400 direct ECEDI and hold.
▼ ▲ NA Rwy 28 helicopter visibility reduction below 3/4 SM NA. Inop table does not apply to Cats A/B. For inop ALS, increase Cat C/D visibility to 1 1/8 SM.		

AWOS-3 <b>119.975</b>	WILKES-BARRE APP CON <b>126.3 256.7</b>	CLNC DEL <b>121.7</b>	UNICOM <b>123.0 (CTAF)</b> 📻
--------------------------	--	--------------------------	---------------------------------

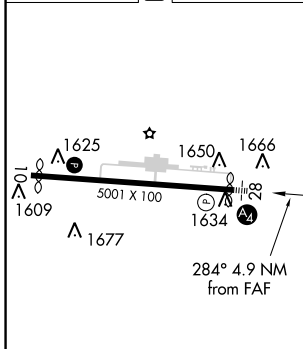


NE-4, 28 NOV 2024 to 26 DEC 2024

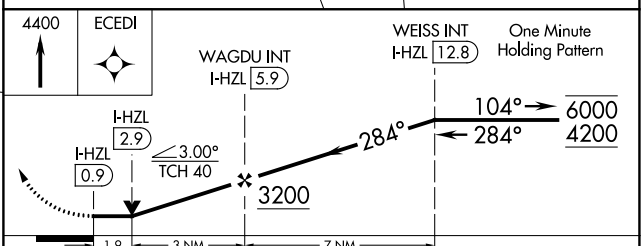
NE-4, 28 NOV 2024 to 26 DEC 2024



ELEV <b>1603</b> <b>D</b>	TDZE <b>1603</b>
---------------------------	------------------



REIL Rwy 10 📻	MIRL Rwy 10-28 📻				
FAF to MAP 4.9 NM					
Knots	60	90	120	150	180
Min:Sec	4:54	3:16	2:27	1:58	1:38



CATEGORY	A	B	C	D
S-LOC 28	2280-1	677 (700-1)	2280-1 3/4	677 (700-1 3/4)
<b>C</b> CIRCLING	2280-1 677 (700-1)	2400-1 797 (800-1)	2480-2 1/2 877 (900-2 1/2)	2520-3 917 (1000-3)