

WAAS CH 86240 W10A	APP CRS 104°	Rwy Idg TDZE Apt Elev	4801 1603 1603
--	------------------------	-----------------------------	---

RNAV (GPS) RWY 10

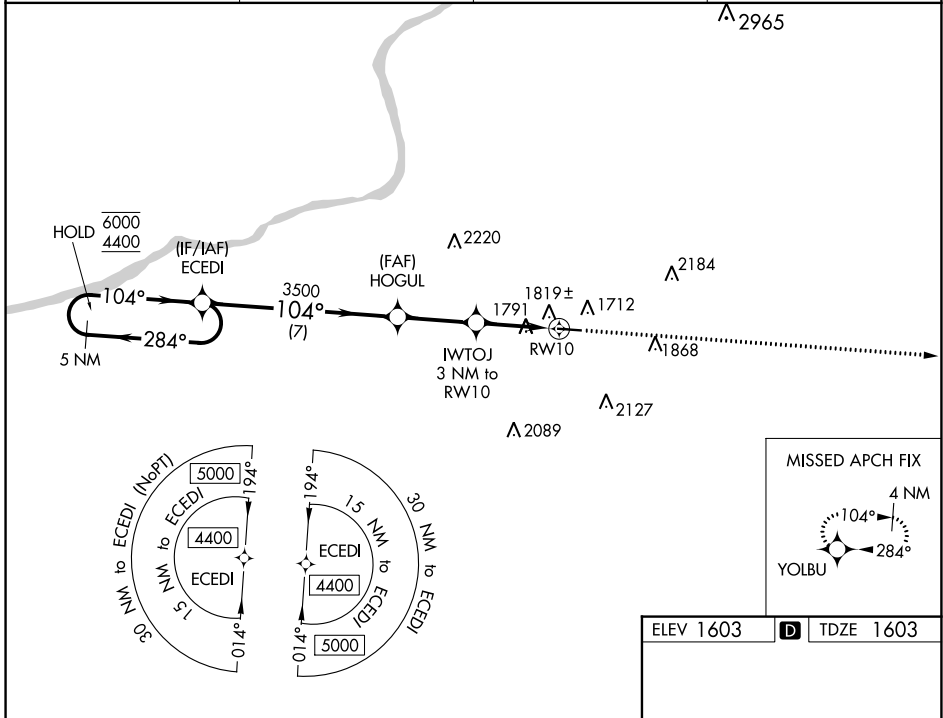
HAZLETON RGNL (HZL)

RNP APCH.

▽ **▲** Rwy 10 helicopter visibility reduction below $\frac{3}{4}$ SM NA. For uncompensated Baro-VNAV systems, LNAV/VNAV NA below -18°C or above 54°C.

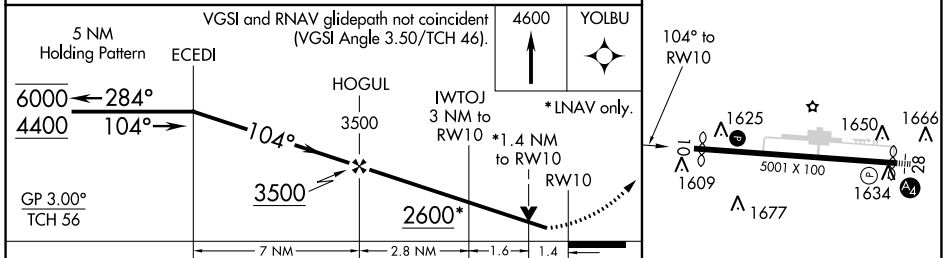
MISSED APPROACH:
Climb to 4600 direct YOLBU and hold.

AWOS-3 119.975	WILKES-BARRE APP CON 126.3 256.7	CLNC DEL 121.7	UNICOM 123.0 (CTAF) 0
--------------------------	--	--------------------------	---------------------------------



NE-4, 28 NOV 2024 to 26 DEC 2024

NE-4, 28 NOV 2024 to 26 DEC 2024



CATEGORY	A	B	C	D
LPV DA		2059-1 $\frac{3}{8}$	456 (500-1 $\frac{3}{8}$)	
LNAV/VNAV DA		2097-1 $\frac{3}{8}$	494 (500-1 $\frac{3}{8}$)	
LNAV MDA	2080-1	477 (500-1)	2080-1 $\frac{3}{8}$	477 (500-1 $\frac{3}{8}$)
C CIRCLING	2140-1 537 (600-1)	2400-1 797 (800-1)	2480-2 $\frac{1}{2}$ 877 (900-2 $\frac{1}{2}$)	2520-3 917 (1000-3)

ELEV 1603 **D** TDZE 1603

Distances: 100, 1609, 1625, 5001 X 100, 1650, 1666, 1634, 1677

REIL Rwy 10 **0**
MIRL Rwy 10-28 **0**