

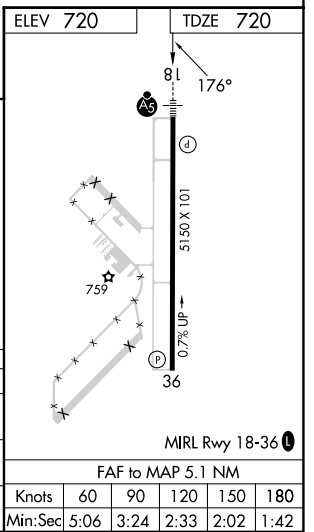
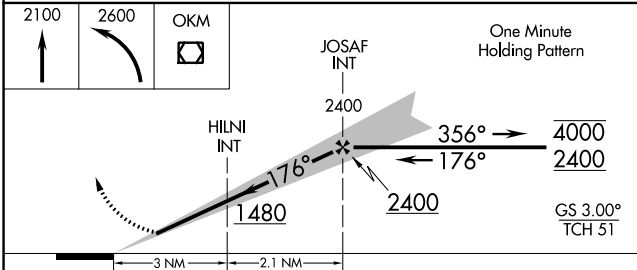
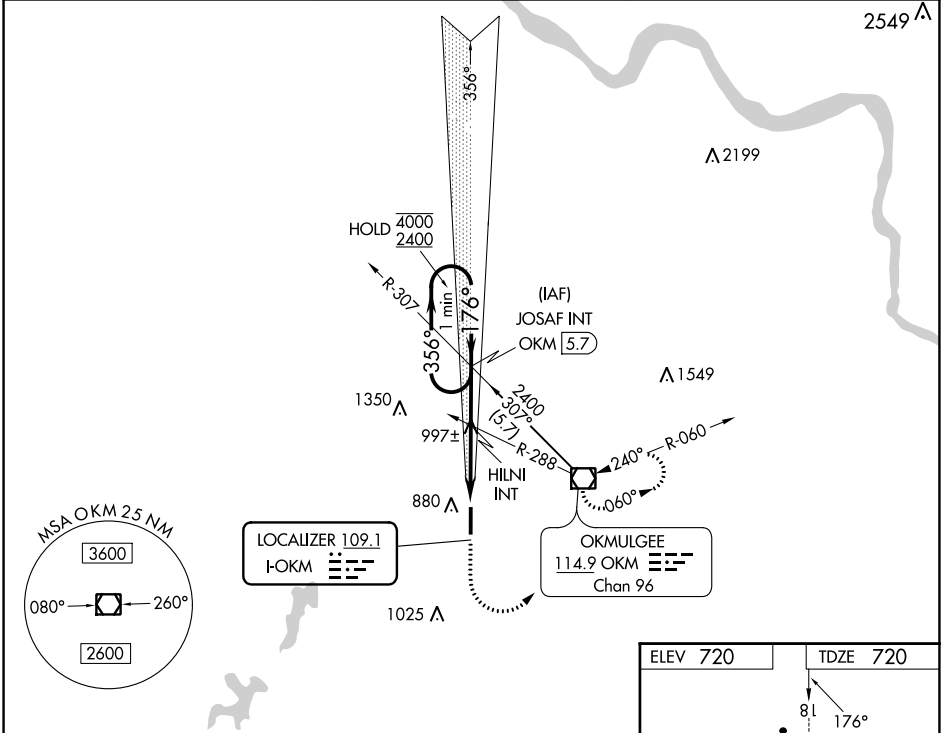
LOC I-OKM <b>109.1</b>	APP CRS <b>176°</b>	Rwy ldg <b>5150</b> TDZE <b>720</b> Apt Elev <b>720</b>
---------------------------	------------------------	--

# ILS or LOC RWY 18

OKMULGEE RGNL/PAUL AND BETTY ABBOTT FLD (OKM)

<b>▼</b> <b>▲ NA</b>	For inop ALS, increase S-ILS all Cats visibility to ¾ SM, increase S-LOC Cats A and B visibility to 1 SM, and S-LOC Cat C visibility to 1½ SM.	MALSR 	MISSED APPROACH: Climb to 2100 then climbing left turn to 2600 direct OKM VOR/DME and hold, continue climb-in-hold to 2600.
-------------------------	--	-----------	---

AWOS-3PT <b>118.225</b>	TULSA APP CON <b>119.85 338.3</b>	UNICOM <b>123.0 (CTAF)</b>
----------------------------	--------------------------------------	-------------------------------



CATEGORY	A	B	C	D
S-ILS 18	920-½	200 (200-½)		NA
S-LOC 18	1260-½	540 (600-½)	1260-1 540 (600-1)	NA
<b>C</b> CIRCLING	1320-1 600 (600-1)	1340-1 620 (700-1)	1340-1¾ 620 (700-1¾)	NA

FAF to MAP 5.1 NM					
Knots	60	90	120	150	180
Min:Sec	5:06	3:24	2:33	2:02	1:42

SC-1, 28 NOV 2024 to 26 DEC 2024

SC-1, 28 NOV 2024 to 26 DEC 2024