

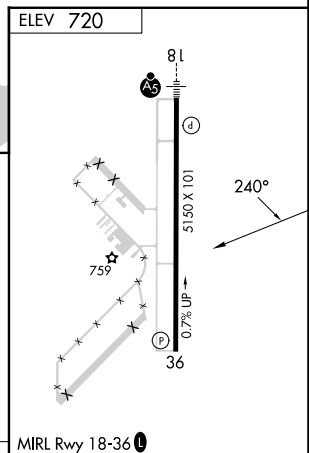
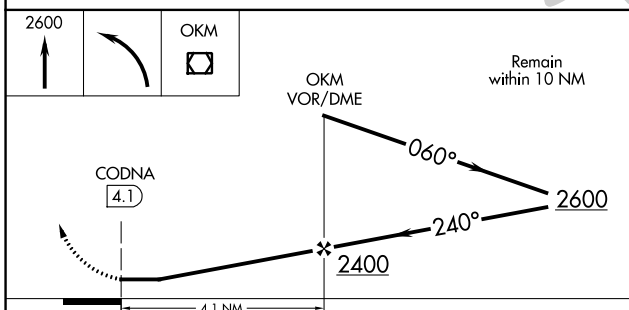
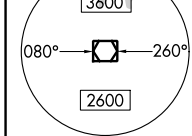
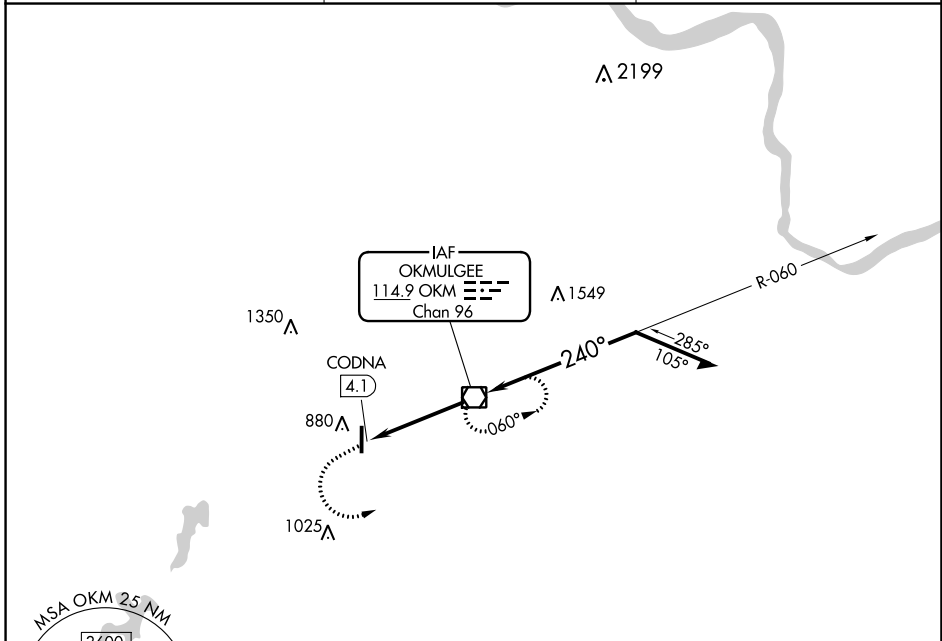
VOR/DME OKM 114.9 Chan 96	APP CRS 240°	Rwy Idg TDZE Apt Elev	N/A N/A 720
---	------------------------	-----------------------------	--

VOR-A
OKMULGEE RGNL/PAUL AND BETTY ABBOTT FLD (OKM)

NA When local altimeter setting not received, use Tulsa Intl altimeter setting: Increase all MDAs 80 feet and visibility Cat C ¼ SM.

MISSED APPROACH: Climb to 2600 then left turn direct OKM VOR/DME and hold.

AWOS-3PT 118.225	TULSA APP CON 119.85 338.3	UNICOM 123.0 (CTAF) 0
----------------------------	--------------------------------------	---------------------------------



CATEGORY	A	B	C	D	FAF to MAP 4.1 NM					
CIRCLING	1240-1 520 (600-1)	1340-1 620 (700-1)	1340-1¾ 620 (700-1¾)	NA	Knots	60	90	120	150	180
					Min:Sec	4:06	2:44	2:03	1:38	1:22

SC-1, 28 NOV 2024 to 26 DEC 2024

SC-1, 28 NOV 2024 to 26 DEC 2024