

JACKSONVILLE, NORTH CAROLINA

# RNAV (GPS) RWY 1

APCH CRS	Rwy ldg	4789
008°	THRE	24
	Arprt Elev	26

[USN]

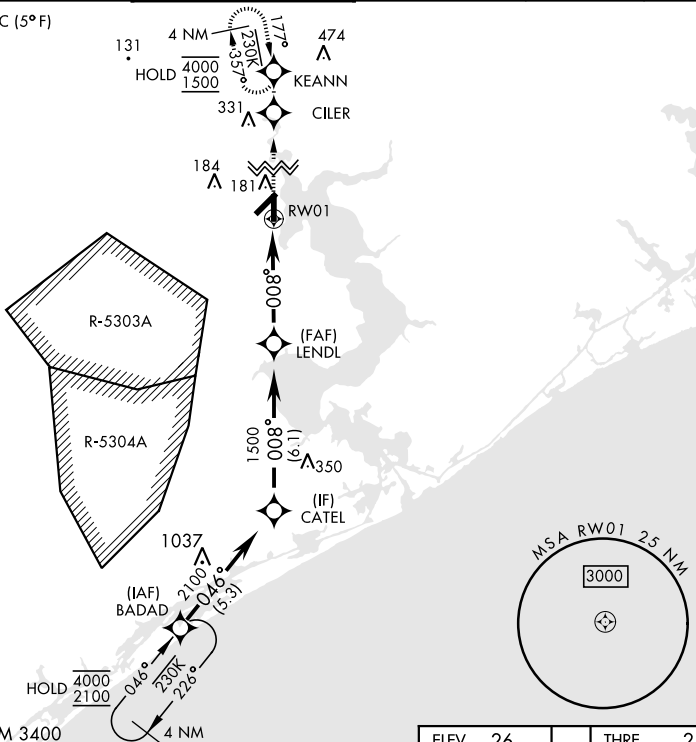
NEW RIVER MCAS (MC CUTCHEON FLD)(KNCA)

RNP APCH
RADAR required
*When ALS inop, increase vis to 7/8 mile.
**When ALS inop, increase vis CAT AB to 1 mile, CAT CD to 1 1/8 miles.

SALSF	MISSED APPROACH: Climb to 1500 direct CILER, 008° track to KEANN and hold.
-------	--

ATIS ★	CHERRY POINT APP CON	TOWER ★	GND CON	CLNC DEL	ASR/PAR
288.325	119.35 377.175	134.95(CTAF) 0★ 360.2	121.8 254.275	269.25	

Baro VNAV NA below -15°C (5°F) and above 54°C (129°F).



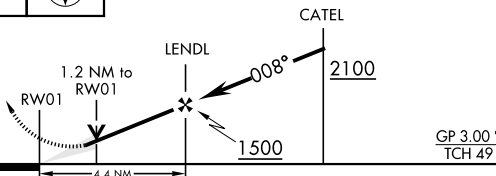
SE-2, 28 NOV 2024 to 26 DEC 2024

SE-2, 28 NOV 2024 to 26 DEC 2024

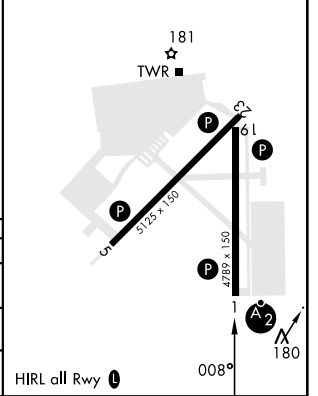
EMERG SAFE ALT 100 NM 3400

1500	CILER	KEANN
↑	◆	⊕

VGSI and descent angles not coincident (VGSI Angle 3.00/TCH 46)



ELEV	26	THRE	24
------	----	------	----



CATEGORY	A	B	C	D
LNNAV/ VNAV DA *	311-3/4	322-3/4	330-3/4	341-3/4
	287 (300-3/4)	298 (300-3/4)	306 (400-3/4)	317 (400-3/4)
LNNAV MDA **	440-3/4	416 (500-3/4)	440-1	416 (500-1)
CIRCLING	500-1	474 (500-1)	700-2 674 (700-2)	700-2 1/4 674 (700-2 1/4)

HIRL all Rwy 0

JACKSONVILLE, NORTH CAROLINA

34° 43' N-77° 26' W

NEW RIVER MCAS (MC CUTCHEON FLD)(KNCA)

Amdt 5 28DEC23

# RNAV (GPS) RWY 1