

JACKSONVILLE, NORTH CAROLINA

RNAV (GPS) RWY 19

APCH CRS	Rwy Idg	4789
188°	TDZE	23
	Arpt Elev	26

[USN] NEW RIVER MCAS (MC CUTCHEON FLD)(KNCA)

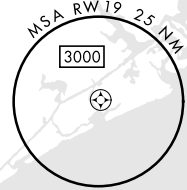
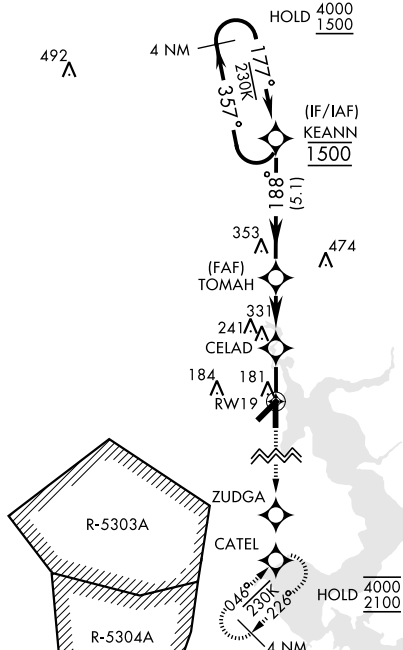
RNP APCH
RADAR required

MISSED APPROACH: Climb to 2100 direct ZUDGA, direct CATEL and hold.

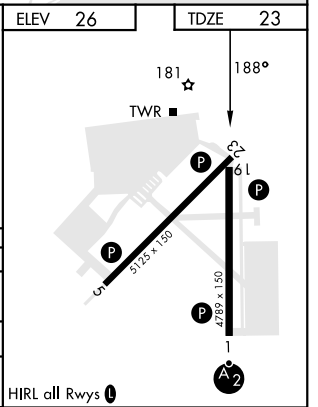
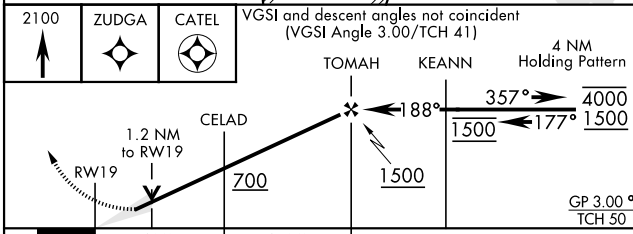
ATIS ★	CHERRY POINT APP CON	TOWER ★	GND CON	CLNC DEL	ASR/PAR
288.325	119.35 377.175	134.95(CTAF) 0★ 360.2	121.8 254.275	269.25	

*154

Baro VNAV NA below -15°C (5°F) and above 54°C (129°F).



EMERG SAFE ALT 100 NM 3400



CATEGORY	A	B	C	D
LNAV/VNAV DA	313-7/8 290 (300-7/8)	323-7/8 300 (300-7/8)	331-7/8 308 (400-7/8)	342-7/8 319 (400-7/8)
LNAV MDA	440-1	417 (500-1)	440-1 1/8	417 (500-1 1/8)
CIRCLING	500-1	474 (500-1)	700-2 674 (700-2)	700-2 1/4 674 (700-2 1/4)

HIRL all Rwy's 0

JACKSONVILLE, NORTH CAROLINA
Amdt 5 28DEC23

34° 43' N-77° 26' W NEW RIVER MCAS (MC CUTCHEON FLD)(KNCA)

RNAV (GPS) RWY 19

SE-2, 28 NOV 2024 to 26 DEC 2024

SE-2, 28 NOV 2024 to 26 DEC 2024