

MARY ESTHER, FLORIDA

RNAV (GPS) RWY 18

SBAS Chan 57304 W18A	APCH CRS 179°	Rwy ldg TDZE Arpt Elev 9600 35 38
--	-------------------------	---

[USAF]

HURLBURT FLD (KHRT)

RNP APCH

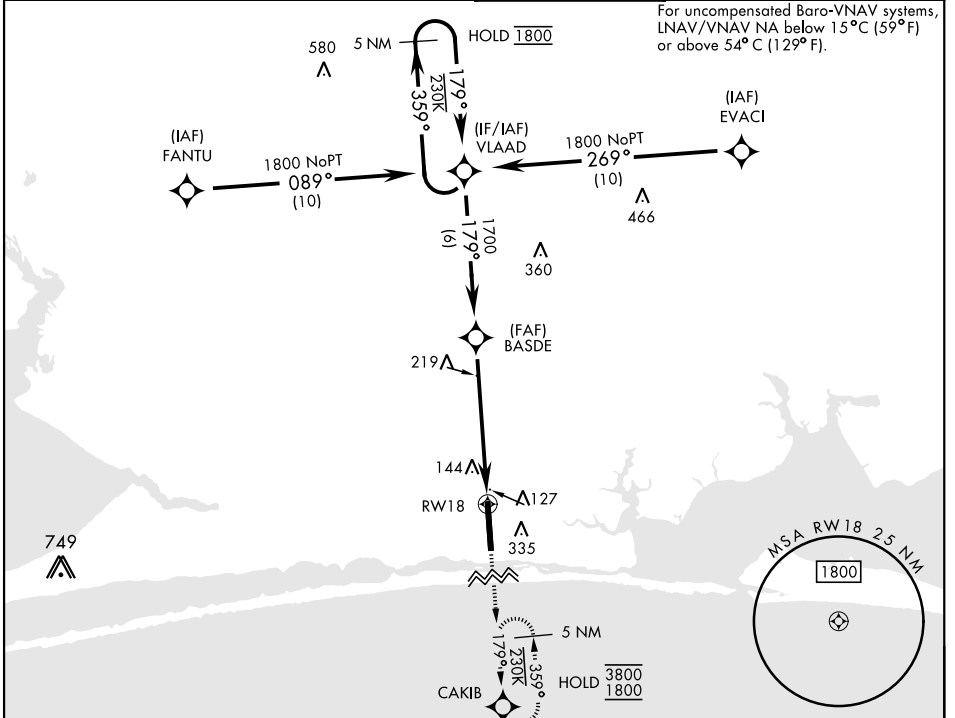


MISSED APPROACH: Climb to 1800 direct CAKIB and hold.

▼ *When ALS inop, increase vis to 1½ miles.
**When ALS inop, increase CAT AB vis to 1 mile; CAT CDE vis to 1½ miles.

ATIS 134.475 360.675	EGLIN APP CON 125.1 281.45 (271°- 089°) 132.1 360.6 (090°- 270°)	TOWER 126.5 351.675	GND CON 123.975 275.8
--------------------------------	--	-------------------------------	---------------------------------

For uncompensated Baro-VNAV systems, LNAV/VNAV NA below 15°C (59°F) or above 54°C (129°F).

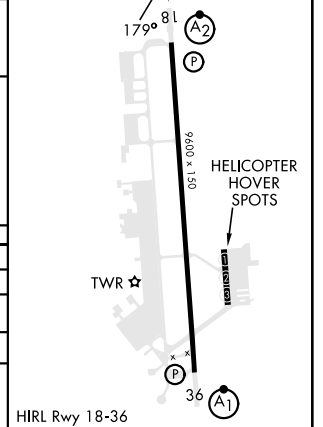
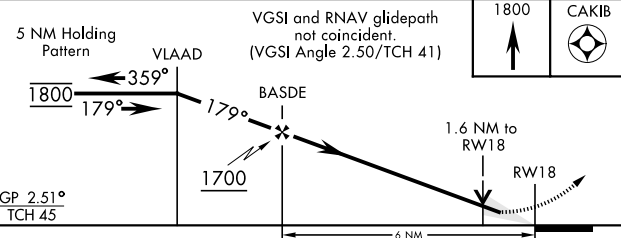


SE-3, 28 NOV 2024 to 26 DEC 2024

SE-3, 28 NOV 2024 to 26 DEC 2024

EMERG SAFE ALT 100 NM 3700

ELEV	38	TDZE	35
------	----	------	----



CATEGORY	A	B	C	D	E
LPV DA	285-¾		250	(300-¾)	
LNAV/VNAV DA*	427-7/8		392	(400-7/8)	
LNAV MDA**	500-¾	465 (500-¾)	500-1/8	465	(500-1/8)
CIRCLING	640-1	602 (700-1)	640-1¾ 602 (700-1¾)	840-2½ 802 (900-2½)	840-2¾ 802 (900-2¾)

HIRL Rwy 18-36

MARY ESTHER, FLORIDA
Amdt 2 14JUL22

30° 26' N-86° 41' W

HURLBURT FLD (KHRT)

RNAV (GPS) RWY 18