

PENSACOLA, FLORIDA

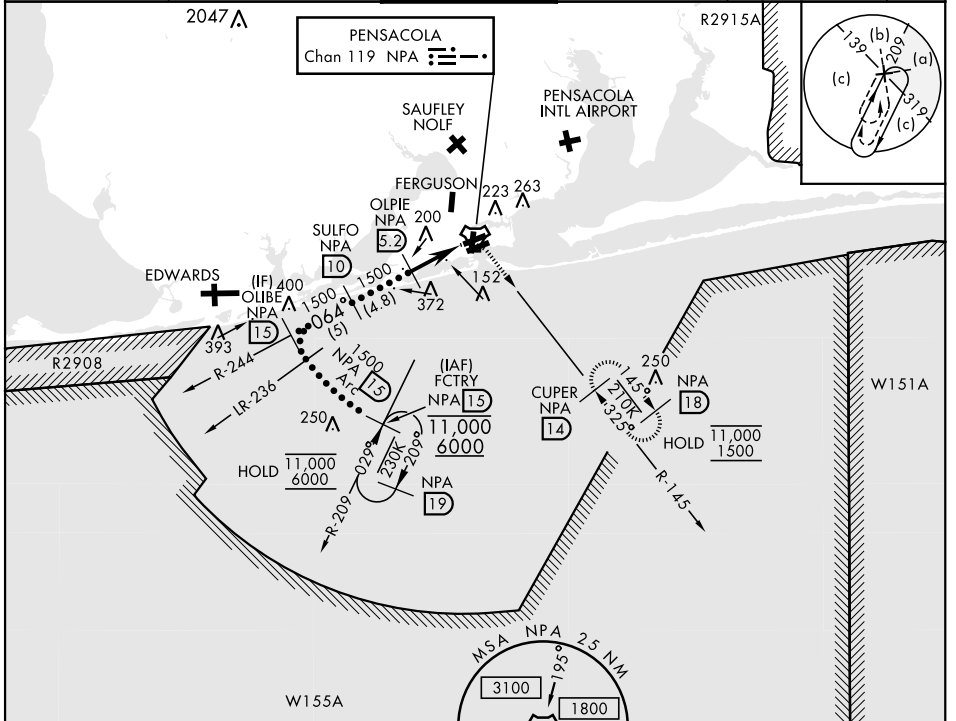
HI-TACAN Z RWY 7L

TACAN NPA Chan 119	APCH CRS 064°	Rwy ldg TDZE Arprt Elev 8001 23 28
------------------------------	-------------------------	--

AL-736 [USN] PENSACOLA NAS (FORREST SHERMAN FLD) (KNPA)

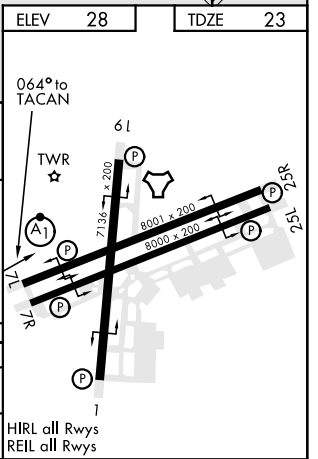
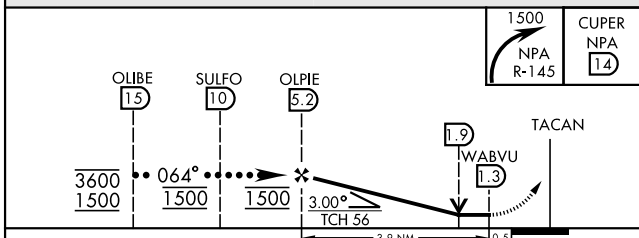
RADAR required. * When ALS inop, increase vis to 1 1/2 miles.	ALSF-1 	MISSED APPROACH: Climbing right turn to 1500 via NPA TACAN R-145 to CUPER and hold.
--	------------	---

ATIS 124.35 266.8	PENSACOLA APP CON 120.65 270.8	SHERMAN TOWER 120.7 340.2	GND CON 121.7 336.4	CLNC DEL 134.1 268.7	ASR/ PAR
-----------------------------	--	-------------------------------------	-------------------------------	--------------------------------	-------------



ELEV	28	TDZE	23
------	----	------	----

EMERG SAFE ALT 100 NM 3100



CATEGORY	C	D	E
S-7L *	440-3/4	417 (500-3/4)	
CIRCLING	540-1 1/2 512 (600-1 1/2)	580-2	552 (600-2)

PENSACOLA, FLORIDA 30°21'N-87°19'W PENSACOLA NAS (FORREST SHERMAN FLD) (KNPA)

Orig 02DEC21

HI-TACAN Z RWY 7L

SE-3, 28 NOV 2024 to 26 DEC 2024

SE-3, 28 NOV 2024 to 26 DEC 2024