

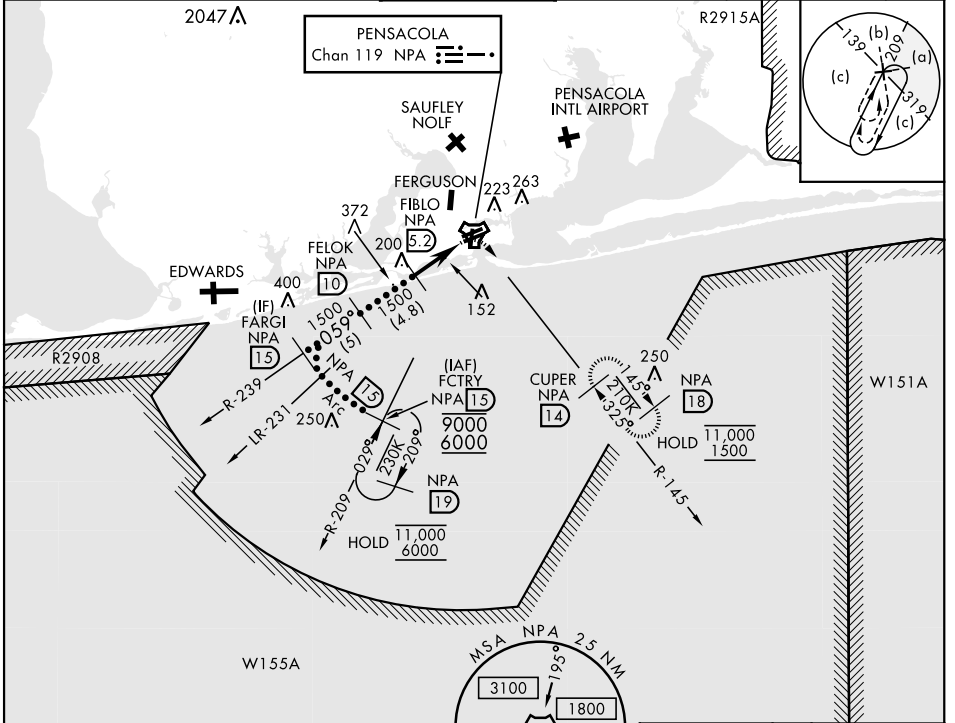
PENSACOLA, FLORIDA

HI-TACAN Z RWY 7R

TACAN NPA Chan 119	APCH CRS 059°	Rwy Idg TDZE Arpt Elev	8000 25 28	AL-736 [USN]	PENSACOLA NAS (FORREST SHERMAN FLD) (KNPA)
-----------------------	------------------	------------------------------	------------------	--------------	--

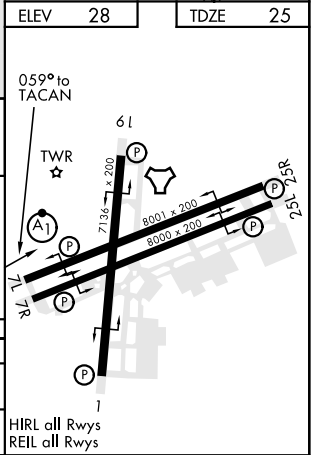
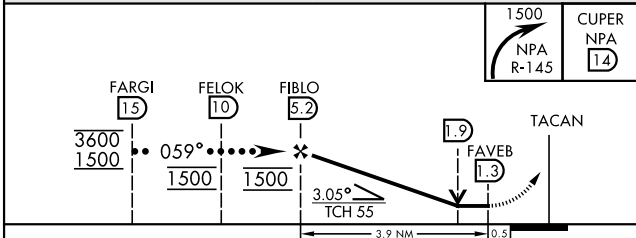
RADAR required.	MISSED APPROACH: Climbing right turn to 1500 via NPA TACAN R-145 to CUPER and hold.
-----------------	---

ATIS 124.35 266.8	PENSACOLA APP CON 120.65 270.8	SHERMAN TOWER 120.7 340.2	GND CON 121.7 336.4	CLNC DEL 134.1 268.7	ASR/ PAR
----------------------	-----------------------------------	------------------------------	------------------------	-------------------------	-------------



ELEV	28	TDZE	25
------	----	------	----

EMERG SAFE ALT 100 NM 3100



CATEGORY	C	D	E
S-7R	440-1 1/8	415 (500-1 1/8)	
CIRCLING	540-1 1/2 512 (600-1 1/2)	580-2	552 (600-2)

PENSACOLA, FLORIDA 30°21'N-87°19'W PENSACOLA NAS (FORREST SHERMAN FLD) (KNPA)

Orig 02DEC21

HI-TACAN Z RWY 7R

SE-3, 28 NOV 2024 to 26 DEC 2024

SE-3, 28 NOV 2024 to 26 DEC 2024