

HI-VOR Z RWY 19

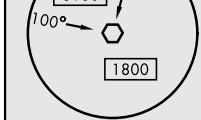
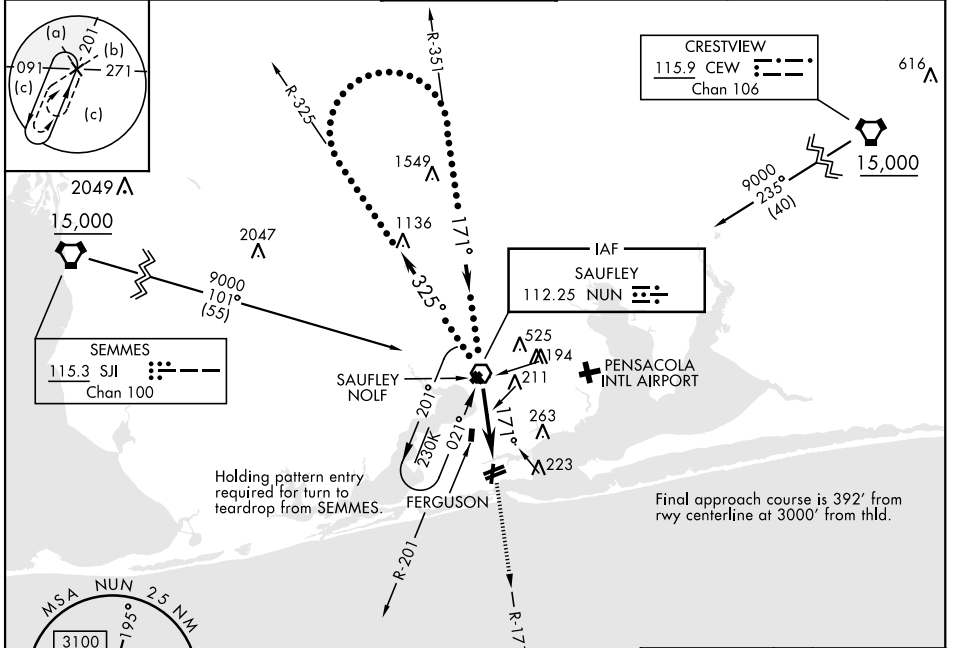
VOR NUN 112.25	APCH CRS 171°	Rwy Ldg 7136 TDZE 22 Arpt Elev 28	AL-736 [USN] PENSACOLA NAS (FORREST SHERMAN FLD) (KNPA)
--------------------------	-------------------------	--	---

RADAR required.

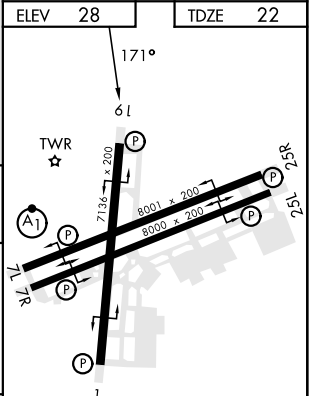
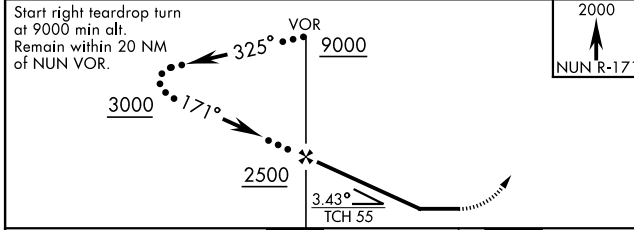
Procedure not available when Pensacola South Military Operating Area (MOA) is active.

MISSED APPROACH: Climb to 2000 via NUN VOR R-171. Expect RADAR vectors within 3 NM of MAP.

ATIS 124.35 266.8	PENSACOLA APP CON 120.65 270.8	SHERMAN TOWER 120.7 340.2	GND CON 121.7 336.4	CLNC DEL 134.1 268.7	ASR/ PAR
-----------------------------	--	-------------------------------------	-------------------------------	--------------------------------	-------------



EMERG SAFE ALT 100 NM 3100



CATEGORY	C	D	E
S-19	500-1 $\frac{1}{8}$	478 (500-1 $\frac{1}{8}$)	
CIRCLING	540-1 $\frac{1}{2}$ 512 (600-1 $\frac{1}{2}$)	580-2	552 (600-2)

HIRL all Rwys
REIL all Rwys

FAF to MAP 6.0 NM					
Knots	120	140	160	180	200
Min:Sec	3:00	2:34	2:15	2:00	1:48

HI-VOR Z RWY 19

SE-3, 28 NOV 2024 to 26 DEC 2024

SE-3, 28 NOV 2024 to 26 DEC 2024