

PENSACOLA, FLORIDA

RNAV (GPS) RWY 1

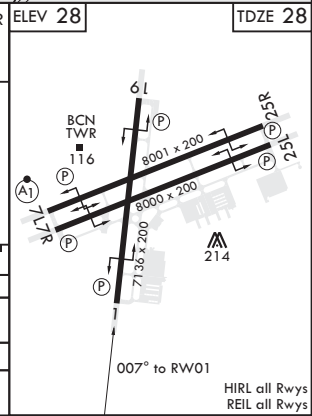
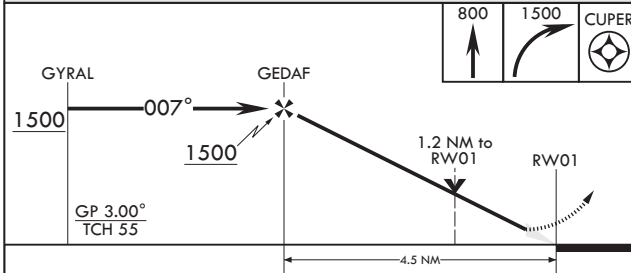
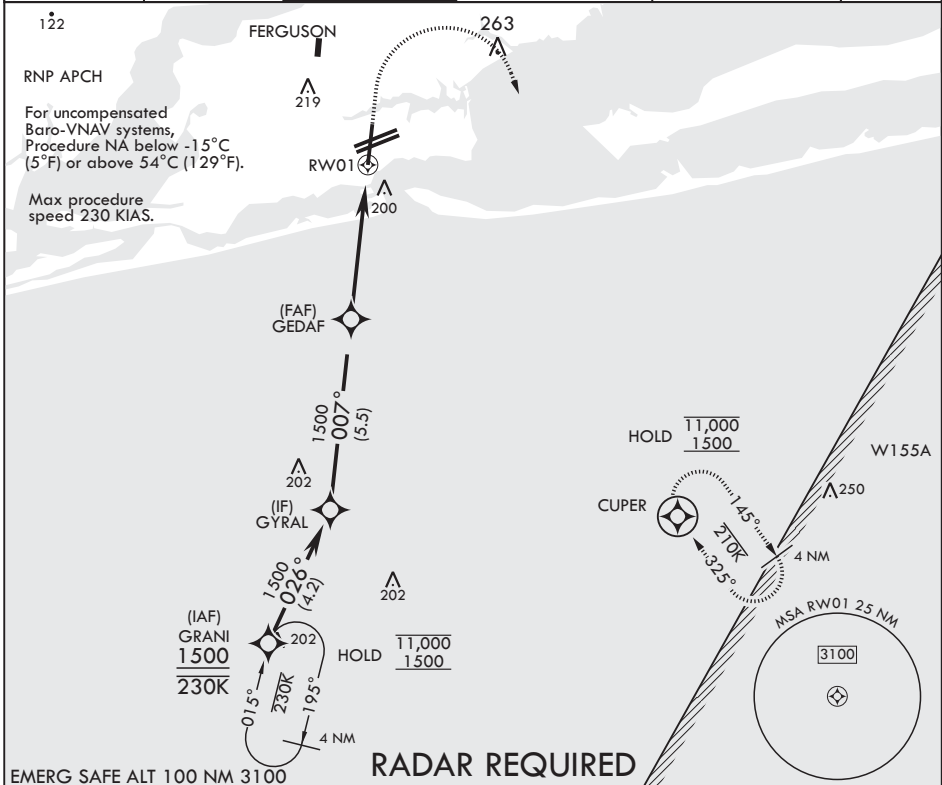
APCH CRS	Rwy Idg	7136
007°	TDZE	28
	Arprt Elev	28

AL-736 (USN)

PENSACOLA NAS (FORREST SHERMAN FLD) (KNPA)

MISSED APPROACH: Climb to 800 then climbing right turn to 1500 direct CUPER and hold.

ATIS 124.35 266.8	APP CON 120.65 270.8	SHERMAN TOWER 120.7 340.2	SHERMAN GND CON 121.7 336.4	SHERMAN CLNC DEL 134.1 268.7	ASR/PAR
----------------------	-------------------------	------------------------------	--------------------------------	---------------------------------	---------



CATEGORY	A	B	C	D
LNAV/VNAV DA	331-7/8 303 (400-7/8)	342-7/8 314 (400-7/8)	350-1 322 (400-1)	361-1 333 (400-1)
LNAV MDA	460-1	432 (500-1)	460-1 1/4	432 (500-1 1/4)
C CIRCLING	520-1	492 (500-1)	540-1 1/2 512 (600-1 1/2)	580-2 552 (600-2)

PENSACOLA, FLORIDA

30°21'N - 87°19'W PENSACOLA NAS (FORREST SHERMAN FLD) (KNPA)

Amdt 4 02DEC21

RNAV (GPS) RWY 1

SE-3, 28 NOV 2024 to 26 DEC 2024

SE-3, 28 NOV 2024 to 26 DEC 2024