

PENSACOLA, FLORIDA

RNAV (GPS) RWY 19

AL-736 (USN)

PENSACOLA NAS (FORREST SHERMAN FLD) (KNPA)

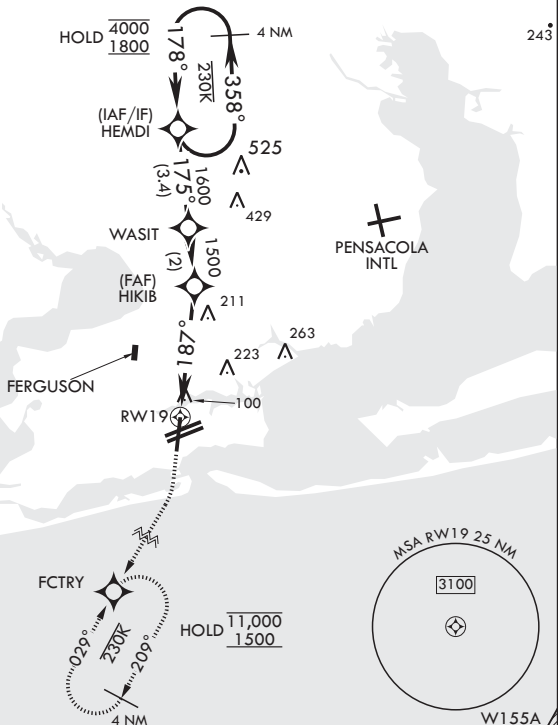
APCH CRS 187°	Rwy Idg 7136
	TDZE 22
	Arpt Elev 28

MISSED APPROACH: Climb to 800 then climbing right turn to 1500 direct FCTRY and hold.

ATIS 124.35 266.8	APP CON 120.65 270.8	SHERMAN TOWER 120.7 340.2	SHERMAN GND CON 121.7 336.4	SHERMAN CLNC DEL 134.1 268.7	ASR/PAR
-----------------------------	--------------------------------	-------------------------------------	---------------------------------------	--	---------

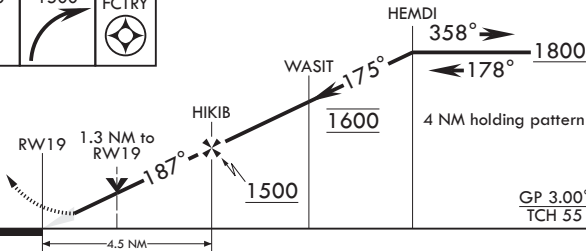
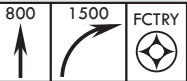
RNP APCH

For uncompensated Baro-VNAV systems, Procedure NA below -15°C (5°F) or above 54°C (129°F).

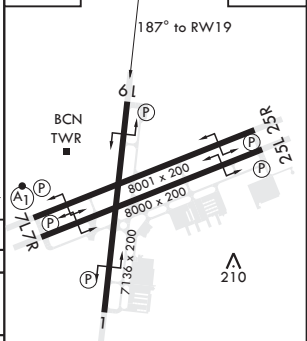


RADAR REQUIRED

EMERG SAFE ALT 100 NM 3100



ELEV 28 TDZE 22



CATEGORY	A	B	C	D	E
LNAV/VNAV DA	281-¾ 259 (300-¾)	292-⅞ 270 (300-⅞)	300-⅞ 278 (300-⅞)	311-⅞	289 (300-⅞)
LNAV MDA	500-1	478 (500-1)	500-1½	478	(500-1½)
C CIRCLING	520-1	492 (500-1)	540-1½ 512 (600-1½)	580-2	552 (600-2)

HIRL all Rwys
REIL all Rwys

PENSACOLA, FLORIDA

30°21'N - 87°19'W PENSACOLA NAS (FORREST SHERMAN FLD) (KNPA)

Amdt 5 02DEC21

RNAV (GPS) RWY 19

SE-3, 28 NOV 2024 to 26 DEC 2024

SE-3, 28 NOV 2024 to 26 DEC 2024