

PENSACOLA, FLORIDA

# RNAV (GPS) RWY 25R

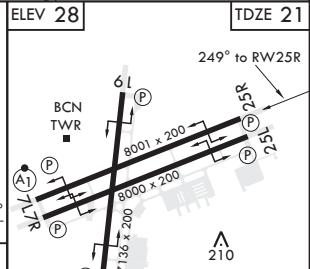
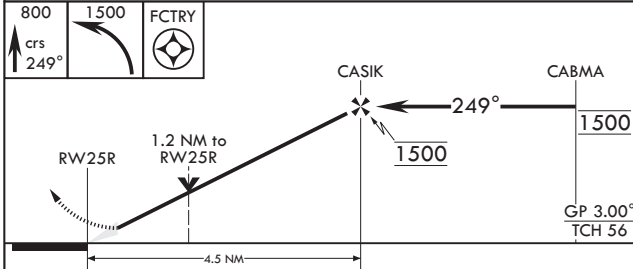
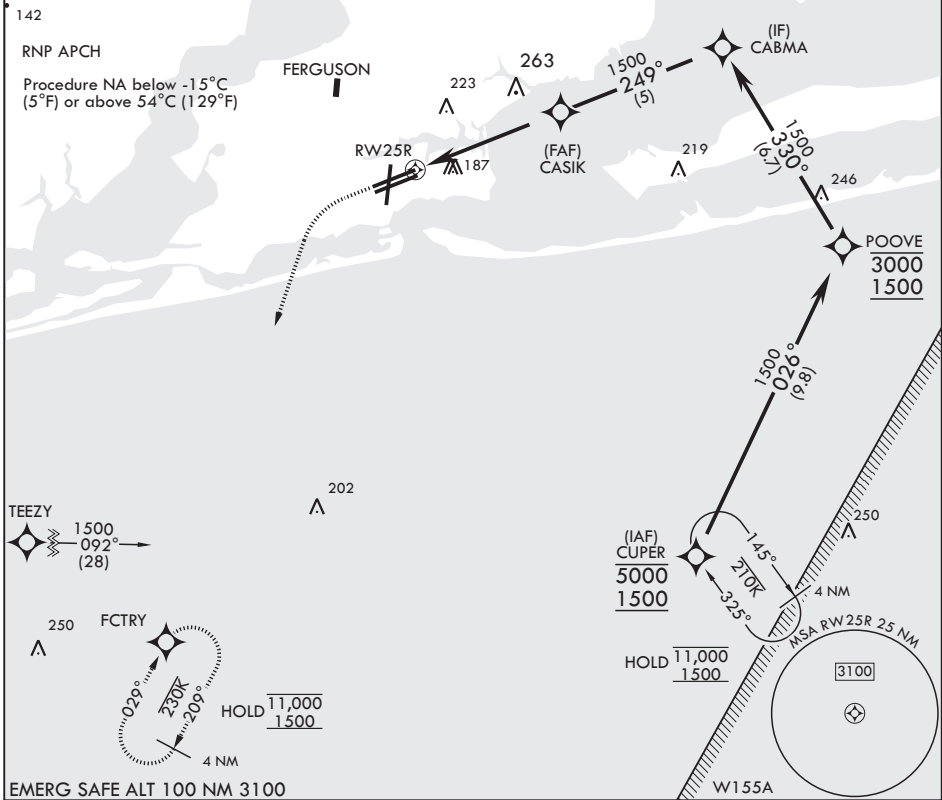
APCH CRS 249°	Rwy Idg 8001
	TDZE 21
	Arpt Elev 28

AL-736 (USN)

PENSACOLA NAS (FORREST SHERMAN FLD) (KNPA)

MISSED APPROACH: Climb to 800 then climbing left turn to 1500 direct FCTRY and hold.

ATIS 124.35 266.8	APP CON 120.65 270.8	SHERMAN TOWER 120.7 340.2	SHERMAN GND CON 121.7 336.4	SHERMAN CLNC DEL 134.1 268.7	ASR/PAR
----------------------	-------------------------	------------------------------	--------------------------------	---------------------------------	---------



CATEGORY	A	B	C	D
LNAV/VNAV DA	440-1 $\frac{1}{8}$		419	(500-1 $\frac{1}{8}$ )
LNAV MDA	440-1	419 (500-1)	440-1 $\frac{1}{8}$	419 (500-1 $\frac{1}{8}$ )
CIRCLING	520-1	492 (500-1)	540-1 $\frac{1}{2}$ 512 (600-1 $\frac{1}{2}$ )	580-2 552 (600-2)

PENSACOLA, FLORIDA

30°21'N - 87°19'W PENSACOLA NAS (FORREST SHERMAN FLD) (KNPA)

Amdt 7 02DEC21

# RNAV (GPS) RWY 25R

SE-3, 28 NOV 2024 to 26 DEC 2024

SE-3, 28 NOV 2024 to 26 DEC 2024

HIRL all Rwys  
REIL all Rwys