

PENSACOLA, FLORIDA

# TACAN Y RWY 1

TACAN NPA Chan <b>119</b>	APCH CRS <b>015°</b>	Rwy Idg TDZE Arprt Elev <b>7136</b> <b>28</b> <b>28</b>
------------------------------	-------------------------	--

AL-736 [USN]

PENSACOLA NAS (FORREST SHERMAN FLD) (KNPA)

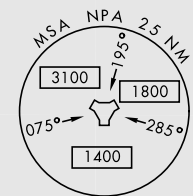
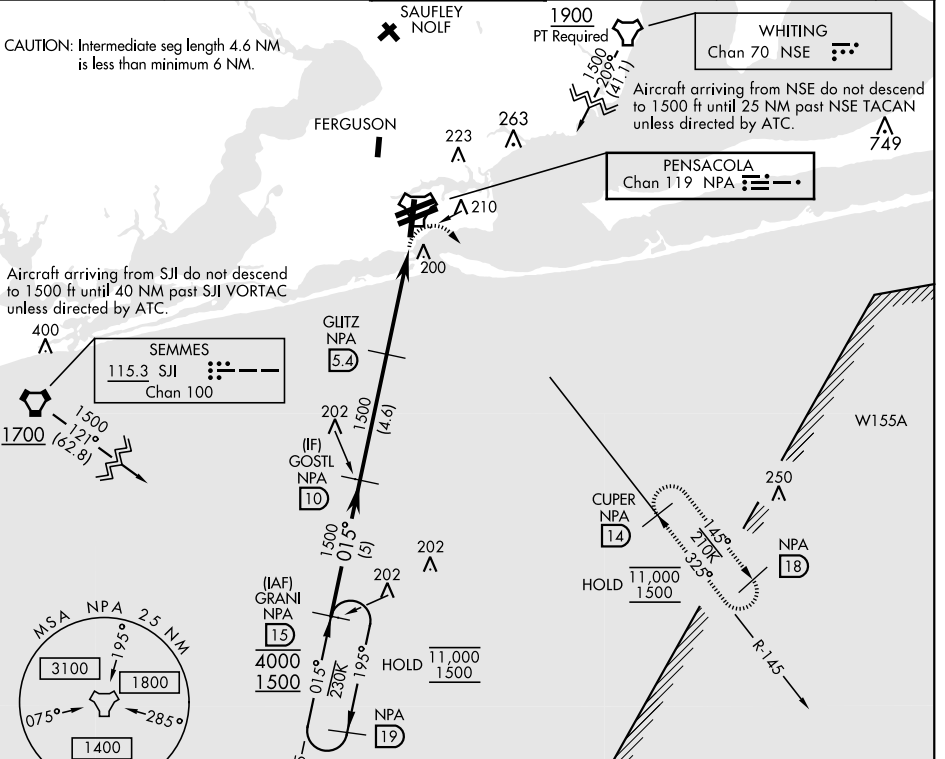
<b>ATIS</b> <b>124.35 266.8</b>		<b>PENSACOLA APP CON</b> <b>120.65 270.8</b>	<b>SHERMAN TOWER</b> <b>120.7 340.2</b>	<b>GND CON</b> <b>121.7 336.4</b>	<b>CLNC DEL</b> <b>134.1 268.7</b>	<b>ASR/PAR</b>
------------------------------------	--	---	--	--------------------------------------	---------------------------------------	----------------

MISSED APPROACH: Climbing right turn to 1500 via NPA TACAN R-145 to CUPER and hold.

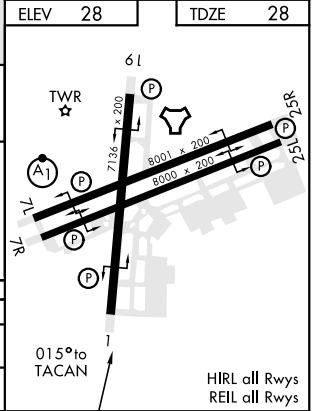
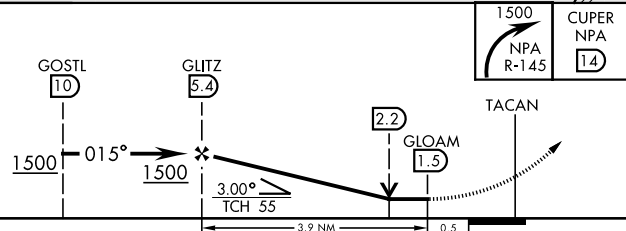
CAUTION: Intermediate seg length 4.6 NM is less than minimum 6 NM.

Aircraft arriving from SJI do not descend to 1500 ft until 40 NM past SJI VORTAC unless directed by ATC.

Aircraft arriving from NSE do not descend to 1500 ft until 25 NM past NSE TACAN unless directed by ATC.



EMERG SAFE ALT 100 NM 3100



SE-3, 28 NOV 2024 to 26 DEC 2024

SE-3, 28 NOV 2024 to 26 DEC 2024

PENSACOLA, FLORIDA

30°21'N-87°19'W

PENSACOLA NAS (FORREST SHERMAN FLD) (KNPA)

Orig 02DEC21

# TACAN Y RWY 1