

PENSACOLA, FLORIDA

TACAN Y RWY 19

TACAN NPA Chan 119	APCH CRS 182°	Rwy ldg TDZE Arprt Elev 7136 22 28
------------------------------	-------------------------	---

AL-736 [USN]

PENSACOLA NAS (FORREST SHERMAN FLD) (KNPA)

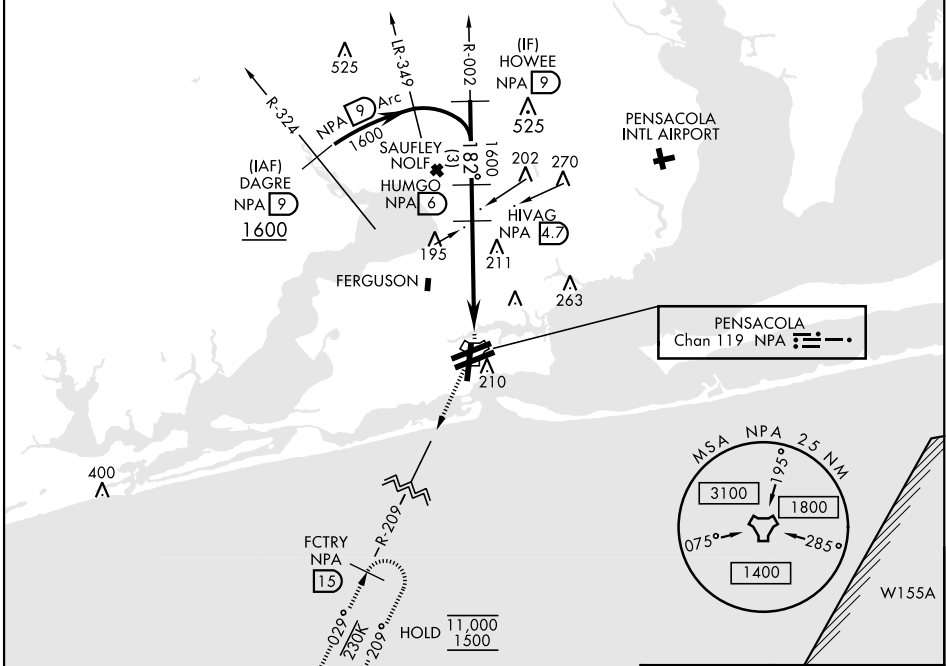
RADAR Required.

MISSED APPROACH: Climbing right turn to 1500 via NPA TACAN R-209 to FCTRY and hold.

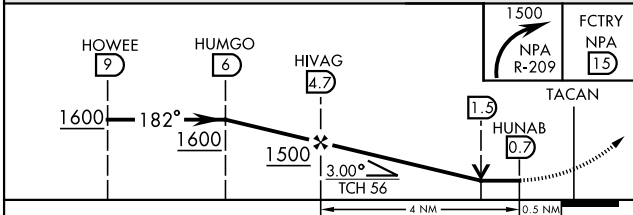
ATIS 124.35 266.8	PENSACOLA APP CON 120.65 270.8	SHERMAN TOWER 120.7 340.2	GND CON 121.7 336.4	CLNC DEL 134.1 268.7	ASR/ PAR
-----------------------------	--	-------------------------------------	-------------------------------	--------------------------------	-------------

CAUTION: Intermediate seg len 4.3 NM is less than minimum 6 NM.

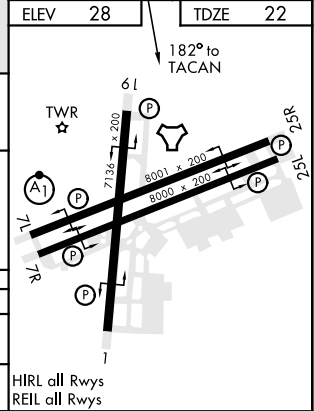
The final apch course is 427' from rwy centerline at 3000' from thld.



EMERG SAFE ALT 100 NM 3100



CATEGORY	A	B	C	D	E
S-19	500-1 478 (500-1)		500-1½ 478 (500-1½)		
CIRCLING	520-1 492 (500-1)		540-1½ 512 (600-1½)	580-2 552 (600-2)	



PENSACOLA, FLORIDA
Orig 02DEC21

30°21'N-87°19'W

PENSACOLA NAS (FORREST SHERMAN FLD) (KNPA)

TACAN Y RWY 19

SE-3, 28 NOV 2024 to 26 DEC 2024

SE-3, 28 NOV 2024 to 26 DEC 2024