

TACAN Y RWY 25R

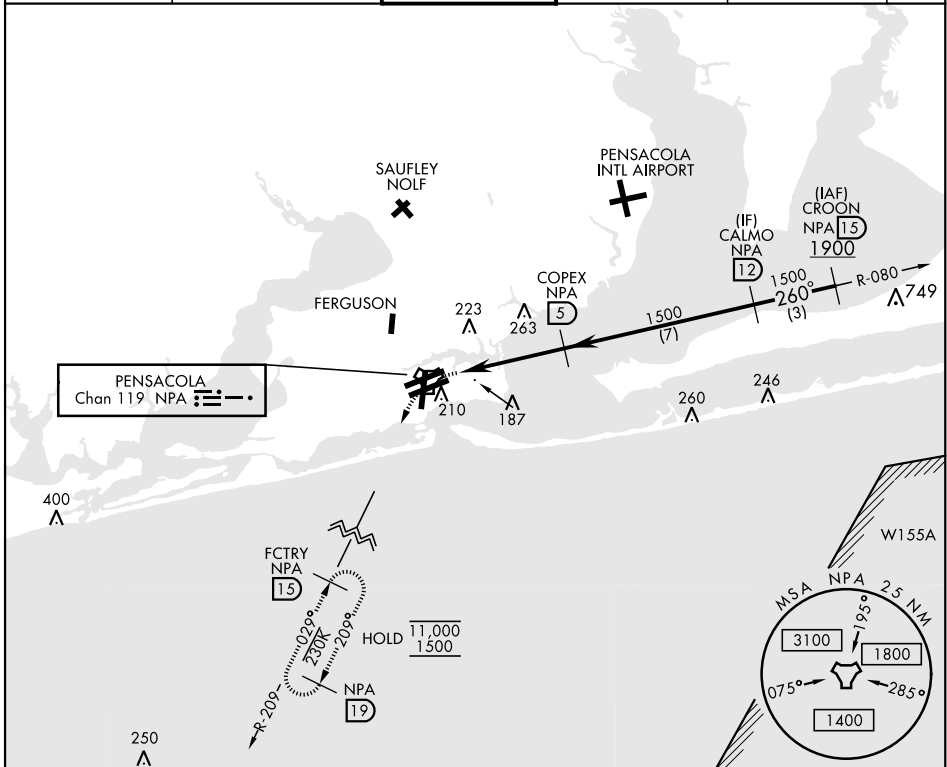
TACAN NPA Chan 119	APCH CRS 260°	Rwy Idg 8000	TDZE 22	Arprt Elev 28
-----------------------	------------------	-----------------	------------	------------------

AL-736 [USN]

PENSACOLA NAS (FORREST SHERMAN FLD) (KNPA)

RADAR required.	MISSED APPROACH: Climbing left turn to 1500 via NPA TACAN R-209 to FCTRY and hold.
-----------------	--

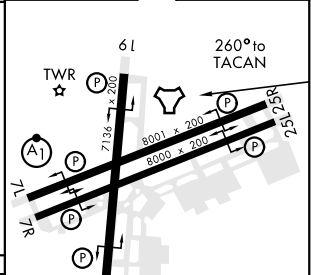
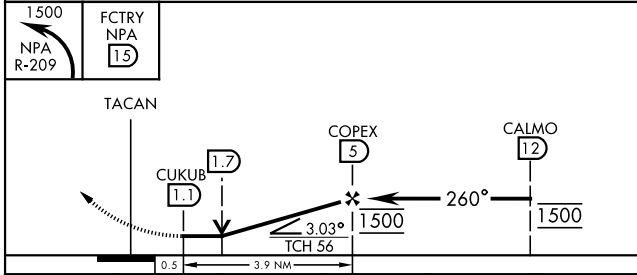
ATIS 124.35 266.8	PENSACOLA APP CON 120.65 270.8	SHERMAN TOWER 120.7 340.2	GND CON 121.7 336.4	CLNC DEL 134.1 268.7	ASR/PAR
----------------------	-----------------------------------	------------------------------	------------------------	-------------------------	---------



SE-3, 28 NOV 2024 to 26 DEC 2024

SE-3, 28 NOV 2024 to 26 DEC 2024

EMERG SAFE ALT 100 NM 3100	ELEV 28	TDZE 22
----------------------------	---------	---------



CATEGORY	A	B	C	D	E
S-25R	440-1 419 (500-1)		440-1½ 419 (500-1½)		
CIRCLING	520-1 492 (500-1)		540-1½ 512 (600-1½)	580-2 552 (600-2)	

HIRL all Rwys
REIL all Rwys

PENSACOLA, FLORIDA 30° 21' N - 87° 19' W PENSACOLA NAS (FORREST SHERMAN FLD) (KNPA)

Orig 02DEC21

TACAN Y RWY 25R