

PENSACOLA, FLORIDA

TACAN Y RWY 7L

TACAN NPA Chan 119	APCH CRS 064°	Rwy Idg TDZE Arprt Elev	8001 23 28
------------------------------	-------------------------	-------------------------------	---------------------------------------

AL-736 [USN]

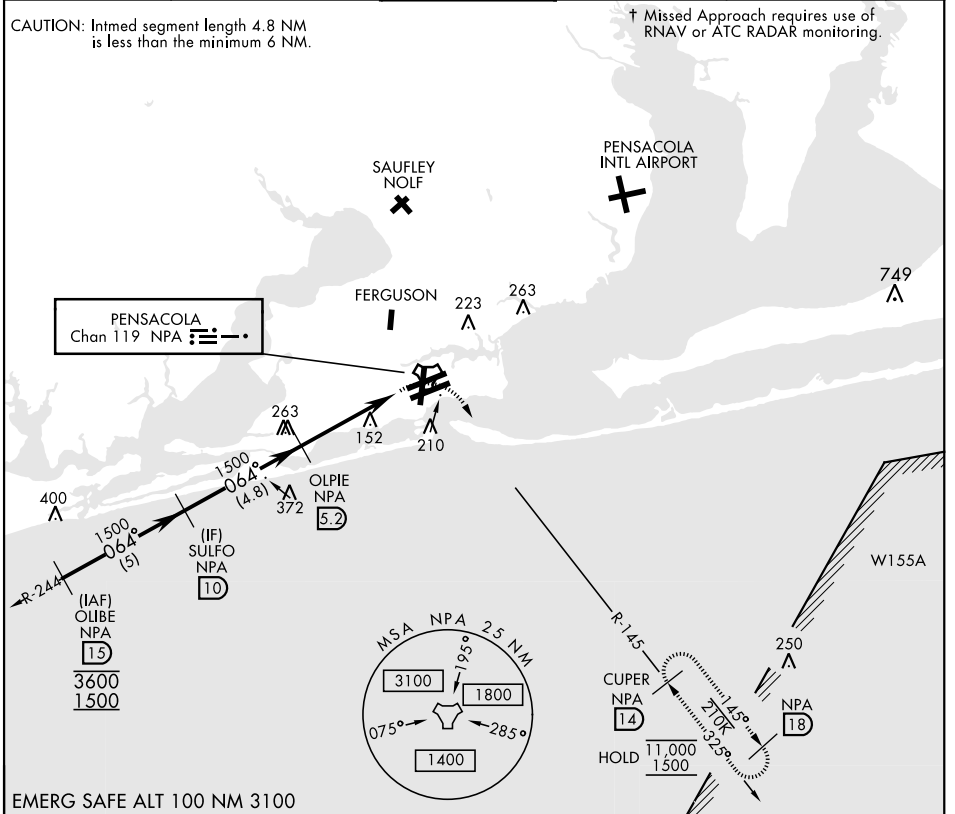
PENSACOLA NAS (FORREST SHERMAN FLD) (KNPA)

RADAR required.
 ▼ * When ALS inop, increase CAT AB vis to 1 mile, CAT CDE vis to 1 1/8 miles.



† MISSED APPROACH: Climbing right turn to 1500 via NPA TACAN R-145 to CUPER and hold.

ATIS 124.35 266.8	PENSACOLA APP CON 120.65 270.8	SHERMAN TOWER 120.7 340.2	GND CON 121.7 336.4	CLNC DEL 134.1 268.7	ASR/PAR
-----------------------------	--	-------------------------------------	-------------------------------	--------------------------------	---------



EMERG SAFE ALT 100 NM 3100

SULFO 10		OLPIE 5.2		TACAN		ELEV 28		TDZE 23	
1500		1500		1500		CUPER NPA 14			
064°		3.00°		3.9 NM		0.5			
CATEGORY	A	B	C	D	E				
S-7L *	440-1/2	417 (500-1/2)	440-3/4	417 (500-3/4)					
CIRCLING	520-1	492 (500-1)	540-1 1/2	512 (600-1 1/2)	580-2	552	(600-2)		

PENSACOLA, FLORIDA 30°21'N-87°19'W PENSACOLA NAS (FORREST SHERMAN FLD) (KNPA)

Orig 02DEC21

TACAN Y RWY 7L

SE-3, 28 NOV 2024 to 26 DEC 2024

SE-3, 28 NOV 2024 to 26 DEC 2024

