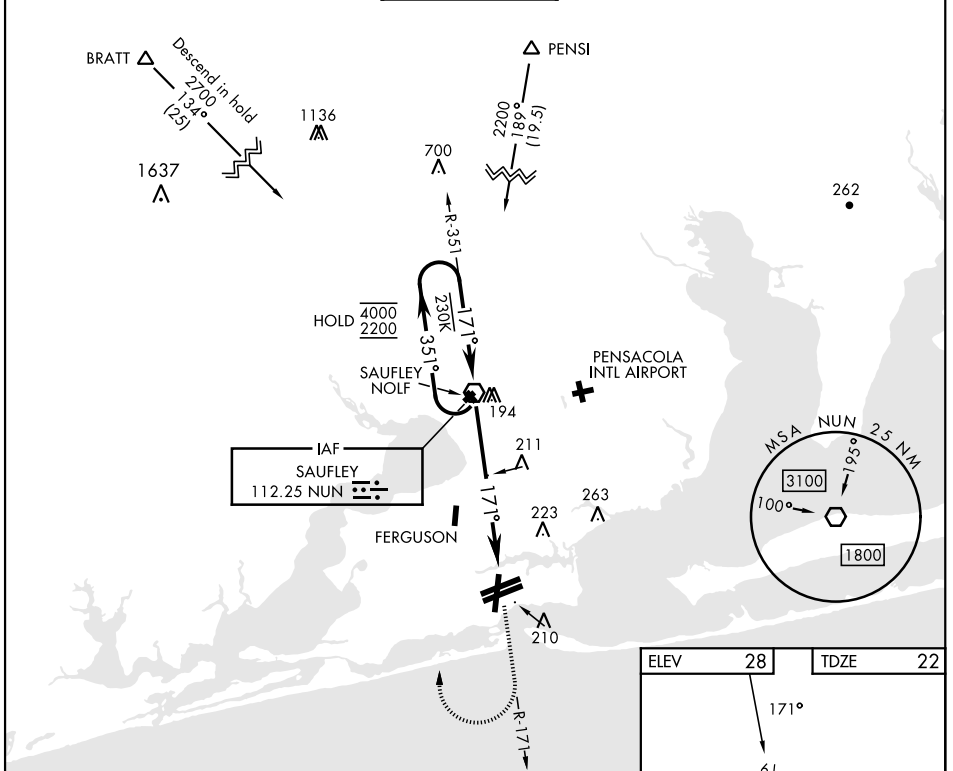


# VOR Y RWY 19

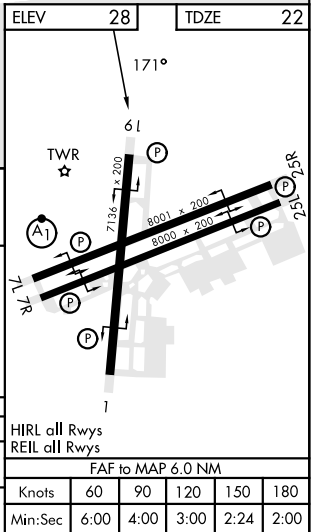
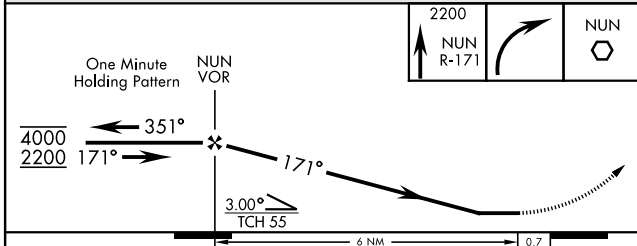
VOR NUN <b>112.25</b>	APCH CRS <b>171°</b>	Rwy Ldg TDZE Arprt Elev <b>7136</b> <b>22</b> <b>28</b>
--------------------------	-------------------------	--

[USN] PENSACOLA NAS (FORREST SHERMAN FLD) (KNPA)

		MISSED APPROACH: Climb to 2200 via NUN R-171. Then turn right direct NUN VOR and hold. Remain within 15 NM of NUN.			
ATIS <b>124.35 266.8</b>	PENSACOLA APP CON <b>120.65 270.8</b>	SHERMAN TOWER <b>120.7 340.2</b>	GND CON <b>121.7 336.4</b>	CLNC DEL <b>134.1 268.7</b>	ASR/ PAR



EMERG SAFE ALT 100 NM 3100



SE-3, 28 NOV 2024 to 26 DEC 2024

SE-3, 28 NOV 2024 to 26 DEC 2024