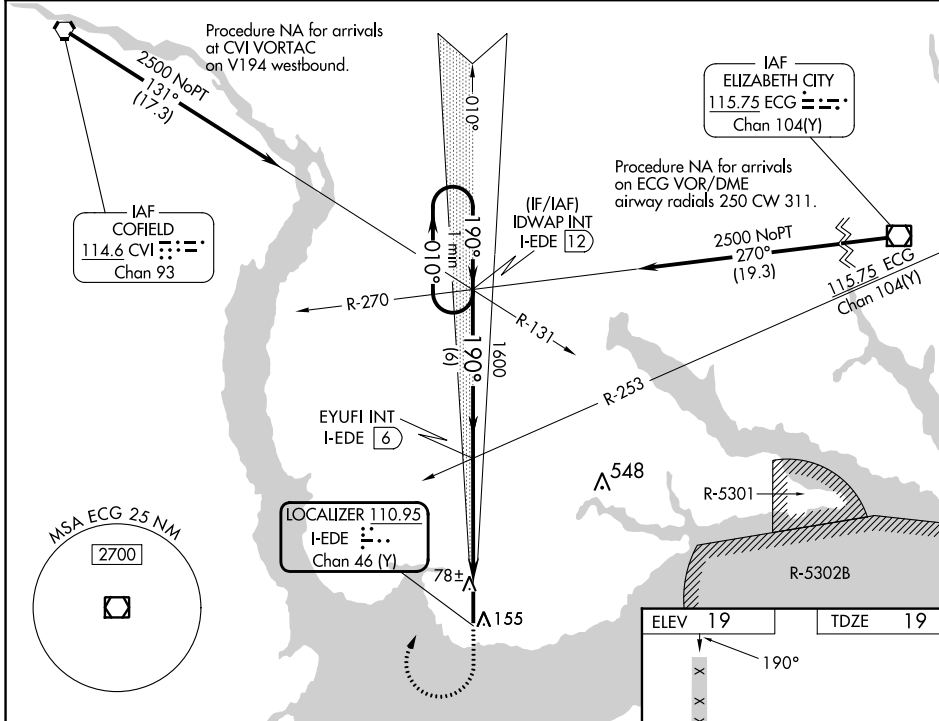


LOC/DME I-EDE 110.95 Chan 46(Y)	APP CRS 190°	Rwy Idg 6001 TDZE 19 Apt Elev 19
---	------------------------	---

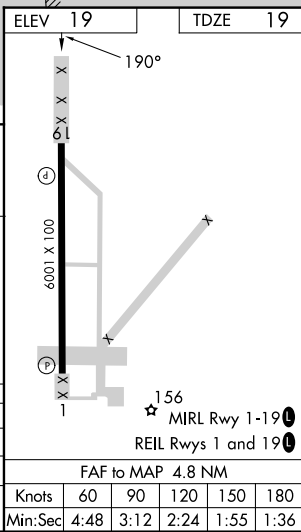
ILS or LOC RWY 19

NORTHEASTERN RGNL (E/D/E)

DME or RADAR required for procedure entry.		<p>▼ When local altimeter setting not received, use Elizabeth City altimeter setting: increase S-ILS 19 DA to 276 feet; increase all MDAs 60 feet and S-LOC 19 visibility Cat C/D 1/8 SM, and Circling visibility Cat C 1/4 SM. VDP NA when using Elizabeth City altimeter setting. Rwy 19 helicopter visibility reduction below 3/4 SM NA.</p>	<p>MISSED APPROACH: Climb to 600 then climbing right turn to 2500 on heading 030° and I-EDE localizer N course to IDWAP INT/I-EDE 12 DME and hold.</p>
AWOS-3 118.275	WASHINGTON CENTER 123.85 279.65		



<p>VGSI and ILS glidepath not coincident (VGSI Angle 3.00/TCH 48).</p> <p>One Minute Holding Pattern</p> <p>IDWAP INT I-EDE 12</p> <p>EYUFI INT I-EDE 6</p>		<p>600</p> <p>2500</p> <p>hdg 030°</p>	I-EDE N crs	IDWAP INT
<p>2500 ← 010°</p> <p>190° →</p> <p>GS 3.00° TCH 43</p>	<p>1600</p> <p>1600</p>	<p>I-EDE 2.5</p> <p>I-EDE 1.2</p>		
	<p>6 NM</p> <p>3.9 NM</p> <p>1.3 NM</p>			



EDENTON, NORTH CAROLINA	Orig-E 16MAY24	36°02'N-76°34'W	NORTHEASTERN RGNL (E/D/E)
-------------------------	----------------	-----------------	---------------------------

ILS or LOC RWY 19

SE-2, 28 NOV 2024 to 26 DEC 2024

SE-2, 28 NOV 2024 to 26 DEC 2024